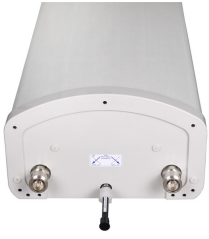


LRX-8512DS-VTM



2-port sector antenna, 2x 698–960 MHz, 85° HPBW, RET compatible

- Broadband, providing future-ready single antenna for application in 700 MHz and existing 850 MHz cellular operation
- Ideal solution for dense urban, suburban site applications
- Excellent solution for site sharing and maximizing capacity

OBSOLETE

This product was discontinued on: **March 30, 2024**

General Specifications

Antenna Type	Sector
Band	Single band
Color	Light Gray (RAL 7035)
Grounding Type	RF connector inner conductor and body grounded to reflector and mounting bracket
Performance Note	Outdoor usage Wind loading figures are validated by wind tunnel measurements described in white paper WP-112534-EN
Radome Material	Fiberglass, UV resistant
Radiator Material	Aluminum
RF Connector Interface	7-16 DIN Female
RF Connector Location	Bottom
RF Connector Quantity, high band	0
RF Connector Quantity, mid band	0
RF Connector Quantity, low band	2
RF Connector Quantity, total	2

Dimensions

Width	301 mm 11.85 in
Depth	181 mm 7.126 in
Length	1293 mm 50.906 in
Net Weight, without mounting kit	13.6 kg 29.983 lb

Electrical Specifications

LRX-8512DS-VTM

Impedance	50 ohm
Operating Frequency Band	698 – 960 MHz
Polarization	±45°

Electrical Specifications

Frequency Band, MHz	698–806	806–896	870–960
Gain, dBi	13.5	13.9	14
Beamwidth, Horizontal, degrees	85	85	85
Beamwidth, Vertical, degrees	16.8	15.3	14.4
Beam Tilt, degrees	0–15	0–15	0–15
USLS, typical, dB	16	15	15
Front-to-Back Ratio at 180°, dB	26	25	24
CPR at Boresight, dB	20	27	24
CPR at Sector, dB	13	11	10
Isolation, Cross Polarization, dB	30	30	30
VSWR Return loss, dB	1.4 15.6	1.4 15.6	1.5 14.0
PIM, 3rd Order, 2 x 20 W, dBc	-153	-153	-153
Input Power per Port, maximum, watts	400	400	400

Mechanical Specifications

Wind Loading @ Velocity, frontal	402.0 N @ 150 km/h (90.4 lbf @ 150 km/h)
Wind Loading @ Velocity, lateral	130.0 N @ 150 km/h (29.2 lbf @ 150 km/h)
Wind Loading @ Velocity, rear	472.0 N @ 150 km/h (106.1 lbf @ 150 km/h)
Wind Speed, maximum	241 km/h (150 mph)

Packaging and Weights

Width, packed	440 mm 17.323 in
Depth, packed	350 mm 13.78 in
Length, packed	1720 mm 67.717 in
Weight, gross	25.8 kg 56.879 lb

Regulatory Compliance/Certifications

Agency	Classification
CE	Compliant with the relevant CE product directives

LRX-8512DS-VTM

CHINA-ROHS	Below maximum concentration value
ISO 9001:2015	Designed, manufactured and/or distributed under this quality management system
REACH-SVHC	Compliant as per SVHC revision on www.andrew.com/ProductCompliance
ROHS	Compliant
UK-ROHS	Compliant



Included Products

- | | | |
|----------|---|--|
| BSAMNT-3 | - | Wide Profile Antenna Downtilt Mounting Kit for 2.4 - 4.5 in (60 - 115 mm) OD round members. Kit contains one scissor top bracket set and one bottom bracket set. |
|----------|---|--|

* Footnotes

Performance Note Severe environmental conditions may degrade optimum performance

BSAMNT-3



Wide Profile Antenna Downtilt Mounting Kit for 2.4 - 4.5 in (60 - 115 mm) OD round members. Kit contains one scissor top bracket set and one bottom bracket set.

Product Classification

Product Type Downtilt mounting kit

General Specifications

Application Outdoor

Color Silver

Dimensions

Compatible Diameter, maximum 115 mm | 4.528 in

Compatible Diameter, minimum 60 mm | 2.362 in

Weight, net 6.2 kg | 13.669 lb

Material Specifications

Material Type Galvanized steel

Packaging and Weights

Included Brackets | Hardware

Packaging quantity 1

Weight, gross 6.4 kg | 14.11 lb

Regulatory Compliance/Certifications

Agency	Classification
CE	Compliant with the relevant CE product directives
CHINA-ROHS	Below maximum concentration value
ISO 9001:2015	Designed, manufactured and/or distributed under this quality management system
REACH-SVHC	Compliant as per SVHC revision on www.andrew.com/ProductCompliance
ROHS	Compliant
UK-ROHS	Compliant

BSAMNT-3

