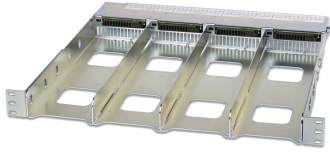


# PS-R-1

---



PowerShift® Rack, accommodates up to 4 modules (3 separate circuits each for a total capacity of 12 RRU's when all 4 modules are installed)

- Reduced capital/operating expenditures
- Engineering flexibility
- Future-ready design

## Product Classification

<b>Product Type</b>	Shelf
<b>Product Brand</b>	PowerShift®
<b>Product Series</b>	V1

## General Specifications

<b>Application</b>	Mounts PowerShift® modules
<b>Color</b>	Silver metallic
<b>Rack Type</b>	EIA 19 in
<b>Rack Units</b>	1
<b>Shelf Movement</b>	Fixed

## Dimensions

<b>Height</b>	44.45 mm   1.75 in
<b>Width</b>	482.6 mm   19 in
<b>Depth</b>	431.8 mm   17 in

## Electrical Specifications

<b>Electrical Safety Standard</b>	UL60950-UL/cUL with CB report
-----------------------------------	-------------------------------

## Packaging and Weights

<b>Packaging quantity</b>	1
<b>Weight, net</b>	4.536 kg   10 lb

## Regulatory Compliance/Certifications

<b>Agency</b>	<b>Classification</b>
CE	Compliant with the relevant CE product directives

# PS-R-1

---

CHINA-ROHS	Above maximum concentration value
ISO 9001:2015	Designed, manufactured and/or distributed under this quality management system
REACH-SVHC	Compliant as per SVHC revision on <a href="http://www.andrew.com/ProductCompliance">www.andrew.com/ProductCompliance</a>
ROHS	Compliant/Exempted
UK-ROHS	Compliant/Exempted

