

R2V4PX308R



12-port sector antenna, 4x 698–960 and 8x 1710–2690 MHz, 65° HPBW, 6x RET with manual override. Bands cascaded SRET (Antenna 1 and Antenna 2).

OBSOLETE

This product was discontinued on: **March 30, 2022**

Replaced By:

RRV4-65B-R6H4-V2 12-port sector antenna, 4x 694–960 and 8x 1695-2690 MHz, 65° HPBW, 6x RET

General Specifications

Antenna Type	Sector
Band	Multiband
Grounding Type	RF connector inner conductor and body grounded to reflector and mounting bracket
Performance Note	Outdoor usage
Radome Material	ASA, UV stabilized
Radiator Material	Brass Low loss circuit board
Reflector Material	Aluminum
RF Connector Interface	7-16 DIN Female
RF Connector Location	Bottom
RF Connector Quantity, high band	8
RF Connector Quantity, low band	4
RF Connector Quantity, total	12

Remote Electrical Tilt (RET) Information

RET Interface	8-pin DIN Female 8-pin DIN Male
RET Interface, quantity	2 female 2 male
Input Voltage	10–30 Vdc

R2V4PX308R

Internal RET	High band (4) Low band (2)
Power Consumption, idle state, maximum	2 W
Power Consumption, normal conditions, maximum	13 W
Protocol	3GPP/AISG 2.0 (Single RET)

Dimensions

Width	641 mm 25.236 in
Depth	244 mm 9.606 in
Length	2074 mm 81.654 in
Net Weight, without mounting kit	60 kg 132.277 lb

Electrical Specifications

Impedance	50 ohm
Operating Frequency Band	1710 – 2690 MHz 698 – 960 MHz
Polarization	±45°

Electrical Specifications

Frequency Band, MHz	698–790	790–890	890–960	1710–1920	1920–2170	2300–2690
Gain, dBi	15.1	15.5	15.9	16.4	17.2	17.9
Beamwidth, Horizontal, degrees	65	62	59	62	58	59
Beamwidth, Vertical, degrees	12.3	11	9.9	10.4	9.2	7.4
Beam Tilt, degrees	0–10	0–10	0–10	0–10	0–10	0–10
USLS (First Lobe), dB	18	18	18	18	18	18
Front-to-Back Ratio at 180°, dB	33	33	32	32	33	37
CPR at Boresight, dB	23	19	18	23	21	14
CPR at Sector, dB	13	14	12	13	11	2
Isolation, Cross Polarization, dB	25	25	25	25	25	25
Isolation, Inter-band, dB	30	30	30	30	30	30
VSWR Return loss, dB	1.43 15.0	1.43 15.0	1.43 15.0	1.5 14.0	1.5 14.0	1.5 14.0
PIM, 3rd Order, 2 x 20 W, dBc	-150	-150	-150	-150	-150	-150
Input Power per Port, maximum, watts	300	300	300	250	250	250

R2V4PX308R

Electrical Specifications, BASTA

Frequency Band, MHz	698–790	790–890	890–960	1710–1920	1920–2170	2300–2690
Gain by all Beam Tilts, average, dBi	14.8	15.3	15.7	15.9	16.8	17.5
Gain by all Beam Tilts Tolerance, dB	±0.6	±0.3	±0.3	±0.6	±0.5	±0.6
Gain by Beam Tilt, average, dBi	0° 14.8 5° 14.8 10° 14.7	0° 15.3 5° 15.3 10° 15.3	0° 15.7 5° 15.7 10° 15.6	0° 16.0 5° 15.9 10° 15.9	0° 16.9 5° 16.8 10° 16.6	0° 17.6 5° 17.6 10° 17.2
Beamwidth, Horizontal Tolerance, degrees	±2.4	±2.6	±2.5	±3	±2.4	±5.7
Beamwidth, Vertical Tolerance, degrees	±0.8	±0.6	±0.3	±0.8	±0.7	±0.7
USLS, beampeak to 20° above beampeak, dB	18	18	18	18	18	18
Front-to-Back Total Power at 180° ± 30°, dB	26	26	25	30	30	31
CPR at Boresight, dB	23	19	18	23	21	13
CPR at Sector, dB	13	14	12	13	11	2

Mechanical Specifications

Wind Loading @ Velocity, frontal	1,673.0 N @ 150 km/h (376.1 lbf @ 150 km/h)
Wind Loading @ Velocity, lateral	374.0 N @ 150 km/h (84.1 lbf @ 150 km/h)
Wind Loading @ Velocity, rear	1,764.0 N @ 150 km/h (396.6 lbf @ 150 km/h)
Wind Speed, maximum	250 km/h (155 mph)

Packaging and Weights

Width, packed	739 mm 29.095 in
Depth, packed	371 mm 14.606 in
Length, packed	2280 mm 89.764 in
Weight, gross	83 kg 182.983 lb

Regulatory Compliance/Certifications

Agency	Classification
CE	Compliant with the relevant CE product directives
CHINA-ROHS	Above maximum concentration value
ISO 9001:2015	Designed, manufactured and/or distributed under this quality management system
REACH-SVHC	Compliant as per SVHC revision on www.commscope.com/ProductCompliance

R2V4PX308R

ROHS Compliant/Exempted

UK-ROHS Compliant/Exempted



Included Products

- | | | |
|--------------|---|--|
| ATCB-B01-C50 | - | AISG RET Control Cable, 0.5 m |
| T-029-GL-E | - | Adjustable Tilt Pipe Mounting Kit for 2.362"-4.5" (60-115mm) OD round members for panel antennas. Includes 2 clamp sets. |

* Footnotes

Performance Note Severe environmental conditions may degrade optimum performance

ATCB-B01-C50



AISG RET Control Cable, 0.5 m

- Feeds data and power to RET system components
- AISG and RoHS compliant

Product Classification

Product Type AISG standard cable

General Specifications

AISG Connector A 8-pin DIN Female

AISG Connector A Body Style Straight

AISG Connector A Standard IEC 60130-9

AISG Connector B 8-pin DIN Male

AISG Connector B Body Style Straight

AISG Connector B Standard IEC 60130-9

Color Black

Data Conductor Type 0.24 mm² (24 AWG) twisted pair

EU Certification CB | CE

Power Conductor Type 0.82 mm² (18 AWG) stranded

Total Conductors, quantity 6

Dimensions

Length 0.5 m | 1.64 ft

Diameter Over Jacket 8 mm | 0.315 in

Electrical Specifications

Protocol AISG 1.1 | AISG 2.0

Voltage, maximum 300 V

Environmental Specifications

Operating Temperature -40 °C to +70 °C (-40 °F to +158 °F)

Relative Humidity Up to 100%

ATCB-B01-C50

Climatic Sequence Test Method	IEC 60068-2-14
Cold Exposure Test Method	IEC 60068-2-1
Damp Heat Exposure Test Method	IEC 60068-2-30, Test Condition Db
Heat Exposure Test Method	IEC 60068-2-2
Ingress Protection Test Method	IEC 60529:2001, IP67
Rain Simulation Test Method	IEC 60068-2-18, Test Condition Ra, Method 1
UV Resistance Test Method	IEC 60068-2-5, Test Condition B

Packaging and Weights

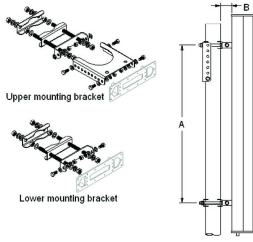
Weight, net 0.1 kg | 0.22 lb

Regulatory Compliance/Certifications

Agency	Classification
CE	Compliant with the relevant CE product directives
CHINA-ROHS	Below maximum concentration value
ISO 9001:2015	Designed, manufactured and/or distributed under this quality management system
REACH-SVHC	Compliant as per SVHC revision on www.commscope.com/ProductCompliance
ROHS	Compliant
UK-ROHS	Compliant



T-029-GL-E



Adjustable Tilt Pipe Mounting Kit for 2.362"-4.5" (60-115mm) OD round members for panel antennas. Includes 2 clamp sets.

Product Classification

Product Type Adjustable tilt mounting kit

General Specifications

Application Outdoor

Color Silver

Dimensions

Compatible Length, maximum 2850 mm | 112.205 in

Compatible Length, minimum 1500 mm | 59.055 in

Compatible Diameter, maximum 115 mm | 4.528 in

Compatible Diameter, minimum 60 mm | 2.362 in

Antenna-to-Pipe Distance 85 mm | 3.346 in

Bracket-to-Bracket Distance 1400 mm | 55.118 in

Weight, net 6 kg | 13.228 lb

Material Specifications

Material Type Galvanized steel

Mechanical Specifications

Mechanical Tilt 0°-8°

Packaging and Weights

Included Brackets | Hardware

Packaging quantity 1

Regulatory Compliance/Certifications

Agency	Classification
CE	Compliant with the relevant CE product directives

T-029-GL-E

CHINA-ROHS	Below maximum concentration value
ISO 9001:2015	Designed, manufactured and/or distributed under this quality management system
REACH-SVHC	Compliant as per SVHC revision on www.commscope.com/ProductCompliance
ROHS	Compliant
UK-ROHS	Compliant

