

RRZZVV-65A-R6H4



12-port sector antenna, 4x 694–960, 4x 1427–2690 and 4x 1695–2690 MHz, 65° HPBW, 6x RET

- All Internal RET actuators are connected in “Cascaded SRET” configuration
- Supports re-configurable antenna sharing capability enabling control of the internal RET system using up to two separate RET compatible OEM radios

OBSOLETE

This product was discontinued on: November 30, 2023

Replaced By:

RRV4-65A-R6-V2

12-port sector antenna, 4x 694–960 and 8x 1695–2690 MHz, 65° HPBW, 6x RET

General Specifications

Antenna Type	Sector
Band	Multiband
Grounding Type	RF connector inner conductor and body grounded to reflector and mounting bracket
Performance Note	Outdoor usage Wind loading figures are validated by wind tunnel measurements described in white paper WP-112534-EN
Radome Material	Fiberglass, UV resistant
Radiator Material	Aluminum Low loss circuit board
Reflector Material	Aluminum
RF Connector Interface	4.3-10 Female
RF Connector Location	Bottom
RF Connector Quantity, high band	8
RF Connector Quantity, low band	4
RF Connector Quantity, total	12

Remote Electrical Tilt (RET) Information

RET Hardware	CommRET v2
RET Interface	8-pin DIN Female 8-pin DIN Male
RET Interface, quantity	2 female 2 male
Input Voltage	10–30 Vdc

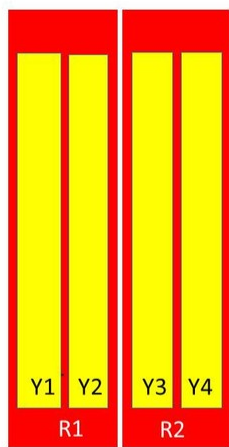
RRZZVV-65A-R6H4

Internal RET	High band (4) Low band (2)
Power Consumption, idle state, maximum	1 W
Power Consumption, normal conditions, maximum	8 W
Protocol	3GPP/AISG 2.0 (Single RET)

Dimensions

Width	498 mm 19.606 in
Depth	197 mm 7.756 in
Length	1499 mm 59.016 in
Net Weight, without mounting kit	31.8 kg 70.107 lb

Array Layout



Array	Freq (MHz)	Conns	RET (SRET)	AISG RET UID
R1	694-960	1-2	1	CPxxxxxxxxxxxxxxxxR1
R2	694-960	3-4	2	CPxxxxxxxxxxxxxxxxR2
Y1	1695-2690	5-6	3	CPxxxxxxxxxxxxxxxxY1
Y2	1427-2690	7-8	4	CPxxxxxxxxxxxxxxxxY2
Y3	1427-2690	9-10	5	CPxxxxxxxxxxxxxxxxY3
Y4	1695-2690	11-12	6	CPxxxxxxxxxxxxxxxxY4

Left Bottom Right

(Sizes of colored boxes are not true depictions of array sizes)

Electrical Specifications

Impedance	50 ohm
Operating Frequency Band	1427 – 2690 MHz 1695 – 2690 MHz 694 – 960 MHz
Polarization	±45°
Total Input Power, maximum	1,800 W @ 50 °C

Electrical Specifications

	R1&R2	R1&R2	R1&R2	Y1&Y4	Y1&Y4	Y2&Y3	Y2&Y3	Y2&Y3
Frequency Band, MHz	694–790	790–890	890–960	1695–2300	2300–2690	1427–1518	1695–2200	2200–2600

RRZZVV-65A-R6H4

Gain, dBi	13.2	13.3	13.5	18.1	18.6	15.2	17.3	18.2
Beamwidth, Horizontal, degrees	69	67	65	64	55	70	64	57
Beamwidth, Vertical, degrees	16.8	15.1	13.9	6.5	5.1	8.7	6.8	5.3
Beam Tilt, degrees	2-16	2-16	2-16	2-12	2-12	2-12	2-12	2-12
USLS (First Lobe), dB	17	16	16	20	17	17	15	17
Front-to-Back Ratio at 180°, dB	31	28	29	33	31	34	33	33
Isolation, Cross Polarization, dB	27	27	27	27	27	26	26	26
Isolation, Inter-band, dB	27	27	27	27	27	26	27	27
VSWR Return loss, dB	1.5 14.0	1.5 14.0	1.5 14.0	1.5 14.0	1.5 14.0	1.5 14.0	1.5 14.0	1.5 14.0
PIM, 3rd Order, 2 x 20 W, dBc	-153	-153	-153	-153	-153	-153	-153	-153
Input Power per Port at 50°C, maximum, watts	300	300	300	250	200	250	250	200

Electrical Specifications, BASTA

Frequency Band, MHz	694-790	790-890	890-960	1695-2300	2300-2690	1427-1518	1695-2200	2200-2600
Gain by all Beam Tilts, average, dBi	12.8	13	13.1	17.1	18.1	14.7	16.4	17.6
Gain by all Beam Tilts Tolerance, dB	±0.4	±0.5	±0.6	±1.2	±0.6	±0.5	±1	±0.7
Gain by Beam Tilt, average, dBi	2° 12.9 9° 12.8 16° 12.6	2° 13.2 9° 13.0 16° 12.6	2° 13.3 9° 13.1 16° 12.9	2° 16.8 7° 17.2 12° 16.9	2° 17.8 7° 18.4 12° 17.8	2° 14.5 7° 14.8 12° 14.7	2° 16.2 7° 16.5 12° 16.2	2° 17.2 7° 17.8 12° 17.3
Beamwidth, Horizontal Tolerance, degrees	±6.8	±6.4	±7.1	±10.3	±4.5	±8.6	±6.3	±7.9
Beamwidth, Vertical Tolerance, degrees	±1.2	±1.3	±1.2	±0.9	±0.4	±0.6	±0.8	±0.6
USLS, beampeak to 20° above beampeak, dB			15	15	14	14	15	17
Front-to-Back Total Power at 180° ± 30°, dB	20	22	22	26	25	25	26	28
CPR at Boresight, dB	22	19	18	19	20	15	20	19
CPR at Sector, dB	10	8	12	6	4	8	5	2

Mechanical Specifications

Effective Projective Area (EPA), frontal	0.52 m ² 5.597 ft ²
Effective Projective Area (EPA), lateral	0.17 m ² 1.83 ft ²
Mechanical Tilt Range	0°-15°

RRZZVV-65A-R6H4

Wind Loading @ Velocity, frontal	549.0 N @ 150 km/h (123.4 lbf @ 150 km/h)
Wind Loading @ Velocity, lateral	183.0 N @ 150 km/h (41.1 lbf @ 150 km/h)
Wind Loading @ Velocity, maximum	712.0 N @ 150 km/h (160.1 lbf @ 150 km/h)
Wind Loading @ Velocity, rear	452.0 N @ 150 km/h (101.6 lbf @ 150 km/h)
Wind Speed, maximum	241 km/h (150 mph)

Packaging and Weights

Width, packed	565 mm 22.244 in
Depth, packed	368 mm 14.488 in
Length, packed	1685 mm 66.339 in
Weight, gross	45 kg 99.208 lb

Regulatory Compliance/Certifications

Agency	Classification
CHINA-ROHS	Above maximum concentration value
ISO 9001:2015	Designed, manufactured and/or distributed under this quality management system
ROHS	Compliant/Exempted
UK-ROHS	Compliant/Exempted



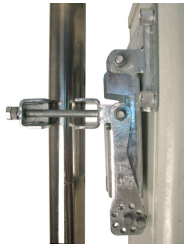
Included Products

BSAMNT-3	-	Wide Profile Antenna Downtilt Mounting Kit for 2.4 - 4.5 in (60 - 115 mm) OD round members. Kit contains one scissor top bracket set and one bottom bracket set.
----------	---	--

* Footnotes

Performance Note	Severe environmental conditions may degrade optimum performance
-------------------------	---

BSAMNT-3



Wide Profile Antenna Downtilt Mounting Kit for 2.4 - 4.5 in (60 - 115 mm) OD round members. Kit contains one scissor top bracket set and one bottom bracket set.

Product Classification

Product Type Downtilt mounting kit

General Specifications

Application Outdoor

Color Silver

Dimensions

Compatible Diameter, maximum 115 mm | 4.528 in

Compatible Diameter, minimum 60 mm | 2.362 in

Weight, net 6.2 kg | 13.669 lb

Material Specifications

Material Type Galvanized steel

Packaging and Weights

Included Brackets | Hardware

Packaging quantity 1

Weight, gross 6.4 kg | 14.11 lb

Regulatory Compliance/Certifications

Agency	Classification
CE	Compliant with the relevant CE product directives
CHINA-ROHS	Below maximum concentration value
ISO 9001:2015	Designed, manufactured and/or distributed under this quality management system
REACH-SVHC	Compliant as per SVHC revision on www.commscope.com/ProductCompliance
ROHS	Compliant
UK-ROHS	Compliant

BSAMNT-3

