

RV4-65D-R5-V9



10-port sector antenna, 2x 694–960 and 8x 1695–2690 MHz, 65° HPBW, 5x RET with tilt indicators

- All Internal RET actuators are connected in “Cascaded SRET” configuration
- Supports re-configurable antenna sharing capability enabling control of the internal RET system using up to two separate RET compatible OEM radios

OBSOLETE

This product was discontinued on: November 30, 2023

General Specifications

Antenna Type	Sector
Band	Multiband
Grounding Type	RF connector inner conductor and body grounded to reflector and mounting bracket
Performance Note	Outdoor usage Wind loading figures are validated by wind tunnel measurements described in white paper WP-112534-EN
Radome Material	Fiberglass, UV resistant
Radiator Material	Low loss circuit board
Reflector Material	Aluminum
RF Connector Interface	7-16 DIN Female
RF Connector Location	Bottom
RF Connector Quantity, high band	8
RF Connector Quantity, low band	2
RF Connector Quantity, total	10

Remote Electrical Tilt (RET) Information

RET Hardware	CommRET v2
RET Interface	8-pin DIN Female 8-pin DIN Male
RET Interface, quantity	2 female 2 male
Input Voltage	10–30 Vdc
Power Consumption, idle state, maximum	1 W
Power Consumption, normal conditions, maximum	8 W

RV4-65D-R5-V9

Protocol 3GPP/AISG 2.0 (Single RET)

Dimensions

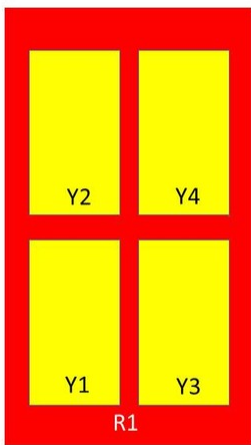
Width 350 mm | 13.78 in

Depth 208 mm | 8.189 in

Length 2688 mm | 105.827 in

Net Weight, without mounting kit 31.8 kg | 70.107 lb

Array Layout



Array	Freq (MHz)	Conns	RET (SRET)	AISG RET UID
R1	694-960	1-2	1	CPxxxxxxxxxxxxxxxxR1
Y1	1695-2690	3-4	2	CPxxxxxxxxxxxxxxxxY1
Y2	1695-2690	5-6	3	CPxxxxxxxxxxxxxxxxY2
Y3	1695-2690	7-8	4	CPxxxxxxxxxxxxxxxxY3
Y4	1695-2690	9-10	5	CPxxxxxxxxxxxxxxxxY4

Left Right
Bottom

(Sizes of colored boxes are not true depictions of array sizes)

Port Configuration

RV4-65D-R5-V9



Electrical Specifications

Impedance	50 ohm
Operating Frequency Band	1695 – 2690 MHz 694 – 960 MHz
Polarization	±45°
Total Input Power, maximum	800 W @ 50 °C

Electrical Specifications

Frequency Band, MHz	694–790	790–890	890–960	1695–1880	1920–2200	2300–2500	2500–2690
Gain, dBi	16.3	16.7	16.9	16.9	17.5	17.6	17.1
Beamwidth, Horizontal, degrees	70	68	67	62	61	61	62
Beamwidth, Vertical, degrees	8.2	7.4	6.8	7.4	6.4	5.6	5.2
Beam Tilt, degrees	0–10	0–10	0–10	2–12	2–12	2–12	2–12
USLS (First Lobe), dB	18	24	19	16	17	16	17
Front-to-Back Ratio at 180°, dB	26	30	32	33	38	35	32
Isolation, Cross Polarization, dB	28	28	28	25	25	25	25
Isolation, Inter-band, dB	28	28	28	28	28	28	28
VSWR Return loss, dB	1.5 14.0	1.5 14.0	1.5 14.0	1.5 14.0	1.5 14.0	1.5 14.0	1.5 14.0

RV4-65D-R5-V9

PIM, 3rd Order, 2 x 20 W, dBc	-150	-150	-150	-150	-150	-150	-150
Input Power per Port at 50°C, maximum, watts	250	250	250	200	200	200	200

Electrical Specifications, BASTA

Frequency Band, MHz	694–790	790–890	890–960	1695–1880	1920–2200	2300–2500	2500–2690
Gain by all Beam Tilts, average, dBi	16	16.5	16.6	16.3	17	16.9	16.6
Gain by all Beam Tilts Tolerance, dB	±0.3	±0.3	±0.4	±0.8	±0.6	±0.8	±0.7
Gain by Beam Tilt, average, dBi	0° 15.9 5° 16.1 10° 16.0	0° 16.3 5° 16.5 10° 16.5	0° 16.4 5° 16.8 10° 16.5	2° 16.2 7° 16.4 12° 16.2	2° 16.8 7° 17.1 12° 17.0	2° 16.7 7° 17.0 12° 16.7	2° 16.4 7° 16.8 12° 16.3
Beamwidth, Horizontal Tolerance, degrees	±1	±1.2	±1	±4.0	±2.2	±3.5	±4.1
Beamwidth, Vertical Tolerance, degrees	±0.5	±0.4	±0.4	±0.4	±0.4	±0.3	±0.2
USLS, beampeak to 20° above beampeak, dB	16	18	16	14	16	14	13
Front-to-Back Total Power at 180° ± 30°, dB	22	24	24	26	29	25	24
CPR at Boresight, dB	15	16	15	17	19	17	14
CPR at Sector, dB	10	10	11	10	9	10	9

Mechanical Specifications

Mechanical Tilt Range	0°–12°
Wind Loading @ Velocity, frontal	477.0 N @ 150 km/h (107.2 lbf @ 150 km/h)
Wind Loading @ Velocity, lateral	409.0 N @ 150 km/h (91.9 lbf @ 150 km/h)
Wind Loading @ Velocity, maximum	1,010.0 N @ 150 km/h (227.1 lbf @ 150 km/h)
Wind Loading @ Velocity, rear	506.0 N @ 150 km/h (113.8 lbf @ 150 km/h)
Wind Speed, maximum	241 km/h (150 mph)

Packaging and Weights

Width, packed	460 mm 18.11 in
Depth, packed	350 mm 13.78 in
Length, packed	2830 mm 111.417 in
Weight, gross	460 kg 1,014.125 lb

Regulatory Compliance/Certifications

RV4-65D-R5-V9

Agency

ISO 9001:2015

**Classification**

Designed, manufactured and/or distributed under this quality management system

Included Products

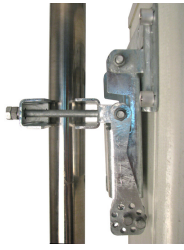
- BSAMNT-3 - Wide Profile Antenna Downtilt Mounting Kit for 2.4 - 4.5 in (60 - 115 mm) OD round members. Kit contains one scissor top bracket set and one bottom bracket set.

* Footnotes

Performance Note

Severe environmental conditions may degrade optimum performance

BSAMNT-3



Wide Profile Antenna Downtilt Mounting Kit for 2.4 - 4.5 in (60 - 115 mm) OD round members. Kit contains one scissor top bracket set and one bottom bracket set.

Product Classification

Product Type Downtilt mounting kit

General Specifications

Application Outdoor

Color Silver

Dimensions

Compatible Diameter, maximum 115 mm | 4.528 in

Compatible Diameter, minimum 60 mm | 2.362 in

Weight, net 6.2 kg | 13.669 lb

Material Specifications

Material Type Galvanized steel

Packaging and Weights

Included Brackets | Hardware

Packaging quantity 1

Weight, gross 6.4 kg | 14.11 lb

Regulatory Compliance/Certifications

Agency	Classification
CE	Compliant with the relevant CE product directives
CHINA-ROHS	Below maximum concentration value
ISO 9001:2015	Designed, manufactured and/or distributed under this quality management system
REACH-SVHC	Compliant as per SVHC revision on www.commscope.com/ProductCompliance
ROHS	Compliant
UK-ROHS	Compliant

BSAMNT-3

