

NNH4-65C-R6H4



12-port sector antenna, 4x 698–896 and 8x 1695–2360 MHz, 65° HPBW, 6x RET.

- Optimized for rooftop applications – Heavily suppressed lower sidelobes for elevation pattern
- Array configuration provides capability for 4T4R (4x MIMO) on Low band and High band
- Optimized SPR performance across all operating bands
- Excellent wind loading characteristics
- The antenna is supplied with mounting kits that provide 0 degree of mechanical downtilt; optional downtilt mounting kits are available

General Specifications

Antenna Type	Sector
Band	Multiband
Color	Light Gray (RAL 7035)
Grounding Type	RF connector inner conductor and body grounded to reflector and mounting bracket
Performance Note	Outdoor usage
Radome Material	Fiberglass, UV resistant
Radiator Material	Low loss circuit board
Reflector Material	Aluminum
RF Connector Interface	4.3-10 Female
RF Connector Location	Bottom
RF Connector Quantity, high band	8
RF Connector Quantity, low band	4
RF Connector Quantity, total	12

Remote Electrical Tilt (RET) Information

RET Hardware	CommRET v2
RET Interface	8-pin DIN Female 8-pin DIN Male
RET Interface, quantity	1 female 1 male
Input Voltage	10–30 Vdc
Internal RET	High band (8) Low band (4)
Power Consumption, active state, maximum	8 W
Power Consumption, idle state, maximum	1 W

NNH4-65C-R6H4

Protocol 3GPP/AISG 2.0 (Multi-RET)

Dimensions

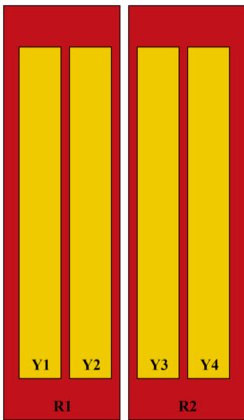
Width 498 mm | 19.606 in

Depth 197 mm | 7.756 in

Length 2438 mm | 95.984 in

Net Weight, antenna only 48.4 kg | 106.704 lb

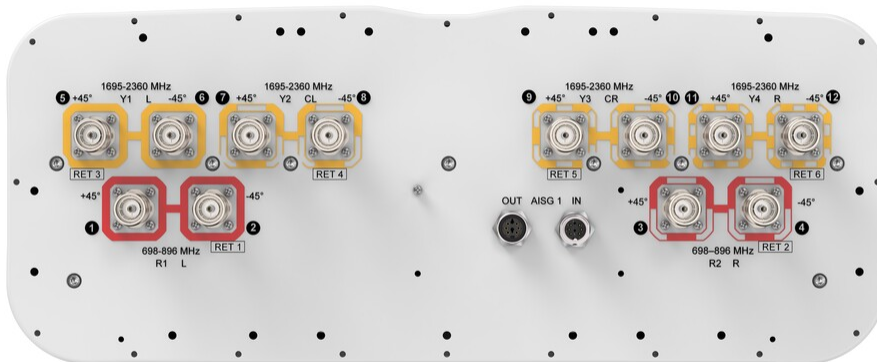
Array Layout



Array ID	Frequency (MHz)	RF Connector	RET (SRET)	AISG RET UID
R1	698-896	1 - 2	1	ANxxxxxxxxxxxxx1
R2	698-896	3 - 4	2	ANxxxxxxxxxxxxx2
Y1	1695-2360	5 - 6	3	ANxxxxxxxxxxxxx3
Y2	1695-2360	7 - 8	4	ANxxxxxxxxxxxxx4
Y3	1695-2360	9 - 10	5	ANxxxxxxxxxxxxx5
Y4	1695-2360	11 - 12	6	ANxxxxxxxxxxxxx6

(Sizes of colored boxes are not true depictions of array sizes)

Port Configuration



Electrical Specifications

Impedance 50 ohm

NNH4-65C-R6H4

Operating Frequency Band	1695 – 2360 MHz 698 – 896 MHz
Polarization	±45°
Total Input Power, maximum	900 W @ 50 °C

Electrical Specifications

	R1,R2	R1,R2	Y1,Y2,Y3,Y4	Y1,Y2,Y3,Y4	Y1,Y2,Y3,Y4	Y1,Y2,Y3,Y4
Frequency Band, MHz	698–806	806–896	1695–1880	1850–1990	1920–2180	2300–2360
RF Port	1-4	1-4	5-12	5-12	5-12	5-12
Gain, dBi	14.9	15.6	17.1	17.7	18.2	18.3
Beamwidth, Horizontal, degrees	71	65	69	67	63	58
Beamwidth, Vertical, degrees	11	9.2	5.6	5.2	5	4.5
Beam Tilt, degrees	0–10	0–10	0–10	0–10	0–10	0–10
USLS (First Lobe), dB	12	11	19	20	22	24
Front-to-Back Ratio at 180°, dB	31	30	35	35	36	35
Isolation, Cross Polarization, dB	25	25	25	25	25	25
Isolation, Inter-band, dB	25	25	25	25	25	25
VSWR Return loss, dB	1.5 14.0	1.5 14.0	1.5 14.0	1.5 14.0	1.5 14.0	1.5 14.0
PIM, 3rd Order, 2 x 20 W, dBc	-150	-150	-150	-150	-150	-150
Input Power per Port at 50°C, maximum, watts	300	300	300	250	250	200

Electrical Specifications, BASTA

Frequency Band, MHz	698–806	806–896	1695–1880	1850–1990	1920–2180	2300–2360
Gain by all Beam Tilts, average, dBi	14.5	15.3	16.7	17.2	17.7	17.9
Gain by all Beam Tilts Tolerance, dB	±0.6	±0.5	±0.6	±0.6	±0.6	±0.5
Beamwidth, Horizontal Tolerance, degrees	±7.4	±2.3	±7.9	±8.1	±6.3	±4.7
Beamwidth, Vertical Tolerance, degrees	±0.9	±0.6	±0.3	±0.2	±0.3	±0.1
USLS, beampeak to 20° above beampeak, dB	12	11	16	16	16	14
Front-to-Back Total Power at 180° ± 30°, dB	23	23	27	26	27	28

NNH4-65C-R6H4

CPR at Boresight, dB	21	23	20	21	20	18
CPR at Sector, dB	11	10	9	8	8	6

Mechanical Specifications

Wind Loading @ Velocity, frontal	954.0 N @ 150 km/h (214.5 lbf @ 150 km/h)
Wind Loading @ Velocity, lateral	331.0 N @ 150 km/h (74.4 lbf @ 150 km/h)
Wind Loading @ Velocity, maximum	1,235.0 N @ 150 km/h (277.6 lbf @ 150 km/h)
Wind Loading @ Velocity, rear	785.0 N @ 150 km/h (176.5 lbf @ 150 km/h)
Wind Speed, maximum	241 km/h (150 mph)

Packaging and Weights

Width, packed	565 mm 22.244 in
Depth, packed	309 mm 12.165 in
Length, packed	2625 mm 103.347 in
Weight, gross	63.1 kg 139.112 lb

Regulatory Compliance/Certifications

Agency	Classification
CHINA-ROHS	Above maximum concentration value
ISO 9001:2015	Designed, manufactured and/or distributed under this quality management system
ROHS	Compliant/Exempted
UK-ROHS	Compliant/Exempted



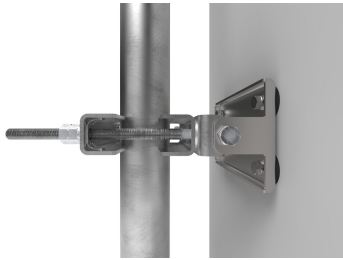
Included Products

BSAMNT-3F	-	Mounting bracket for cylindrical pipe installations (60-115mm pipe diameter) for fix mechanical tilt applications.
-----------	---	--

* Footnotes

Performance Note	Severe environmental conditions may degrade optimum performance
-------------------------	---

BSAMNT-3F



Mounting bracket for cylindrical pipe installations (60-115mm pipe diameter) for fix mechanical tilt applications.

Product Classification

Product Type Fixed tilt mounting kit

General Specifications

Application Outdoor

Color Silver

Dimensions

Compatible Diameter, maximum 115 mm | 4.528 in

Compatible Diameter, minimum 60 mm | 2.362 in

Weight, net 5.6 kg | 12.346 lb

Material Specifications

Material Type Galvanized steel

Packaging and Weights

Included Brackets | Hardware

Packaging quantity 1

Weight, gross 5.8 kg | 12.787 lb

Regulatory Compliance/Certifications

Agency	Classification
CE	Compliant with the relevant CE product directives
CHINA-ROHS	Below maximum concentration value
ISO 9001:2015	Designed, manufactured and/or distributed under this quality management system
REACH-SVHC	Compliant as per SVHC revision on www.commscope.com/ProductCompliance
ROHS	Compliant
UK-ROHS	Compliant

BSAMNT-3F

