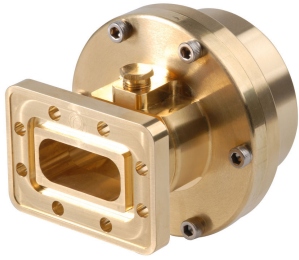


163SEM



Fixed-tuned PDR70 for elliptical waveguide 63

Product Classification

Product Type Elliptical waveguide connector

General Specifications

Attachment Method Tab-flare | Tool-flare

Body Style Straight, fixed-tuned

Inner Contact Plating Unplated

Interface PDR70

Outer Contact Plating Unplated

Pressurizable Yes

Dimensions

Width 85.852 mm | 3.38 in

Length 85.344 mm | 3.36 in

Transition Length 52.832 mm | 2.08 in

Waveguide Size WR137 | WG14 | R70

Electrical Specifications

Insertion Loss, typical 0.01 dB

Operating Frequency Band 5.725 – 7.125 GHz

Peak Power at Frequency, maximum 102.00 kW @ 6.78 GHz

Material Specifications

Material Type Brass

163SEM

Environmental Specifications

Operating Temperature -55 °C to +85 °C (-67 °F to +185 °F)

Storage Temperature -55 °C to +85 °C (-67 °F to +185 °F)

Packaging and Weights

Weight, net 1.7 kg | 3.748 lb

Regulatory Compliance/Certifications

Agency

Classification

CHINA-ROHS

Below maximum concentration value

ISO 9001:2015

Designed, manufactured and/or distributed under this quality management system

REACH-SVHC

Compliant as per SVHC revision on www.commscope.com/ProductCompliance

ROHS

Compliant

UK-ROHS

Compliant



* Footnotes

Insertion Loss, typical $0.05\sqrt{\text{freq}}$ (GHz) (not applicable for elliptical waveguide)