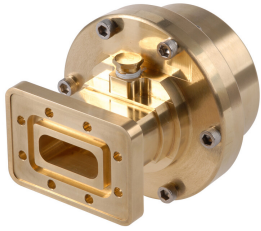


# 264SEM



Fixed-tuned PDR84 for elliptical waveguide 64

**OBSOLETE**

This product was discontinued on: January 2, 2024

## Product Classification

**Product Type** Elliptical waveguide connector

## General Specifications

**Attachment Method** Tab-flare | Tool-flare  
**Body Style** Straight, fixed-tuned  
**Inner Contact Plating** Unplated  
**Interface** PDR84  
**Outer Contact Plating** Unplated  
**Pressurizable** Yes

## Dimensions

**Width** 82.55 mm | 3.25 in  
**Length** 87.884 mm | 3.46 in  
**Transition Length** 55.118 mm | 2.17 in  
**Waveguide Size** WR112 | WG15 | R84

## Electrical Specifications

**Insertion Loss, typical** 0.01 dB  
**Operating Frequency Band** 7.125 – 7.75 GHz  
**Peak Power at Frequency, maximum** 60.00 kW @ 7.40 GHz

## Material Specifications

**Material Type** Brass

# 264SEM

---

## Environmental Specifications

**Operating Temperature** -55 °C to +85 °C (-67 °F to +185 °F)

**Storage Temperature** -55 °C to +85 °C (-67 °F to +185 °F)

## Packaging and Weights

**Weight, net** 1.4 kg | 3.086 lb

## Regulatory Compliance/Certifications

Agency	Classification
ISO 9001:2015	Designed, manufactured and/or distributed under this quality management system

## \* Footnotes

**Insertion Loss, typical**  $0.05\sqrt{\text{freq}}$  (GHz) (not applicable for elliptical waveguide)