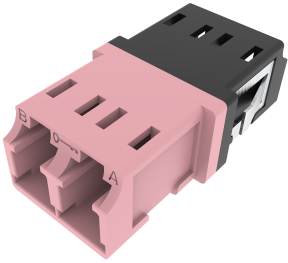


# 760158923 | KFA-LC02-KRO-HB

---



LazrSPEED®, OptiSPEED®, TeraSPEED® LC Duplex Keyed Hybrid Adapter, Rose/Black, Single Pack

## Product Classification

|                              |   |
|------------------------------|---|
| <b>Regional Availability</b> | Asia   Australia/New Zealand   EMEA   Latin America   North America |
| <b>Portfolio</b>             | CommScope®  |
| <b>Product Type</b>          | Fiber adapter   |
| <b>Product Brand</b>         | LazrSPEED®  |
| <b>Product Series</b>        | KFA   |

## General Specifications

|                               |                                       |
|-------------------------------|---------------------------------------|
| <b>Body Style</b>             | Duplex                                |
| <b>Color</b>                  | Black   Rose                          |
| <b>Interface</b>              | LC/UPC                                |
| <b>Interface Feature</b>      | Keyed                                 |
| <b>Mounting</b>               | No flange                             |
| <b>Shuttered</b>              | No                                    |
| <b>Total Ports, quantity</b>  | 2                                     |
| <b>Transmission Standards</b> | TIA/EIA-568-B.3   TIA/EIA-604 FOCIS-3 |

## Material Specifications

|                                  |          |
|----------------------------------|----------|
| <b>Alignment Sleeve Material</b> | Zirconia |
|----------------------------------|----------|

## Optical Specifications

|                   |                        |
|-------------------|------------------------|
| <b>Fiber Mode</b> | Multimode   Singlemode |
|-------------------|------------------------|

## Packaging and Weights

|                           |           |
|---------------------------|-----------|
| <b>Included</b>           | Dust caps |
| <b>Packaging quantity</b> | 1         |

## Regulatory Compliance/Certifications

| <b>Agency</b> | <b>Classification</b>  |
|---------------|--|
| CHINA-ROHS    | Below maximum concentration value  |
| ISO 9001:2015 | Designed, manufactured and/or distributed under this quality management system   |
| REACH-SVHC    | Compliant as per SVHC revision on <a href="http://www.commscope.com/ProductCompliance">www.commscope.com/ProductCompliance</a> |
| ROHS          | Compliant  |
| UK-ROHS       | Compliant  |

