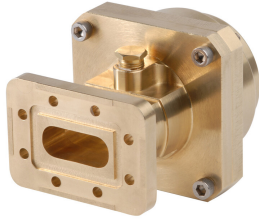


177SE



Fixed-tuned CPR112G for elliptical waveguide 77

Product Classification

Product Type Elliptical waveguide connector

General Specifications

Attachment Method Tab-flare | Tool-flare

Body Style Straight, fixed-tuned

Inner Contact Plating Unplated

Interface CPR112G

Outer Contact Plating Unplated

Pressurizable Yes

Dimensions

Width 88.392 mm | 3.48 in

Length 92.202 mm | 3.63 in

Transition Length 55.118 mm | 2.17 in

Waveguide Size WR112 | WG15 | R84

Electrical Specifications

Insertion Loss, typical 0.01 dB

Operating Frequency Band 7.125 – 8.5 GHz

Peak Power at Frequency, maximum 63.00 kW @ 7.80 GHz

Material Specifications

Material Type Brass

Environmental Specifications

Operating Temperature -55 °C to +85 °C (-67 °F to +185 °F)

Storage Temperature -55 °C to +85 °C (-67 °F to +185 °F)

177SE

Packaging and Weights

Weight, net 1.4 kg | 3.086 lb

Regulatory Compliance/Certifications

Agency	Classification
CHINA-ROHS	Below maximum concentration value
ISO 9001:2015	Designed, manufactured and/or distributed under this quality management system
REACH-SVHC	Compliant as per SVHC revision on www.andrew.com/ProductCompliance
ROHS	Compliant
UK-ROHS	Compliant



* Footnotes

Insertion Loss, typical 0.05√freq (GHz) (not applicable for elliptical waveguide)