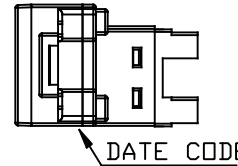
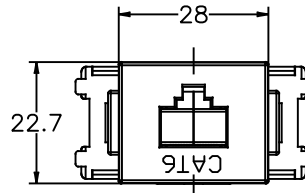
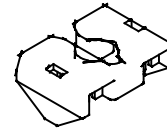
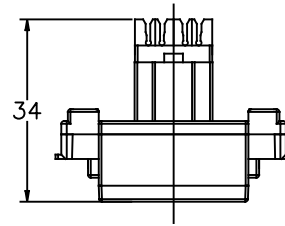


REVISIONS					
P	LTR	DESCRIPTION	DATE	DWN	APVD
	C	40052516CMO	20OCT2017	LS	CC



THIS DRAWING IS UNPUBLISHED.

RELEASED FOR PUBLICATION

© 2016 CommScope, INC. Confidential

NOTE: These drawings and specifications are the proprietary property of COMMSCOPE, INC. and may be used only for the specific purpose authorized in writing by COMMSCOPE, INC.

NOTE

- MATERIAL: SHUTTERED JACK HOUSING - PDM UL94HB
 JACK CONTACTS - BERYLIUM COPPER
 IDC TERMINALS - PHOSPHOROUS BRONZE
 110 BLOCK - POLYCARBONATE
 STRAIN RELIEF - POLYCARBONATE
- WIRE SIZE - 22-24 AWG SOLID OR 24-26 AWG STRANDED OF COPPER CONDUCTOR
 MAXIMUM INSULATION DIAMETER - 1.27 [0.050]
- DURABILITY: JACK CONTACT - 750 CYCLES
 IDC TERMINAL - 500 CYCLES
 HINGED SHUTTER - 2000 CYCLES
- WEIGHT: JACK - 13g, STRAIN RELIEF - 1g
- STRAIN RELIEF - 1 pc

GRAY	1554784-9
WHITE	1554784-8
YELLOW	1554784-7
ORANGE	1554784-6
GREEN	1554784-5
BLUE	1554784-4
RED	1554784-3
BLACK	1554784-2
OFF WHITE	1554784-1
COLOR	P/N

PARTS LIST

DIMENSIONS: MM	DWN	K LEE	18MAR2010	MATERIAL	-	FINISH	-
	CHK	A YUSHIRO	18MAR2010	COMMSCOPE, INC.			
TOLERANCES UNLESS OTHERWISE SPECIFIED:	APVD	K KUROSE	18MAR2010				
0 PLC ± -	PRODUCT SPEC			NAME CAT6 SHUTTERED JACK FOR JIS FACE PLATE			
1 PLC ± -	-						
2 PLC ± -	APPLICATION SPEC			SIZE CAGE CODE DRAWING NO RESTRICTED TO			
3 PLC ± -	-						
4 PLC ± -	WEIGHT			SCALE SHEET OF REV			
ANGLES ± -	-						
CUSTOMER DRAWING							

