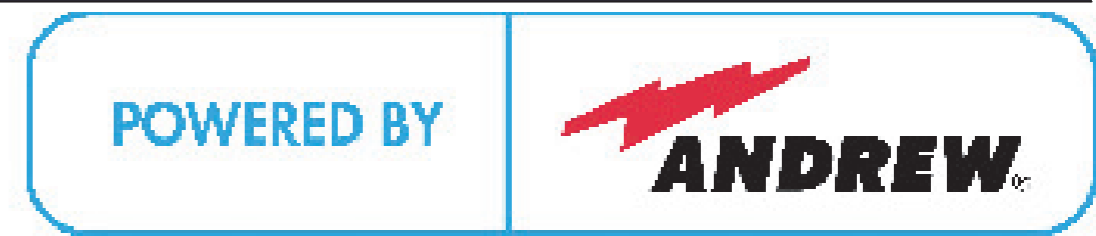


## Fixed Tilt Pipe Mounting Kit 600899F



Bulletin 639551 • Revision E • January 2014 • Page 1 of 2

CommScope Infrastructure Academy offers installation training.

### GENERAL INFORMATION

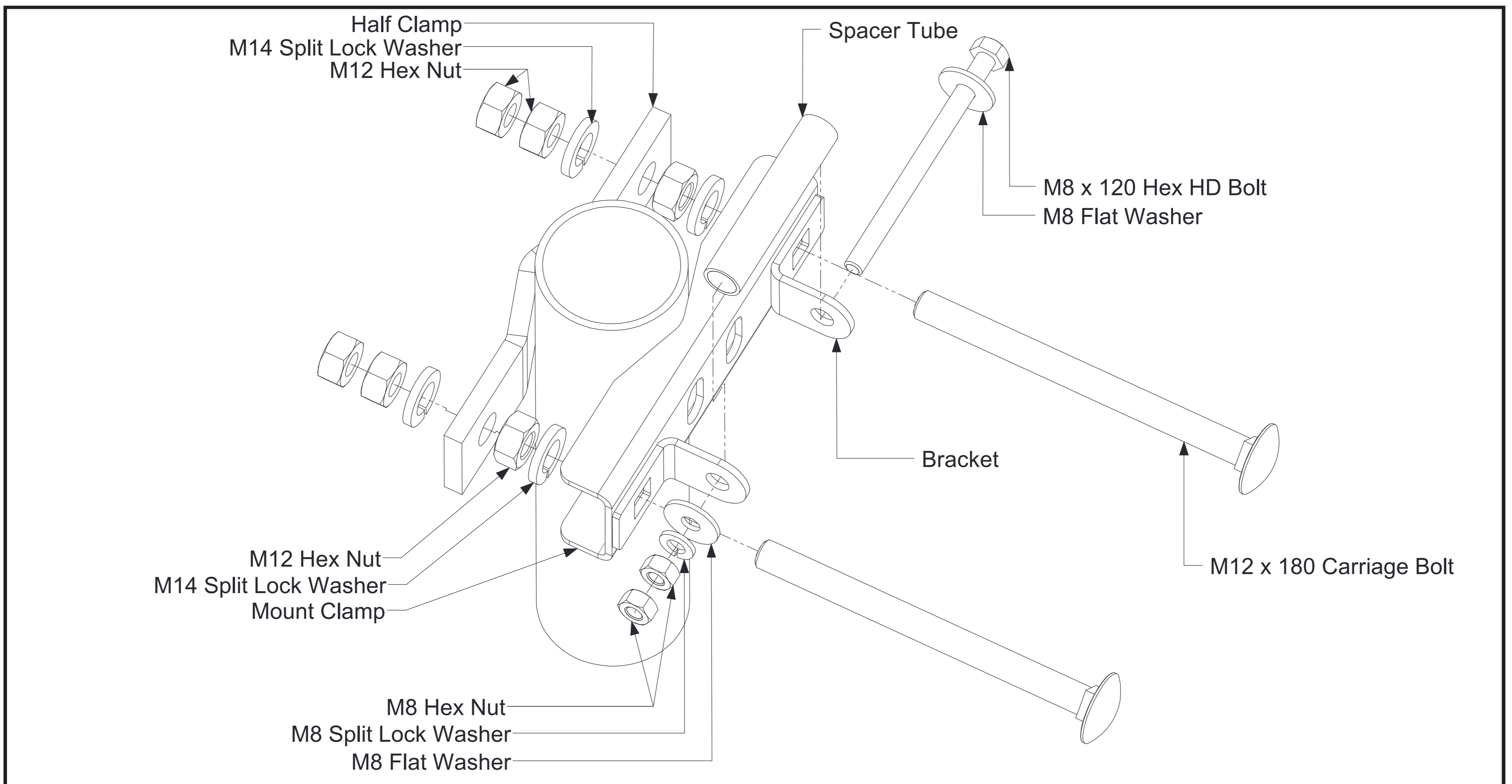
- Consists of 2 clamps for antennas with 2 mounting brackets.
- Fits round members 75 to 115 mm OD.

Tighten all hardware.

Torque	
M8	M12
15 N-m	58 N-m

### PRE-INSTALLATION INSTRUCTIONS

- Examine antenna and hardware to ensure that all parts are enclosed and that there is no physical damage.
- Check to ensure that the antenna feed connector mates with the jumper cable.
- Verify that the frequency range shown on the label on the back of the antenna matches the frequency range of the station equipment.
- Position the antenna with its “up” arrow label pointing upward before installation. This orientation allows the drain holes to be on the bottom of the antenna.



600899F Pipe Mount Clamp.

(continued on page 2)

### **NOTICE**

The installation, maintenance, or removal of an antenna requires qualified, experienced personnel. CommScope installation instructions are written for such installation personnel. Antenna systems should be inspected once a year by qualified personnel to verify proper installation, maintenance, and condition of equipment.

CommScope disclaims any liability or responsibility for the results of improper or unsafe installation practices.



Do not install near power lines. Power lines, telephone lines, and guy wires look the same. Assume any wire or line can electrocute you.

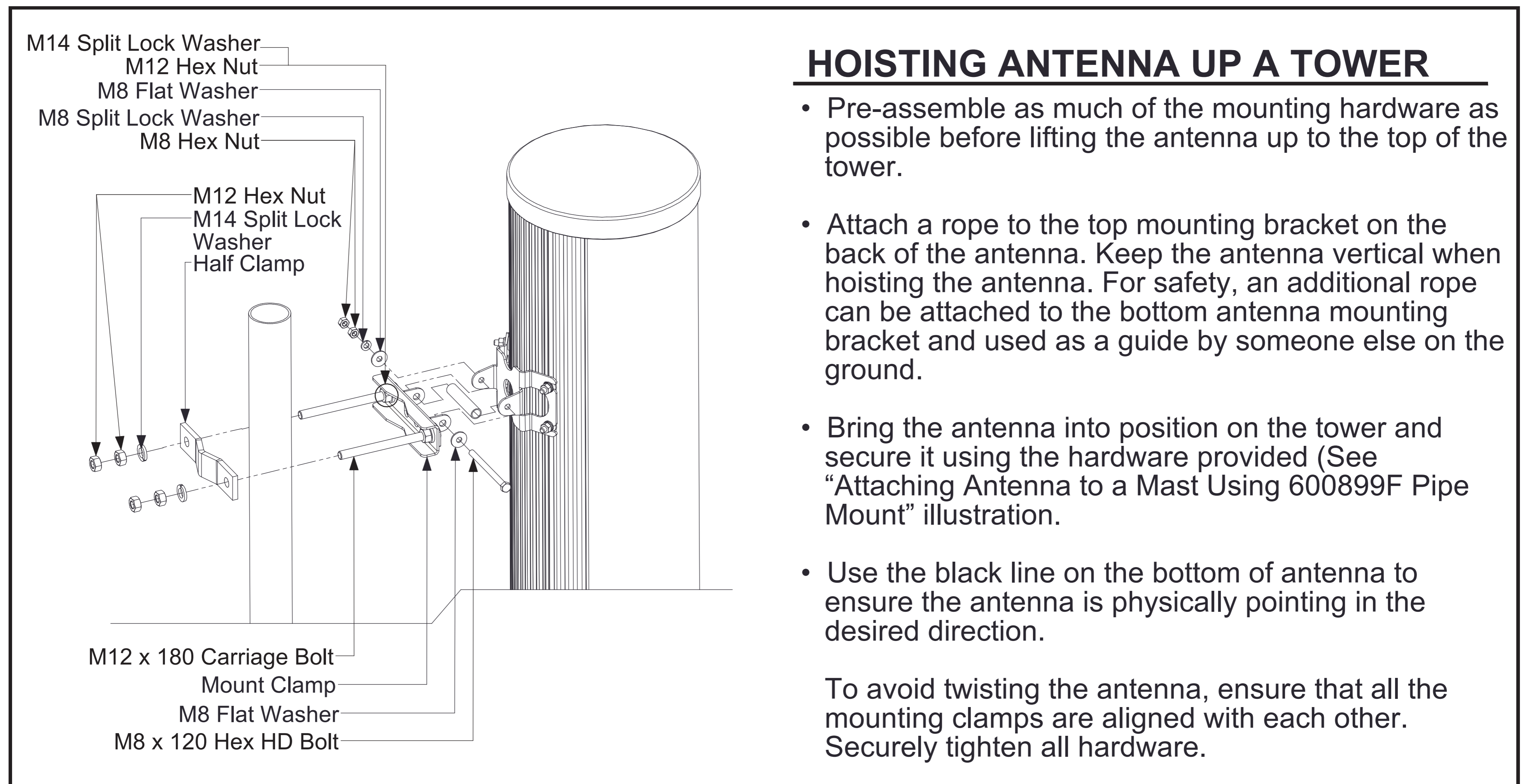


Do not install on a wet or windy day or when lightning or thunder is in the area. Do not use metal ladder.



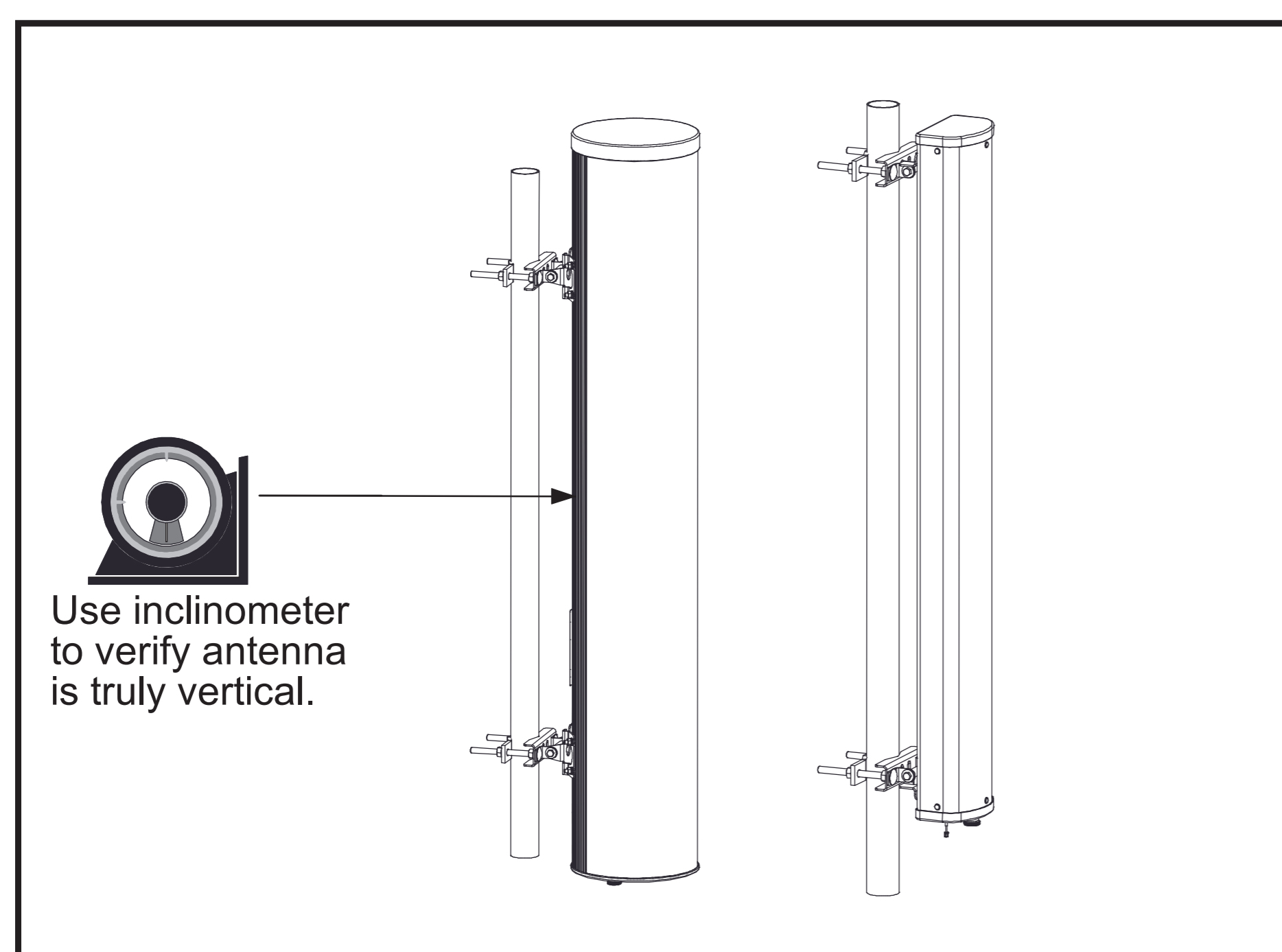
Wear shoes with rubber soles and heels. Wear protective clothing including a long-sleeved shirt and rubber gloves.

(Continued from page 1)

**HOISTING ANTENNA UP A TOWER**

- Pre-assemble as much of the mounting hardware as possible before lifting the antenna up to the top of the tower.
- Attach a rope to the top mounting bracket on the back of the antenna. Keep the antenna vertical when hoisting the antenna. For safety, an additional rope can be attached to the bottom antenna mounting bracket and used as a guide by someone else on the ground.
- Bring the antenna into position on the tower and secure it using the hardware provided (See “Attaching Antenna to a Mast Using 600899F Pipe Mount” illustration).
- Use the black line on the bottom of antenna to ensure the antenna is physically pointing in the desired direction.

To avoid twisting the antenna, ensure that all the mounting clamps are aligned with each other. Securely tighten all hardware.

*Attaching Antenna to a Mast Using 600899F Pipe Mount.**Verifying Vertical Alignment.***POST INSTALLATION INSTRUCTIONS**

- Connect the station transmission line (not supplied) to the antenna. Torque the 7-16 DIN connectors to the recommended 25-30 N-m (220-265 lbf-in).
- Carefully weatherproof all RF connections, covering all cracks and the outer jacket of the transmission line. Failure to waterproof the connection could result in improper operation of the antenna.
- Secure the transmission and control lines to the tower in the best position to avoid physical damage to the cables.

**CommScope**

1100 CommScope Place SE P.O. Box 339, Hickory, NC 28603-0339  
(828) 324-2200 (800) 982-1708  
www.commscope.com/andrew

**Customer Service 24 hours**

North America: +1-800-255-1479 (toll free)  
Any country: +1-779-435-6500  
email: acicustomersupportcenter@commscope.com

Notice: CommScope disclaims any liability or responsibility for the results of improper or unsafe installation, inspection, maintenance, or removal practices.  
Aviso: CommScope no acepta ninguna obligación ni responsabilidad como resultado de prácticas incorrectas o peligrosas de instalación, inspección, mantenimiento o retiro.  
Avis: CommScope décline toute responsabilité pour les conséquences de procédures d'installation, d'inspection, d'entretien ou de retrait incorrectes ou dangereuses.  
Hinweis: CommScope lehnt jede Haftung oder Verantwortung für Schäden ab, die aufgrund unsachgemäßer Installation, Überprüfung, Wartung oder Demontage auftreten.  
Atenção: A CommScope abdica do direito de toda responsabilidade pelos resultados de práticas inadequadas e sem segurança de instalação, inspeção, manutenção ou remoção.  
Avvertenza: CommScope declina eventuali responsabilità derivanti dall'esecuzione di procedure di installazione, ispezione, manutenzione e smontaggio improprie o poco sicure.  
注意: CommScope 公司申明对于不恰当或不安全的安装、检验、维修或拆卸操作所导致的后果不负任何义务和责任。