

RVVPX308.11B-T2



6-port sector antenna, 2x 694–960 and 4x 1695–2690 MHz, 65° HPBW, 3x RET with manual override and internal Bias-Tee's.

- Internal RET actuators are connected in SRET configuration, with dedicated AISG ports for each band
- Each port has an integrated bias tee, and each band has its own smart switch that automatically selects between bias tee or AISG inputs according to a predetermined priority table

OBSOLETE

This product was discontinued on: **March 31, 2021**

General Specifications

| | |
|---|--|
| Antenna Type | Sector |
| Band | Multiband |
| Grounding Type | RF connector body grounded to reflector and mounting bracket |
| Performance Note | Outdoor usage Wind loading figures are validated by wind tunnel measurements described in white paper WP-112534-EN |
| Radome Material | Fiberglass, UV resistant |
| Radiator Material | Low loss circuit board |
| Reflector Material | Aluminum |
| RF Connector Interface | 7-16 DIN Female |
| RF Connector Location | Bottom |
| RF Connector Quantity, high band | 4 |
| RF Connector Quantity, low band | 2 |
| RF Connector Quantity, total | 6 |

Remote Electrical Tilt (RET) Information

| | |
|--------------------------------|---|
| RET Interface | 8-pin DIN Female 8-pin DIN Male |
| RET Interface, quantity | 1 female 3 male |
| Input Voltage | 10–30 Vdc |
| Internal Bias Tee | Port 1 Port 2 Port 3 Port 4 Port 5 Port 6 |
| Internal RET | High band (2) Low band (1) |

RVVPX308.11B-T2

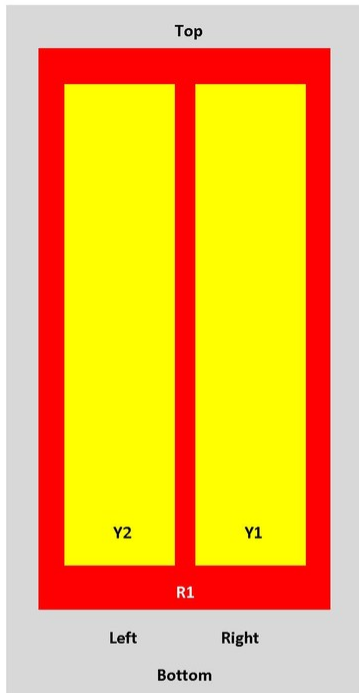
| | |
|--|----------------------------|
| Power Consumption, idle state, maximum | 2 W |
| Power Consumption, normal conditions, maximum | 13 W |
| Protocol | 3GPP/AISG 2.0 (Single RET) |

Dimensions

| | |
|---|---------------------|
| Width | 350 mm 13.78 in |
| Depth | 208 mm 8.189 in |
| Length | 2065 mm 81.299 in |
| Net Weight, without mounting kit | 29.7 kg 65.477 lb |

Array Layout

RVVPX



| Array | Freq (MHz) | Conns | RET (SRET) | AISG RET UID |
|-------|------------|-------|------------|----------------------|
| R1 | 698-960 | 1-2 | 1 | ARXXXXXXXXXXXXXXXXX1 |
| Y1 | 1710-2690 | 3-4 | 2 | ARXXXXXXXXXXXXXXXXX2 |
| Y2 | 1710-2690 | 5-6 | 3 | ARXXXXXXXXXXXXXXXXX3 |

View from the front of the antenna

(Sizes of colored boxes are not true depictions of array sizes)

Electrical Specifications

RVVPX308.11B-T2

| | |
|-----------------------------------|---------------------------------|
| Impedance | 50 ohm |
| Operating Frequency Band | 1695 – 2690 MHz 694 – 960 MHz |
| Polarization | ±45° |
| Total Input Power, maximum | 800 W @ 50 °C |

Electrical Specifications

| Frequency Band, MHz | 694–790 | 790–890 | 890–960 | 1695–1920 | 1920–2180 | 2300–2690 |
|---|----------|----------|----------|-----------|-----------|-----------|
| Gain, dBi | 15.3 | 15.9 | 16.2 | 17.4 | 17.9 | 18.4 |
| Beamwidth, Horizontal, degrees | 69 | 67 | 65 | 62 | 62 | 62 |
| Beamwidth, Vertical, degrees | 12.5 | 11.1 | 10.2 | 7.5 | 6.6 | 5.4 |
| Beam Tilt, degrees | 0–10 | 0–10 | 0–10 | 0–10 | 0–10 | 0–10 |
| USLS (First Lobe), dB | 18 | 18 | 18 | 18 | 18 | 18 |
| Null Fill, dB | -22 | -22 | -22 | -22 | -22 | -22 |
| Front-to-Back Ratio at 180°, dB | 29 | 32 | 33 | 33 | 38 | 38 |
| Isolation, Cross Polarization, dB | 28 | 28 | 28 | 30 | 30 | 30 |
| Isolation, Inter-band, dB | 30 | 30 | 30 | 30 | 30 | 30 |
| VSWR Return loss, dB | 1.5 14.0 | 1.5 14.0 | 1.5 14.0 | 1.5 14.0 | 1.5 14.0 | 1.5 14.0 |
| PIM, 3rd Order, 2 x 20 W, dBc | -150 | -150 | -150 | -150 | -150 | -150 |
| Input Power per Port at 50°C, maximum, watts | 175 | 175 | 175 | 175 | 175 | 175 |

Electrical Specifications, BASTA

| Frequency Band, MHz | 694–790 | 790–890 | 890–960 | 1695–1920 | 1920–2180 | 2300–2690 |
|---|--------------------------------|--------------------------------|--------------------------------|--------------------------------|--------------------------------|--------------------------------|
| Gain by all Beam Tilts, average, dBi | 15.1 | 15.7 | 16.1 | 17.1 | 17.7 | 18.2 |
| Gain by all Beam Tilts Tolerance, dB | ±0.4 | ±0.3 | ±0.1 | ±0.5 | ±0.3 | ±0.4 |
| Gain by Beam Tilt, average, dBi | 0° 15.1 5° 15.1 10° 15.0 | 0° 15.7 5° 15.7 10° 15.7 | 0° 16.1 5° 16.1 10° 16.1 | 0° 17.1 5° 17.1 10° 17.2 | 0° 17.7 5° 17.7 10° 17.7 | 0° 18.2 5° 18.2 10° 18.0 |
| Beamwidth, Horizontal Tolerance, degrees | ±0.9 | ±1.1 | ±1.8 | ±2.8 | ±2.5 | ±5.8 |
| Beamwidth, Vertical Tolerance, degrees | ±0.7 | ±0.6 | ±0.3 | ±0.5 | ±0.5 | ±0.4 |
| USLS, beampeak to 20° above beampeak, dB | 18 | 18 | 18 | 18 | 18 | 18 |

RVVPX308.11B-T2

| | | | | | | |
|--|----|----|----|----|----|----|
| Front-to-Back Total Power at 180° ± 30°, dB | 25 | 26 | 27 | 26 | 28 | 29 |
| CPR at Boresight, dB | 15 | 17 | 17 | 18 | 20 | 19 |
| CPR at Sector, dB | 12 | 12 | 14 | 13 | 12 | 10 |

Mechanical Specifications

| | |
|---|---|
| Wind Loading @ Velocity, frontal | 348.0 N @ 150 km/h (78.2 lbf @ 150 km/h) |
| Wind Loading @ Velocity, lateral | 294.0 N @ 150 km/h (66.1 lbf @ 150 km/h) |
| Wind Loading @ Velocity, maximum | 737.0 N @ 150 km/h (165.7 lbf @ 150 km/h) |
| Wind Loading @ Velocity, rear | 369.0 N @ 150 km/h (83.0 lbf @ 150 km/h) |
| Wind Speed, maximum | 241 km/h (150 mph) |

Packaging and Weights

| | |
|-----------------------|----------------------|
| Width, packed | 436 mm 17.165 in |
| Depth, packed | 320 mm 12.598 in |
| Length, packed | 2250 mm 88.583 in |
| Weight, gross | 50.2 kg 110.672 lb |

Regulatory Compliance/Certifications

| Agency | Classification |
|---------------|--|
| CHINA-ROHS | Above maximum concentration value |
| ISO 9001:2015 | Designed, manufactured and/or distributed under this quality management system |
| ROHS | Compliant/Exempted |
| UK-ROHS | Compliant/Exempted |



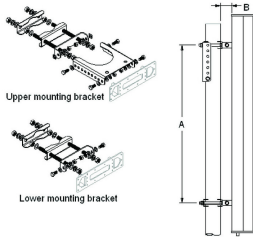
Included Products

| | | |
|------------|---|--|
| T-029-GL-E | - | Adjustable Tilt Pipe Mounting Kit for 2.362"-4.5" (60-115mm) OD round members for panel antennas. Includes 2 clamp sets. |
|------------|---|--|

* Footnotes

| | |
|-------------------------|---|
| Performance Note | Severe environmental conditions may degrade optimum performance |
|-------------------------|---|

T-029-GL-E



Adjustable Tilt Pipe Mounting Kit for 2.362"-4.5" (60-115mm) OD round members for panel antennas. Includes 2 clamp sets.

Product Classification

Product Type Adjustable tilt mounting kit

General Specifications

Application Outdoor

Color Silver

Dimensions

Compatible Length, maximum 2850 mm | 112.205 in

Compatible Length, minimum 1500 mm | 59.055 in

Compatible Diameter, maximum 115 mm | 4.528 in

Compatible Diameter, minimum 60 mm | 2.362 in

Antenna-to-Pipe Distance 85 mm | 3.346 in

Bracket-to-Bracket Distance 1400 mm | 55.118 in

Weight, net 6 kg | 13.228 lb

Material Specifications

Material Type Galvanized steel

Mechanical Specifications

Mechanical Tilt 0°-8°

Packaging and Weights

Included Brackets | Hardware

Packaging quantity 1

Regulatory Compliance/Certifications

| Agency | Classification |
|--------|---|
| CE | Compliant with the relevant CE product directives |

T-029-GL-E

| | |
|---------------|--|
| CHINA-ROHS | Below maximum concentration value |
| ISO 9001:2015 | Designed, manufactured and/or distributed under this quality management system |
| REACH-SVHC | Compliant as per SVHC revision on www.commscope.com/ProductCompliance |
| ROHS | Compliant |
| UK-ROHS | Compliant |

