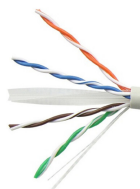


1427072-4 | CS30R GRY C6 4/24 U/UTP RIB 305M



Copper Cable, category 6, 4 pair, UTP, CMR rated, 24 AWG, 305 m reel in box, gray

Product Classification

Regional Availability	Asia Latin America
Portfolio	NETCONNECT®
Product Type	Twisted pair cable

General Specifications

Product Number	CS30R
ANSI/TIA Category	6
Cable Component Type	Horizontal
Cable Type	U/UTP (unshielded)
Conductor Type, singles	Solid
Conductors, quantity	8
Jacket Color	Gray
Pairs, quantity	4
Transmission Standards	ANSI/TIA-568.2-D CENELEC EN 50288-6-1 ISO/IEC 11801 Class E

Dimensions

Cable Length	304.8 m 1000 ft
Diameter Over Insulated Conductor	0.978 mm 0.038 in
Diameter Over Jacket, nominal	5.588 mm 0.22 in
Conductor Gauge, singles	24 AWG

Electrical Specifications

Nominal Velocity of Propagation (NVP)	68 %
Operating Frequency, maximum	250 MHz
Operating Voltage, maximum	80 V
Remote Powering	Fully complies with the recommendations set forth by IEEE 802.3bt (Type 4) for the safe delivery of power over LAN cable when installed according to ISO/IEC 14763-2,

1427072-4 | CS30R GRY C6 4/24 U/UTP RIB 305M

CENELEC EN 50174-1, CENELEC EN 50174-2 or TIA TSB-184-A

Material Specifications

Conductor Material	Bare copper
Insulation Material	Polyolefin
Jacket Material	PVC

Mechanical Specifications

Minimum Bend Radius Note	4 times the outer cable diameter
---------------------------------	----------------------------------

Environmental Specifications

Installation temperature	0 °C to +60 °C (+32 °F to +140 °F)
Operating Temperature	-20 °C to +60 °C (-4 °F to +140 °F)
Flame Test Method	CMR UL 1666

Packaging and Weights

Packaging Type	Reel in box
-----------------------	-------------

Regulatory Compliance/Certifications

Agency	Classification
CHINA-ROHS	Below maximum concentration value
REACH-SVHC	Compliant as per SVHC revision on www.commscope.com/ProductCompliance
ROHS	Compliant
UK-ROHS	Compliant

