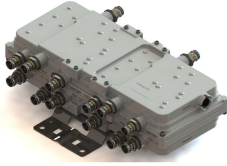


E14F10P73



Quad Triplexer 1695-2200/2300-2400/2500-2690, dc bypass on all ports, with 4.3-10 connectors

- Ideal for small cell applications
- Compact form factor with reduced size and weight
- Suitable for space limited applications like Metro Cell, Lamp Pole, Concealment Solution and Macro Site
- New 4.3-10 connectors for improved PIM performance and size reduction
- Designed for network modernization application, introduction of LTE 4x4 MIMO
- Quad configuration, 4x4 MIMO ready
- dc/AISG pass-through on all frequency ports

OBSOLETE

This product was discontinued on: December 30, 2024

Product Classification

Product Type Triplexer

General Specifications

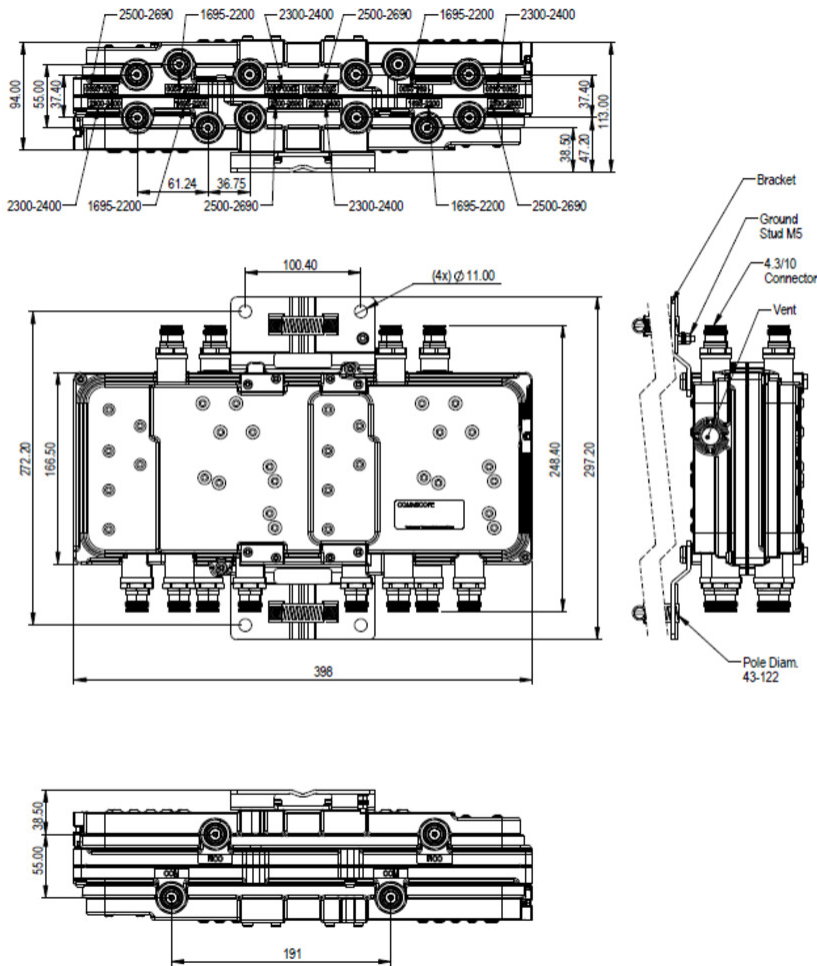
Modularity 4-Quad
Mounting Pole | Wall
Mounting Pipe Hardware Band clamps (2)
RF Connector Interface 4.3-10 Female

Dimensions

Height 94 mm | 3.701 in
Width 398 mm | 15.669 in
Depth 167 mm | 6.575 in
Mounting Pipe Diameter Range 42.6–122 mm

Outline Drawing

E14F10P73



Electrical Specifications

Impedance 50 ohm

Electrical Specifications, dc Power/Alarm

Lightning Surge Current 10 kA

Lightning Surge Current Waveform 8/20 waveform

Electrical Specifications

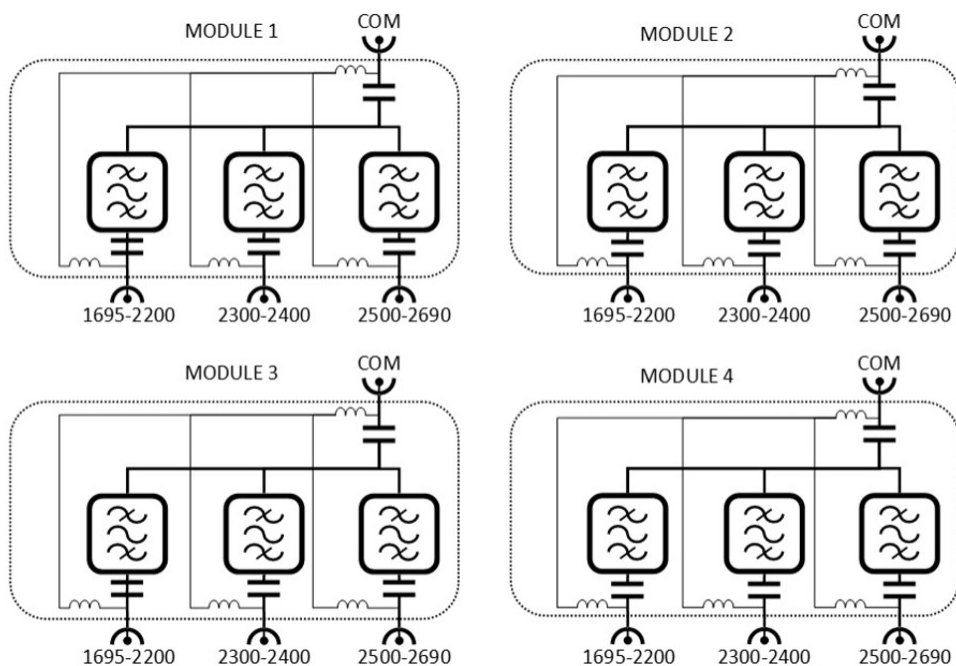
Sub-module	1 2	1 2	1 2
Branch	1	2	3
Port Designation	1695-2200	2300-2400	2500-2690

Electrical Specifications, Band Pass

E14F10P73

Frequency Range, MHz	1695–2200	2300–2400	2500–2690
Insertion Loss, typical, dB	0.15	0.15	0.6
Return Loss, typical, dB	20	20	20
Isolation, typical, dB	35	35	35
Input Power, RMS, maximum, W	120	120	120
Input Power, PEP, maximum, W	1200	1200	1200
3rd Order PIM, typical, dBc	-155	-155	-155
3rd Order PIM Test Method	Two +43 dBm carriers	Two +43 dBm carriers	Two +43 dBm carriers

Block Diagram



Environmental Specifications

Operating Temperature	-10 °C to +60 °C (+14 °F to +140 °F)
Corrosion Test Method	IEC 60068-2-11, 30 days
Environmental Test Method	ETSI EN 300 019-1-4
Ingress Protection Test Method	IEC 60529:2001, IP67

Packaging and Weights

Included	Mounting hardware
----------	-------------------

E14F10P73

Volume	6.2 L
Weight, net	9 kg 19.842 lb
Weight, without mounting hardware	8.45 kg 18.629 lb