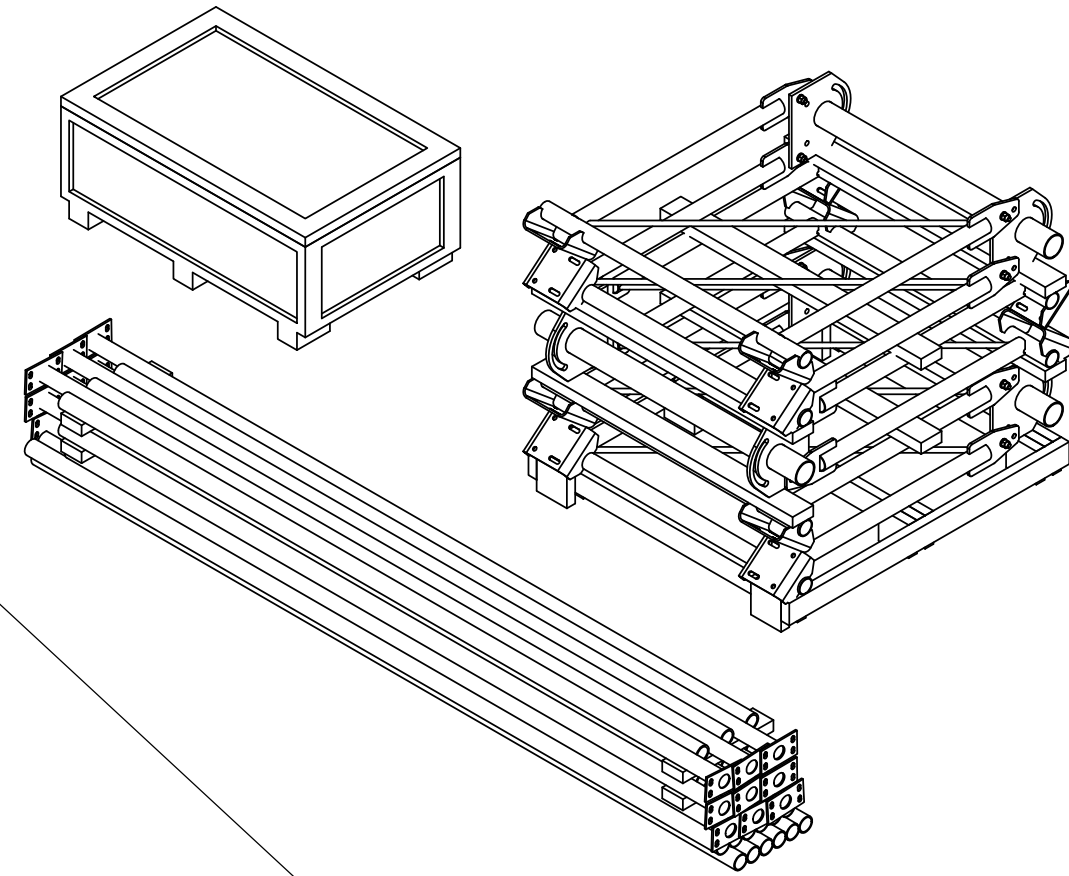
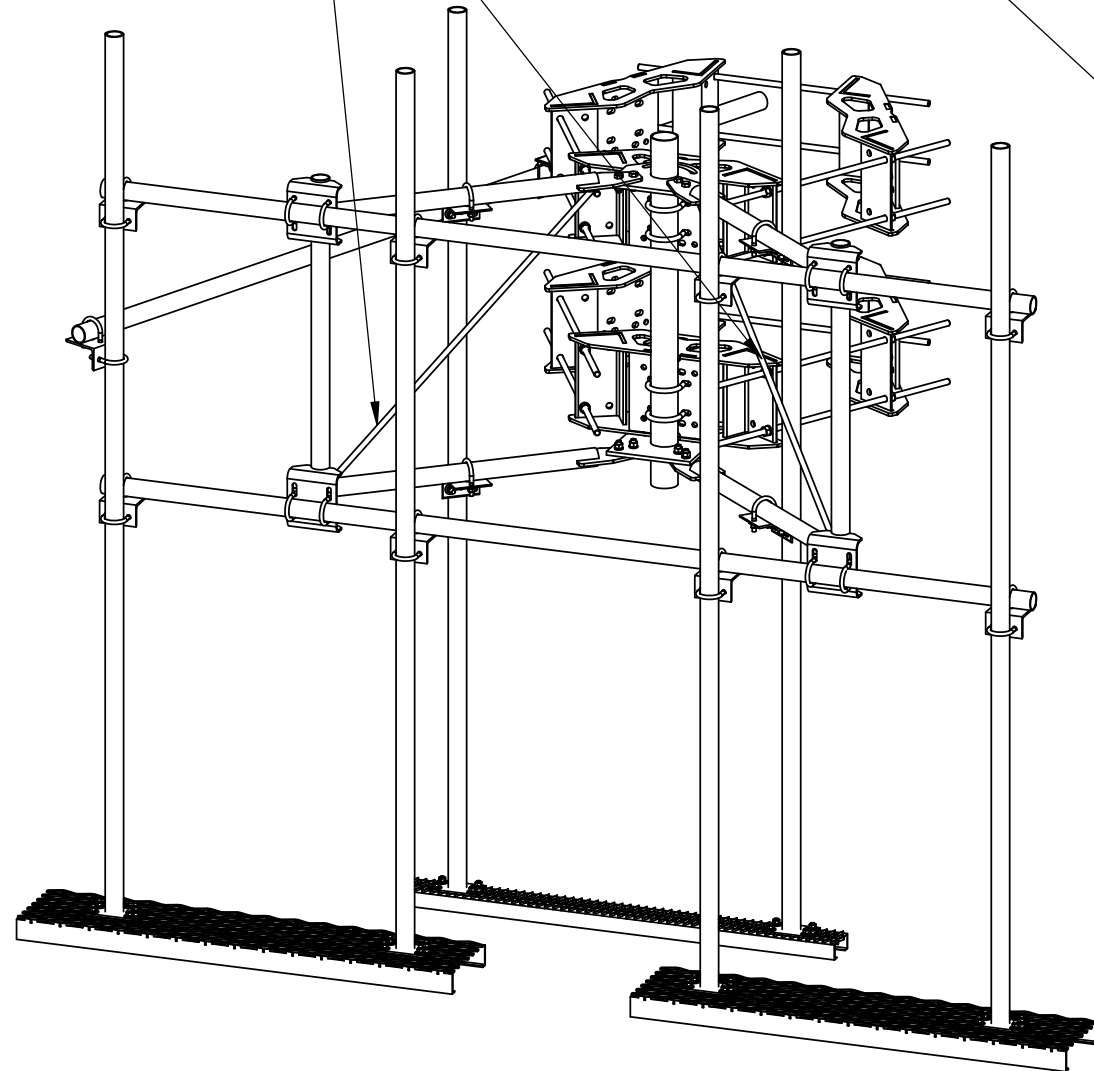


REVISIONS				
REV.	ECN	DESCRIPTION	BY	DATE
B	8000016825	INITIAL RELEASE	DRR	10/20/16

**MUST BE INSTALLED WITH
DIAGONALS AS SHOWN**



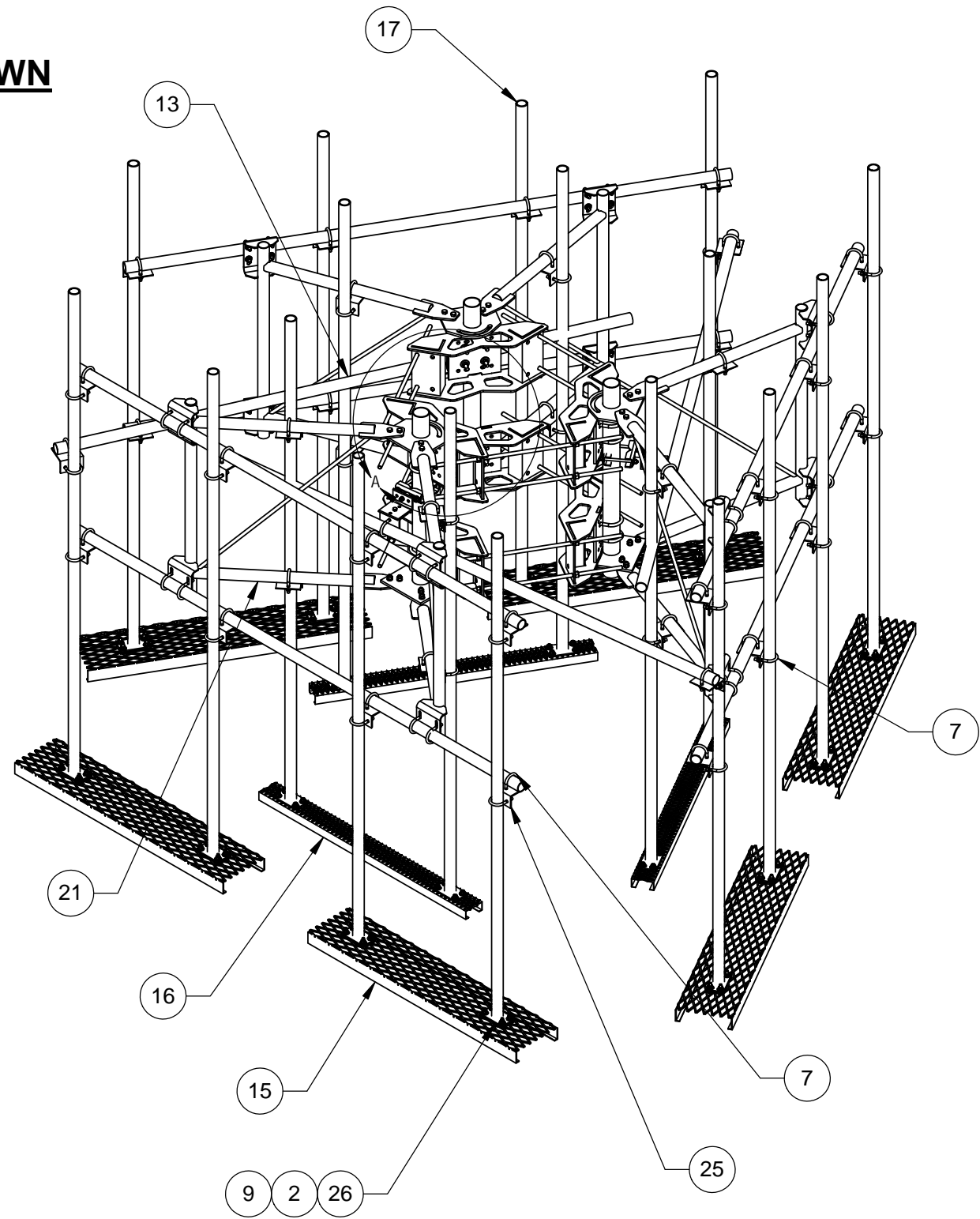
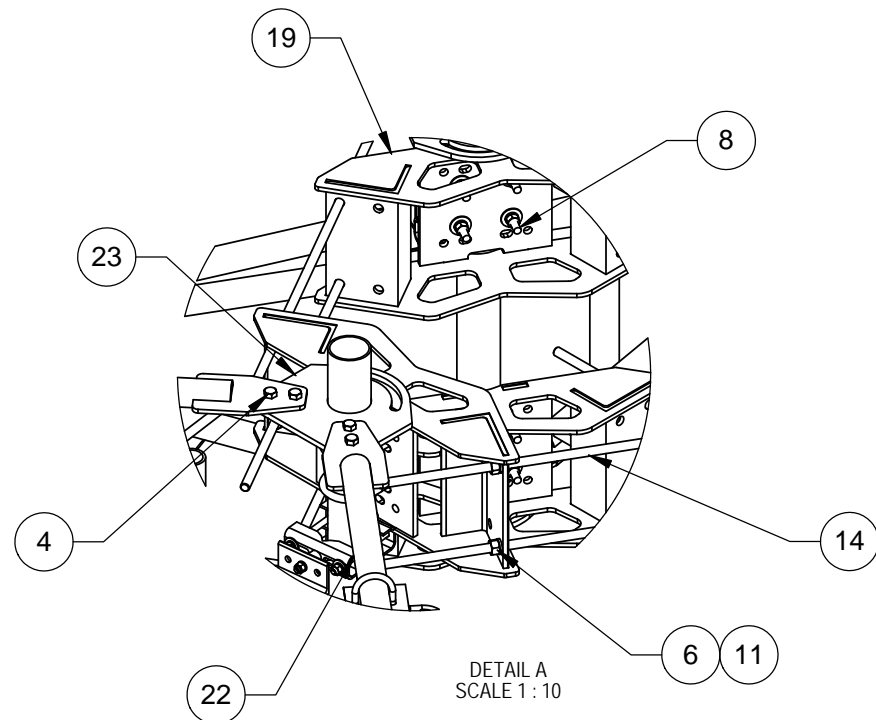
1.0 ALL METRIC DIMENSIONS ARE IN BRACKETS.
2.0 FITS MONOPOLES 12"-50" OD.

COMMScope, INC. OF NORTH CAROLINA

TOLERANCES		SAP MATERIAL MASTER	
0 PLACE X ± .25	2 PLACE .XX ± .06	MTC3914M3	
1 PLACE X ± .12	ANGLES ± 2°		
FINISH		MATERIAL	
GALV A123		A36, A500	
UNLESS OTHERWISE SPECIFIED, DIMENSIONS ARE IN MILLIMETERS INTERPRET PER ISO STANDARDS HANDBOOK TECHNICAL DRAWINGS, VOLUMES 1 & 2, THIRD EDITION (2002)		TITLE	
CE	NAME	DATE	SECTOR FRAME MONOPOLE KIT W/ PLATFORMS
RW	DRR	10/20/16	
RV			
AD			
RE	TP	10/20/16	SCALE
ECN	8000016825		DOCUMENT NO.
			1:16
			MTC3914M3
SIZE	WORK AREA	MODEL	DRAWING
C		VERSION	STATUS
		REVISION	VERSION
		REVISION	STATUS
			REVISION
			SHEET
			1 OF 6

NOTES:

MOUNT MUST BE INSTALLED WITH DIAGONALS AS SHOWN



ITEM	PART NO.	DESCRIPTION	QTY.	WEIGHT	NOTE NO.
1	GB-04125	1/2" X 1-1/4" GALV BOLT KIT	3	0.12 LBS	
2	GB-04205	1/2" X 2" GALV BOLT KIT	72	0.16 LBS	
3	GB-04265	1/2" X 2-3/4" GALV BOLT KIT	3	0.20 LBS	
4	GB-0520A	5/8" X 2" GALV BOLT KIT (A325)	24	0.26 LBS	
5	GN-04	1/2" GALV HEX NUT	12	0.04 LBS	
6	GN-06	3/4" GALV HEX NUT	24	0.15 LBS	
7	GUB-4240	1/2" X 2-1/2" X 4" GALV U-BOLT	105	0.56 LBS	
8	GUB-53560	5/8" X 3-5/8" X 6" GALV U-BOLT	12	1.28 LBS	
9	GWF-04	1/2" GALV FLAT WASHER	156	0.03 LBS	
10	GWL-04	1/2" GALV LOCK WASHER	12	0.01 LBS	
11	GWL-06	3/4" GALV LOCK WASHER	24	0.04 LBS	
12	MT-379-8	1/2" X 8" GALV THREADED ROD	6	0.44 LBS	
13	MT-537	Ø 2.375" OD x 126" PIPE	3	30.45 LBS	
14	MT38440	3/4" X 40" GALV THREADED ROD GRADE B7	12	4.98 LBS	
15	MTC391411	SAFETY GRATING 12" X 48"	6	32.80 LBS	
16	MTC391413	SAFETY GRATING 5" X 48"	3	14.96 LBS	
17	MTC3914AP120	120" WORK PLATFORM ANTENNA PIPE	18	51.32 LBS	
18	OS15034	3/4" X 1-1/2" OFFSET COLLAR	3	0.14 LBS	
19	RM1550301	15"-50" 3 SECTOR RM WLDMNT	6	66.20 LBS	
20	SAB01	FORMED CLAMP	6	1.35 LBS	
21	SFG2201	SECTOR FRAME ARM WLDMNT	3	52.49 LBS	
22	SFG2202	SECTOR FRAME ARM WLDMNT	3	52.49 LBS	
23	SFG2203	BACK VERTICAL ARM MOUNT	3	48.72 LBS	
24	SFG23126	128" SCH 40 PIPE 2-3/8" OD	6	38.76 LBS	
25	XA2020.01	CROSS OVER ANGLE	45	2.65 LBS	
26	WP21607	PLATE, BACKING	18	1.37 LBS	

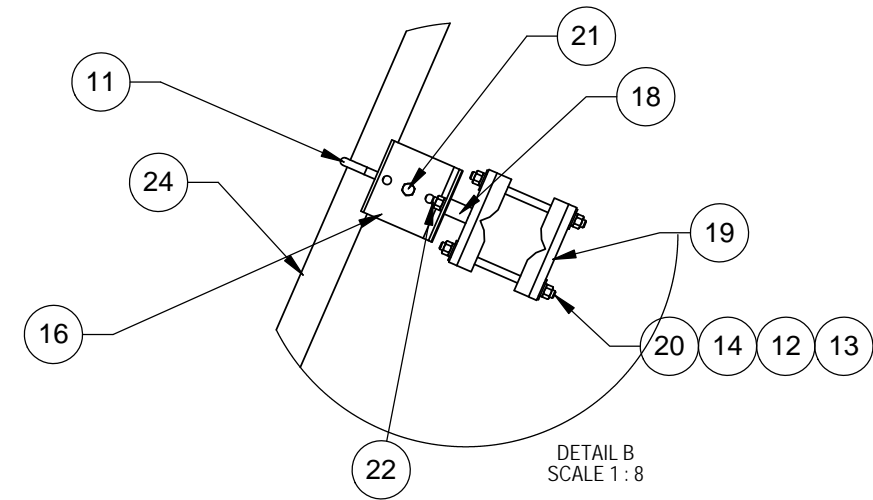
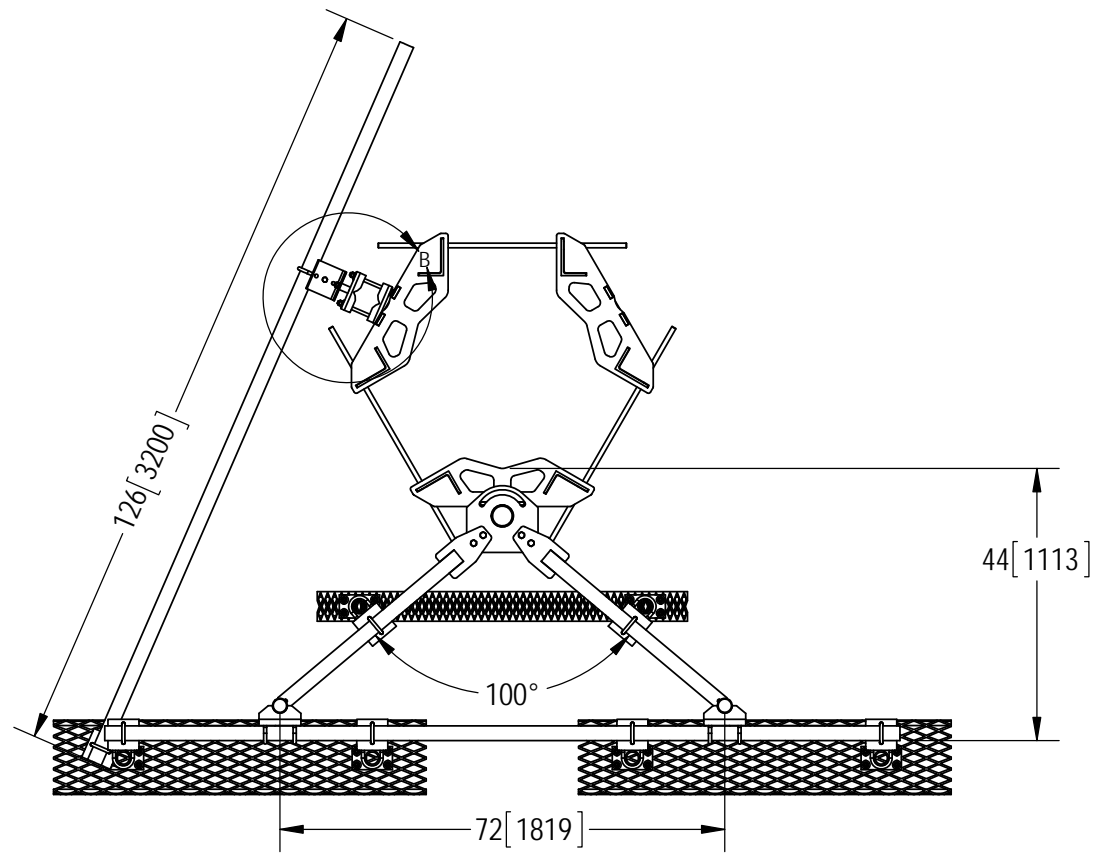
COMMScope, INC. OF NORTH CAROLINA

TITLE
SECTOR FRAME MONOPOLE KIT W/PLATFORMS

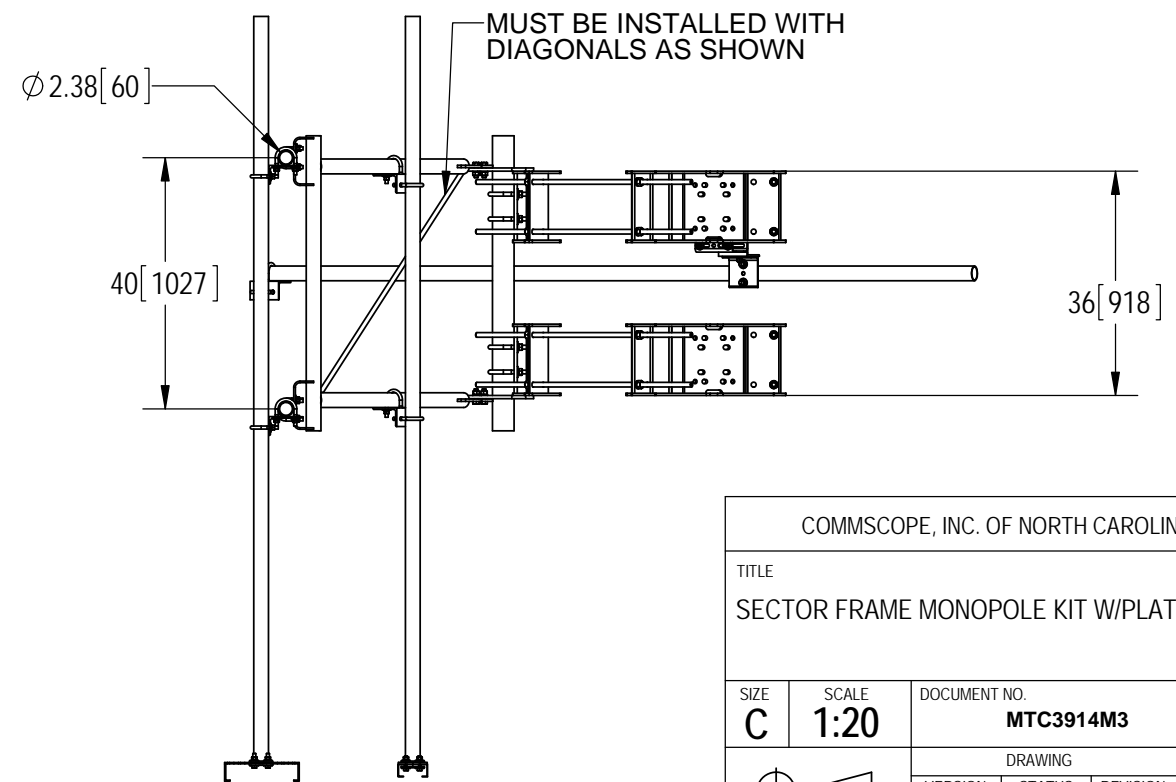
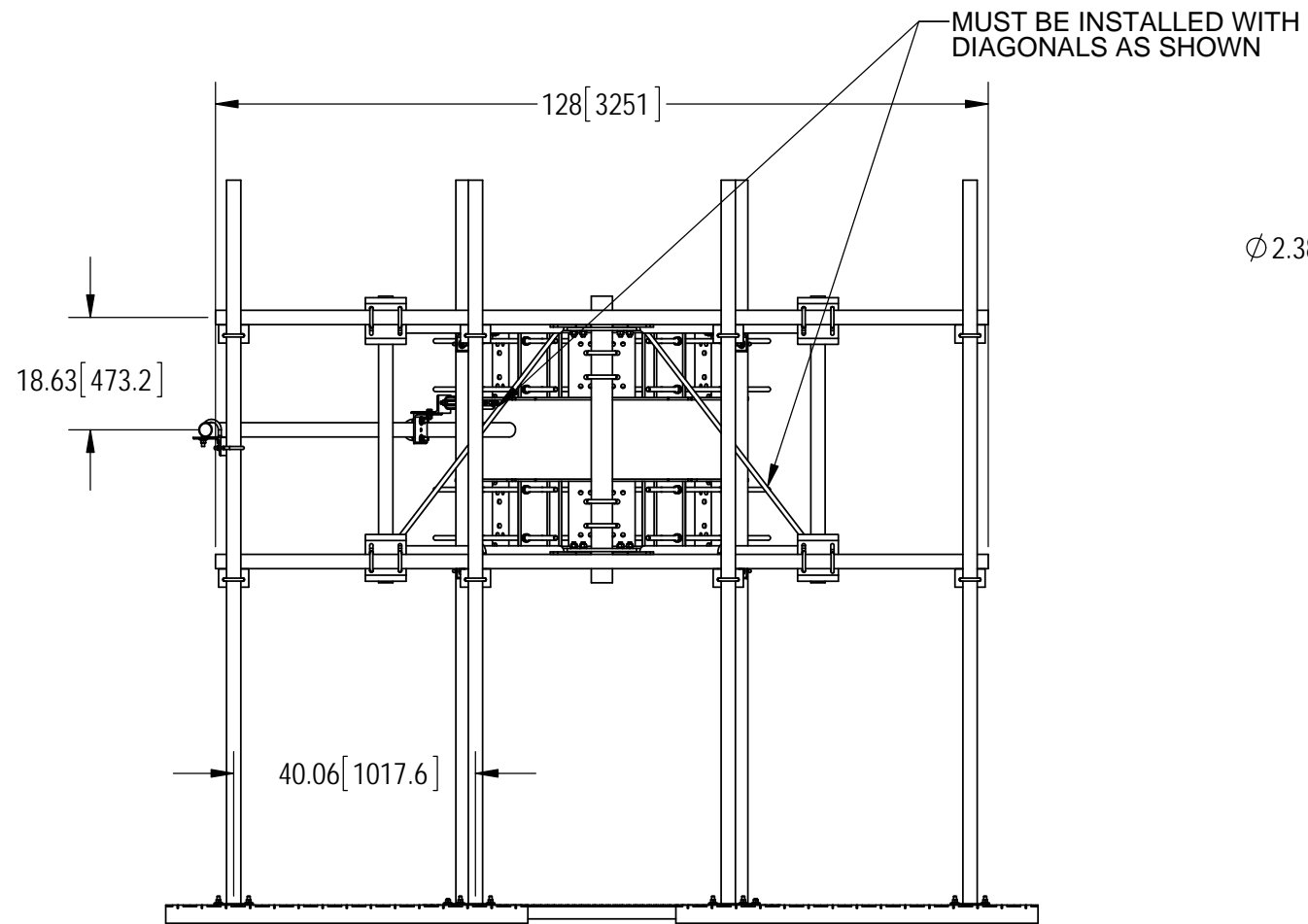
SIZE C	SCALE 1:20	DOCUMENT NO. MTC3914M3
DRAWING		SHEET
VERSION	STATUS	REVISION
		B
		2 OF 6

NOTES:

1.0 ALL METRIC DIMENSIONS ARE IN BRACKETS.



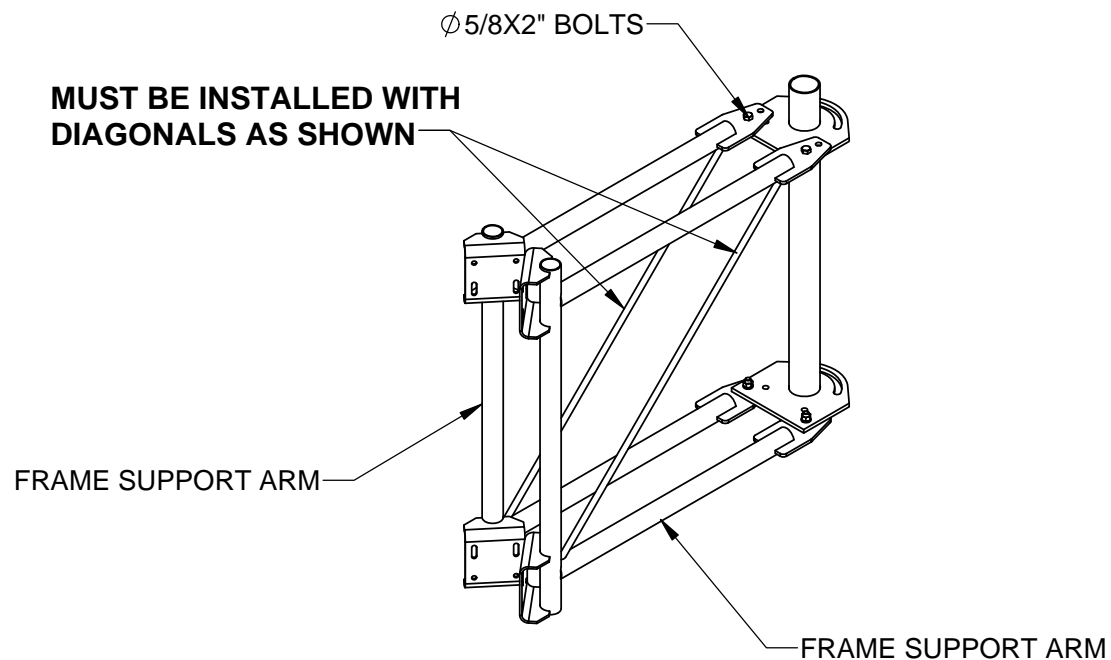
SOME ITEMS OMITTED FOR CLARITY



COMMSCOPE, INC. OF NORTH CAROLINA			
TITLE SECTOR FRAME MONOPOLE KIT W/PLATFORMS			
SIZE C	SCALE 1:20	DOCUMENT NO. MTC3914M3	
DRAWING			SHEET
VERSION	STATUS	REVISION	3 OF 6
		B	

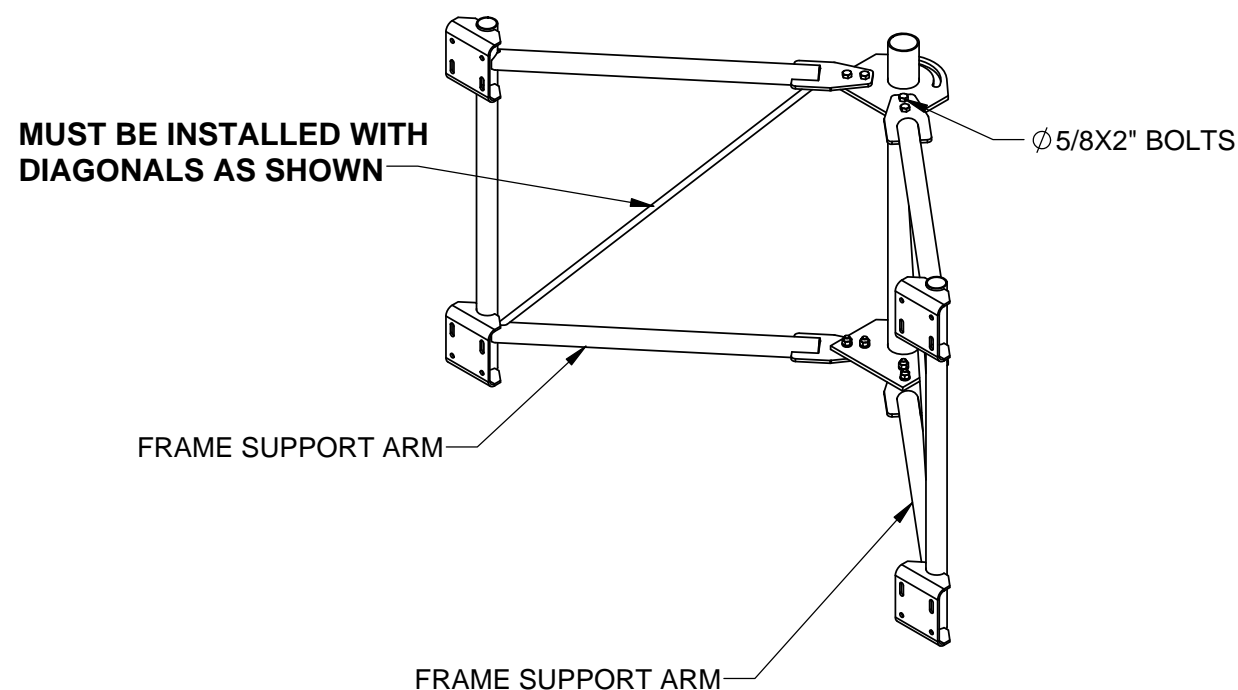
© 2015 CommScope, Inc. Confidential

STEP 1: LOOSEN ϕ 5/8 HARDWARE TO OPEN FRAME SUPPORT ARMS.



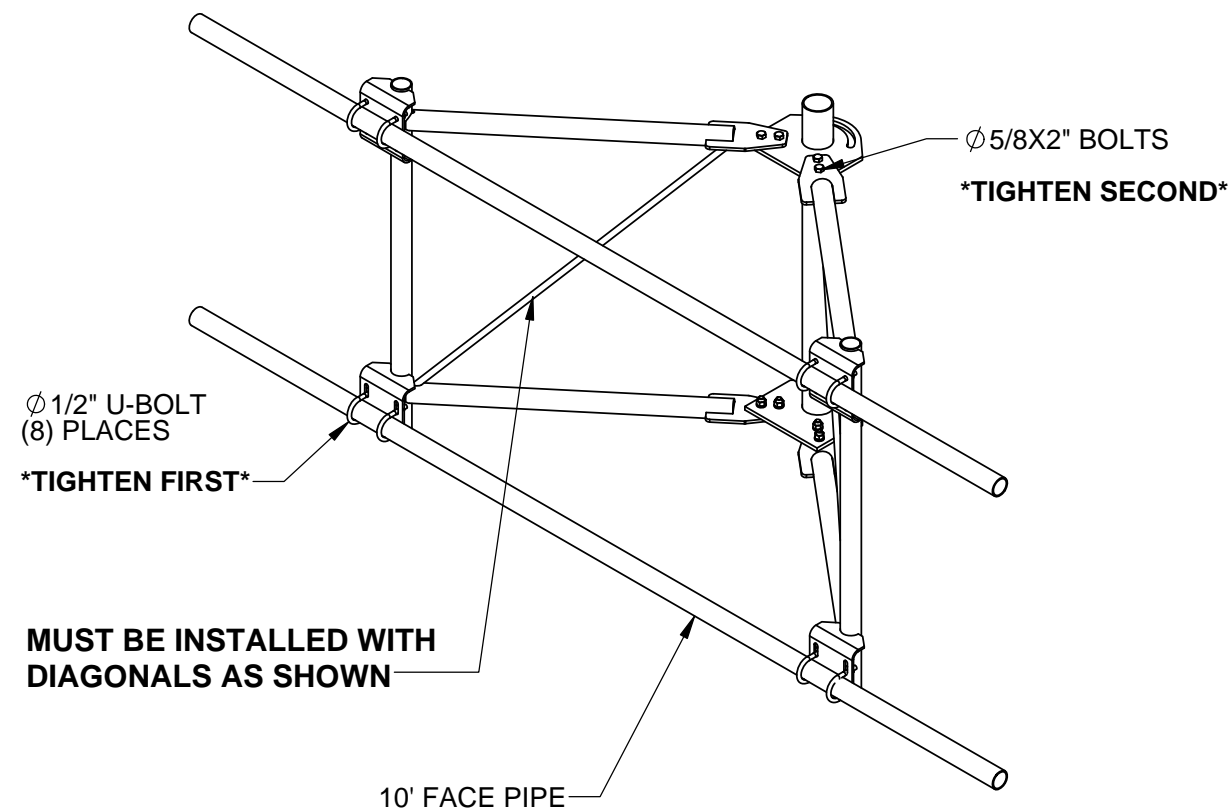
STEP 2: OPEN FRAME SUPPORT ARMS AND INSTALL (4) ϕ 5/8 X 2" BOLTS.

DO NOT TIGHTEN ϕ 5/8" BOLTS AT THIS TIME

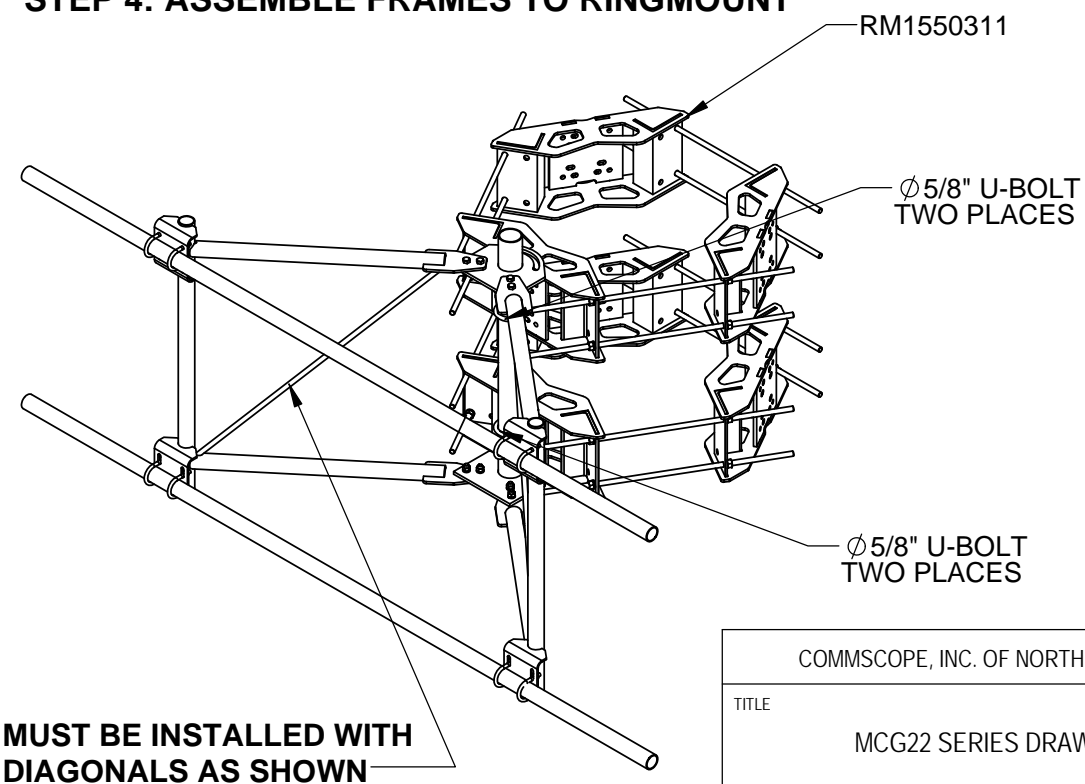


STEP 3: INSTALL FACE PIPES AND ϕ 1/2" U-BOLTS

TIGHTEN U-BOLTS FIRST AND ϕ 5/8" BOLTS SECOND

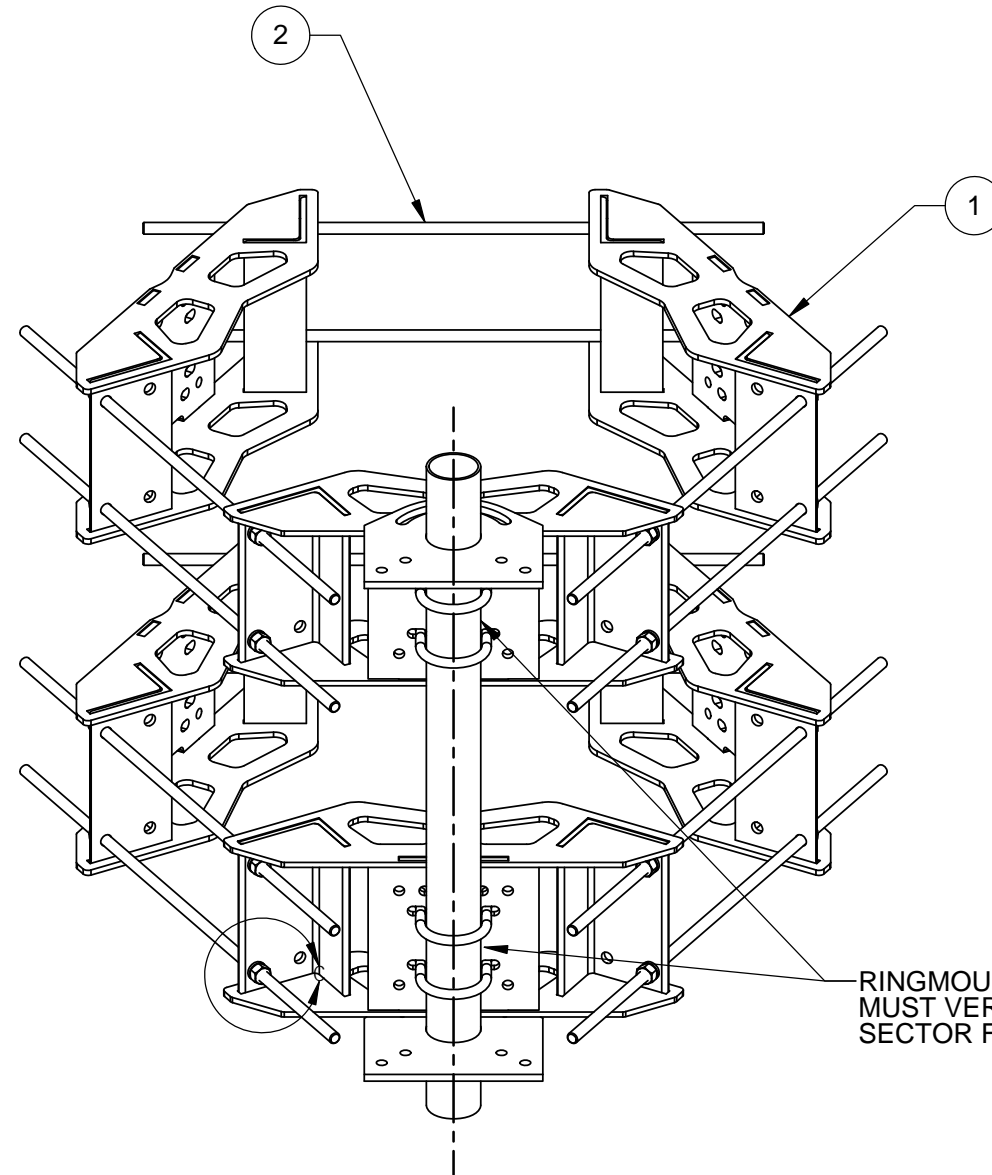


STEP 4: ASSEMBLE FRAMES TO RINGMOUNT

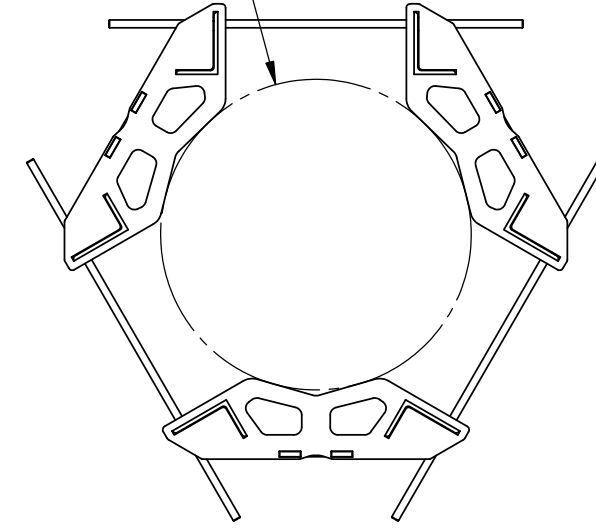


COMMSCOPE, INC. OF NORTH CAROLINA			
TITLE MCG22 SERIES DRAWING			
SIZE C	SCALE 1:14	DOCUMENT NO. MTC3914M3	
DRAWING			SHEET
VERSION	STATUS	REVISION	4 OF 6
		B	

NOTES:

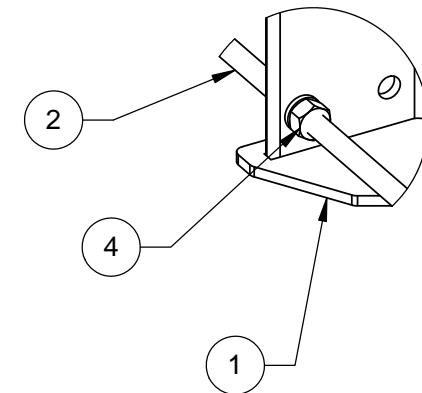


FITS MONOPOLES ϕ 50 [1270.00]
15 [381.00]



RINGMOUNT SECTOR CENTERLINE
MUST VERTICALLY ALIGN TO ALLOW
SECTOR FRAME SPINE PROPER MOUNTING

SOME ITEMS OMITTED FOR CLARITY



DETAIL C
SCALE 1:4

ITEM	PART NO.	DESCRIPTION	QTY.	WEIGHT	NOTE NO.
1	RM1550301	15"-50" 3 SECTOR RM WLDMNT	6	66.20 LBS	
2	MT38440	3/4" X 40" GALV THREADED ROD GRADE B7	12	4.98 LBS	
3	GWL-06	3/4" GALV LOCK WASHER	24	0.04 LBS	
4	GN-06	3/4" GALV HEX NUT	24	0.15 LBS	

COMMScope, INC. OF NORTH CAROLINA

TITLE

MCG22 SERIES DRAWING

SIZE
C

SCALE
1:8

DOCUMENT NO.
MTC3914M3



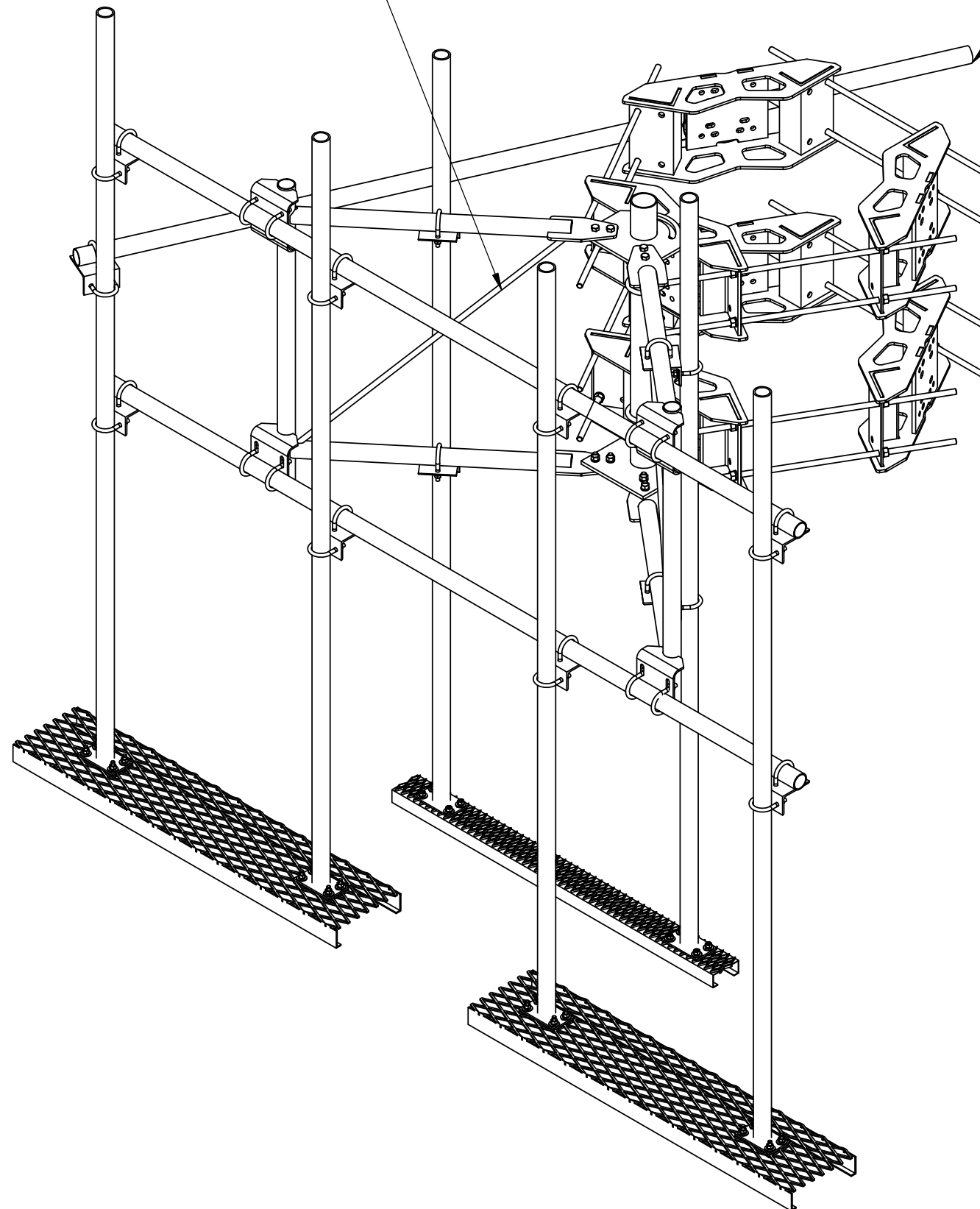
DRAWING			SHEET 5 OF 6
VERSION	STATUS	REVISION	
		B	

© 2015 CommScope, Inc. Confidential

NOTES:

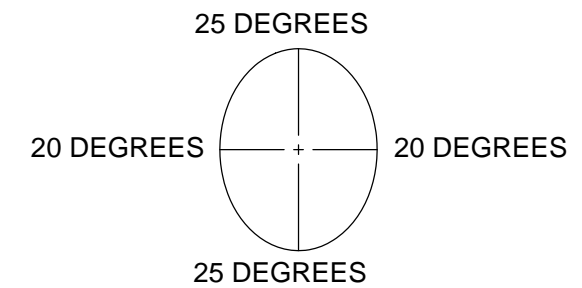
MOUNT MUST BE INSTALLED WITH DIAGONALS AS SHOWN

TIEBACK MUST BE CONNECTED TO A RIGID MEMBER THAT PROVIDES ADEQUATE SUPPORT WITHIN THE LIMITS NOTED IN THE TIEBACK ANGLE RANGE DETAIL, UNLESS APPROVED BY THE ENGINEER OF RECORD.



ALLOWABLE TIEBACK ANGLE

±25 DEGREES VERTICAL
±20 DEGREES HORIZONTAL



COMMSCOPE, INC. OF NORTH CAROLINA

TITLE

MCG22 SERIES DRAWING

SIZE
C

SCALE
1:8

DOCUMENT NO.
MCG22 SERIES



DRAWING

VERSION

STATUS

REVISION
B

SHEET
6 OF 6