

4

3

2

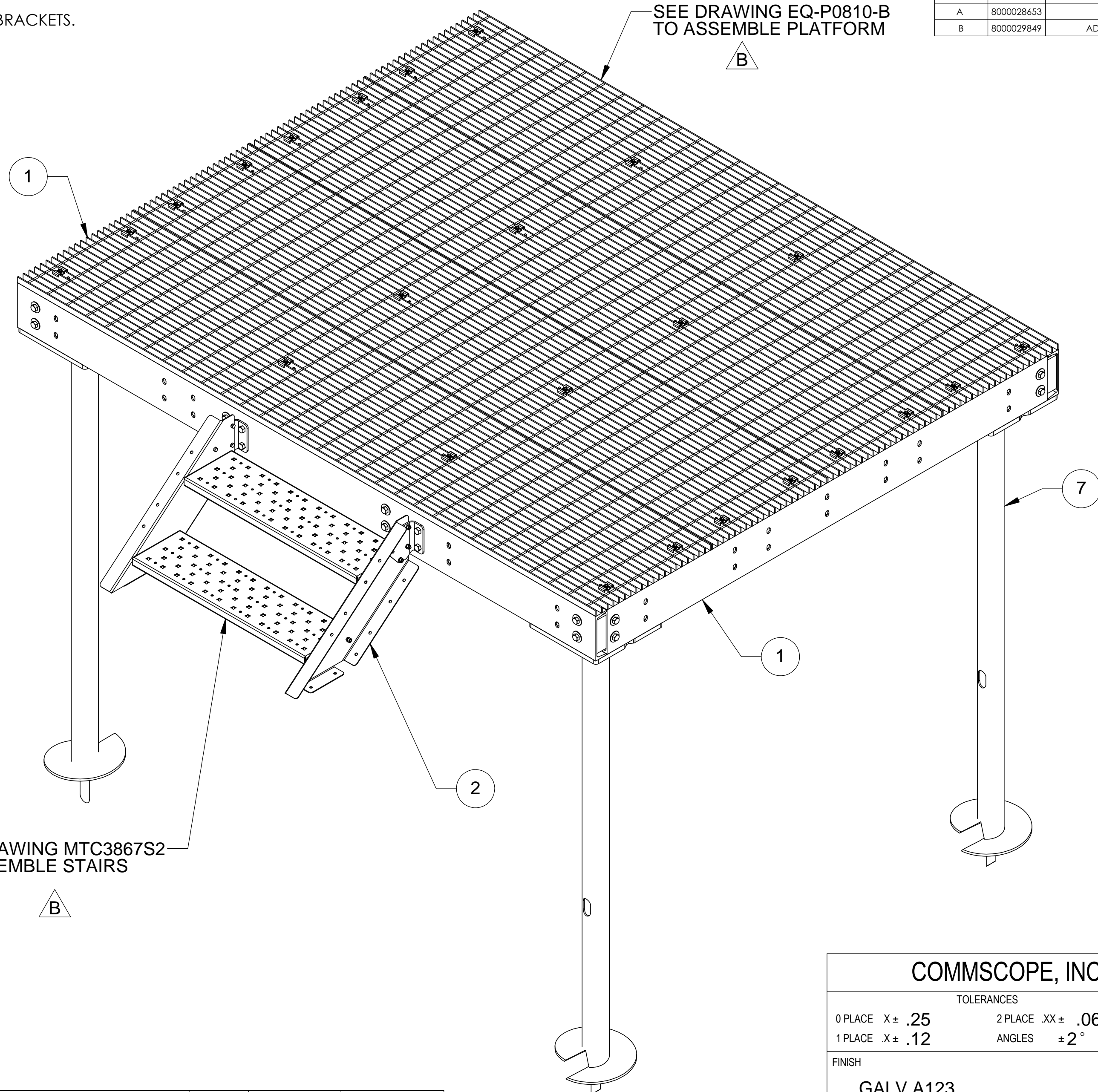
1

NOTES:

1.0 ALL METRIC DIMENSIONS ARE IN BRACKETS.

REVISIONS				
REV.	ECN	DESCRIPTION	BY	DATE
A	8000028653	INITIAL RELEASE	RJC	03/05/18
B	8000029849	ADDED CALLOUTS OF SUBASSY DWGS	RJC	06/01/18

SEE DRAWING EQ-P0810-B TO ASSEMBLE PLATFORM



SEE DRAWING MTC3867S2 TO ASSEMBLE STAIRS



ITEM	PART NO.	DESCRIPTION	QTY.	WEIGHT	NOTE NO.
1	EQ-P0810-B	8' X 10' Platform Base	1	1219.87 LBS	
2	MTC3867S2	STAIR ASSEMBLY, TWO STEP	1	63.05 LBS	
3	MTC397902	PINCH PLATE, LONG	4	2.84 LBS	
4	MTC397901	PINCH PLATE	4	0.90 LBS	
5	GB-06305	3/4" X 3" GALV BOLT KIT	12	0.53 LBS	
6	GWF-06	3/4" GALV FLAT WASHER	12	0.10 LBS	
7	ST-HB0704	LIGHTING FOUNDATION 7",4" OD; 14" SQ	4	109.56 LBS	

**COMMScope, INC. OF NORTH CAROLINA**

TOLERANCES		SAP MATERIAL MASTER	
0 PLACE X ± .25	2 PLACE .XX ± .06	<b>MTC39790704</b>	
1 PLACE X ± .12	ANGLES ± 2°		
FINISH		MATERIAL	
<b>GALV A123</b>		<b>A500, A529, A572, A1011/A1018</b>	
UNLESS OTHERWISE SPECIFIED DIMENSIONS ARE IN MILLIMETERS INTERPRET PER ISO STANDARDS HANDBOOK TECHNICAL DRAWINGS VOLUMES 1 & 2, THIRD EDITION (2002)	NAME	DATE	TITLE
	CE <b>RJC</b>	02/27/18	<b>8X10 PLATFORM, 2-STEP, (4) 7'X4" OD HLCL</b>
	RW		
	RV		
	AD		
RE <b>TP</b>	02/27/18	SCALE	DOCUMENT NO.
ECN <b>8000028653</b>		<b>1:12</b>	<b>MTC39790704</b>
SIZE	WORK AREA	MODEL	
<b>C</b>		VERSION	STATUS
		REVISION	REVISION
		DRAWING	
		VERSION	STATUS
		REVISION	REVISION
		<b>B</b>	
			SHEET
			1 OF 4

DENSITY	6196	lbs/in <sup>3</sup>
MASS	1746	lbs
VOLUME	6196	in <sup>3</sup>
SURFACE AREA		in <sup>2</sup>
HEIGHT		
LENGTH		
WIDTH		

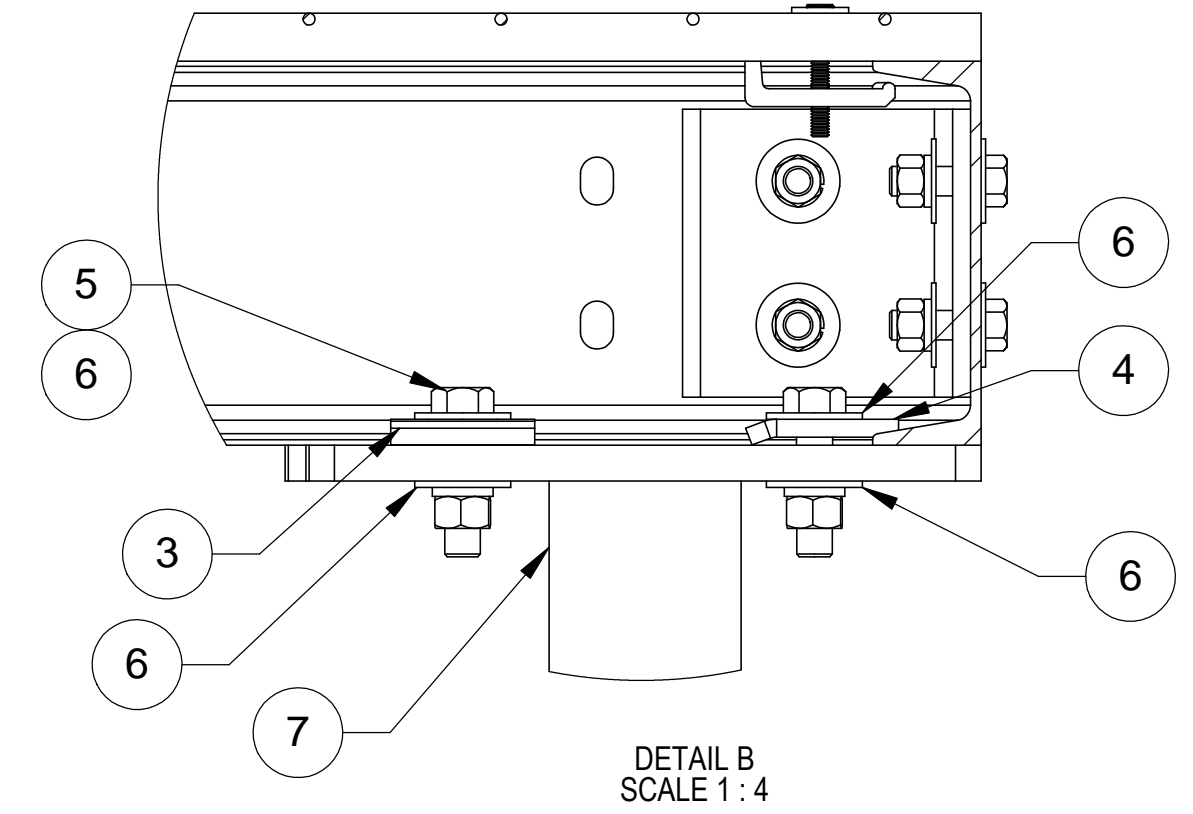
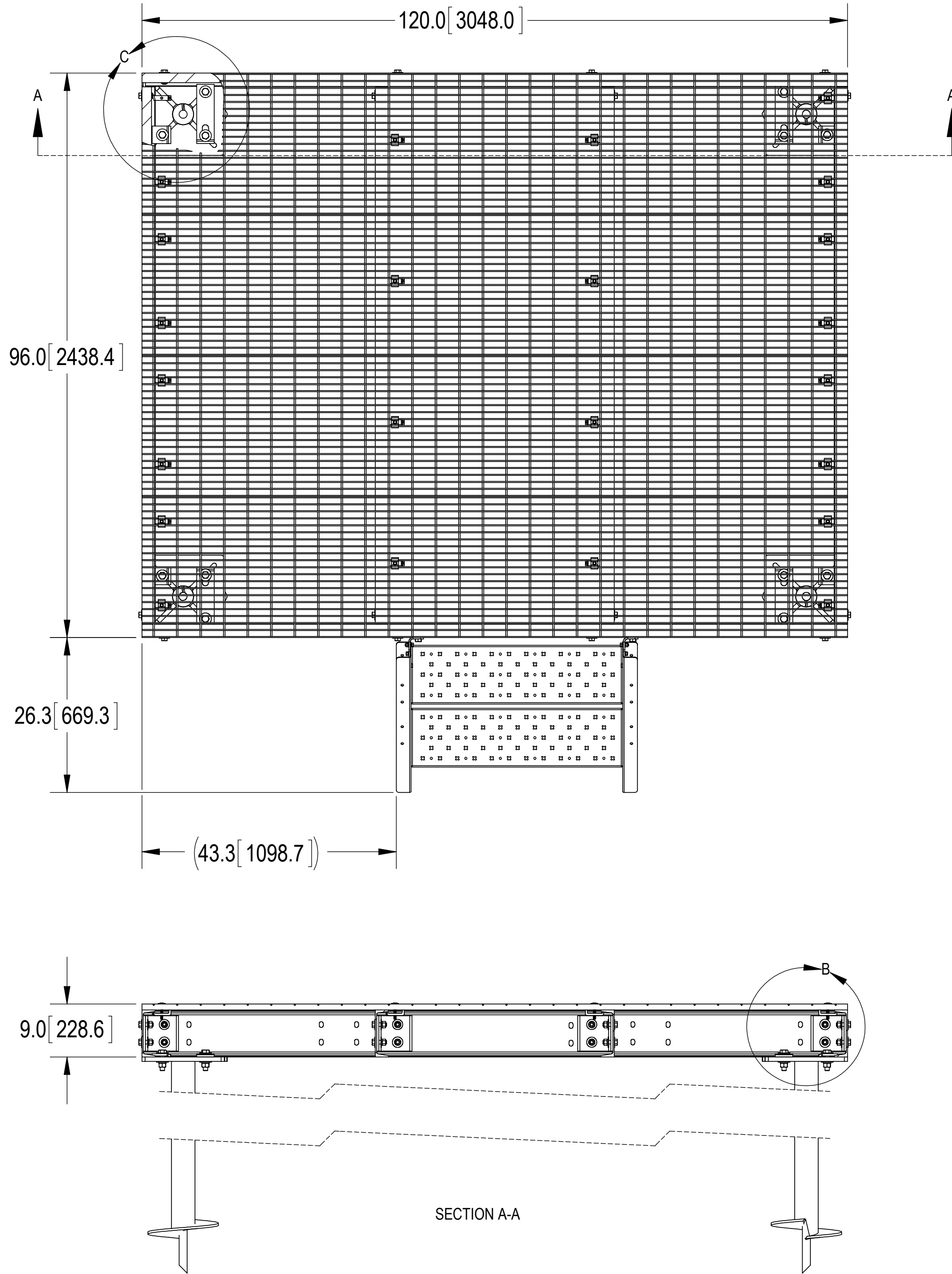
4

3

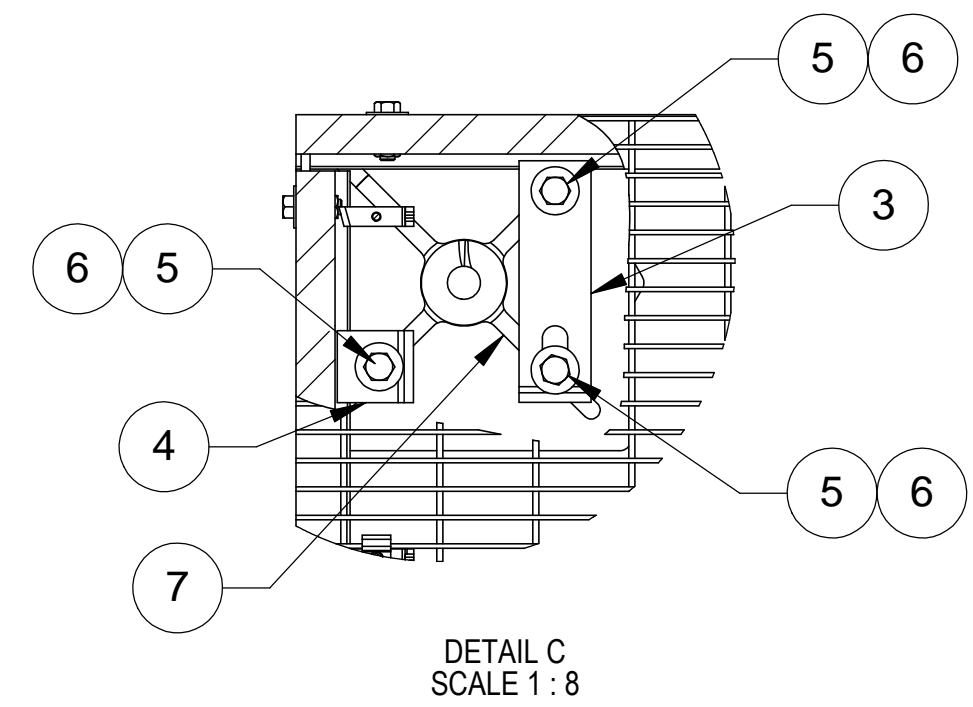
2

1

NOTES:  
1.0 ALL METRIC DIMENSIONS ARE IN BRACKETS.



TYPICAL FOR  
EACH CORNER



COMMSCOPE, INC. OF NORTH CAROLINA					
TITLE <b>8X10 PLATFORM, 2-STEP, (4) 7'X4" OD HLCL</b>					
SIZE <b>C</b>	SCALE <b>1:16</b>	DOCUMENT NO. <b>MTC39790704</b>			
DRAWING		VERSION	STATUS	REVISION	SHEET
				<b>B</b>	2 OF 4

4

3

2

1

NOTES:

D

D

C

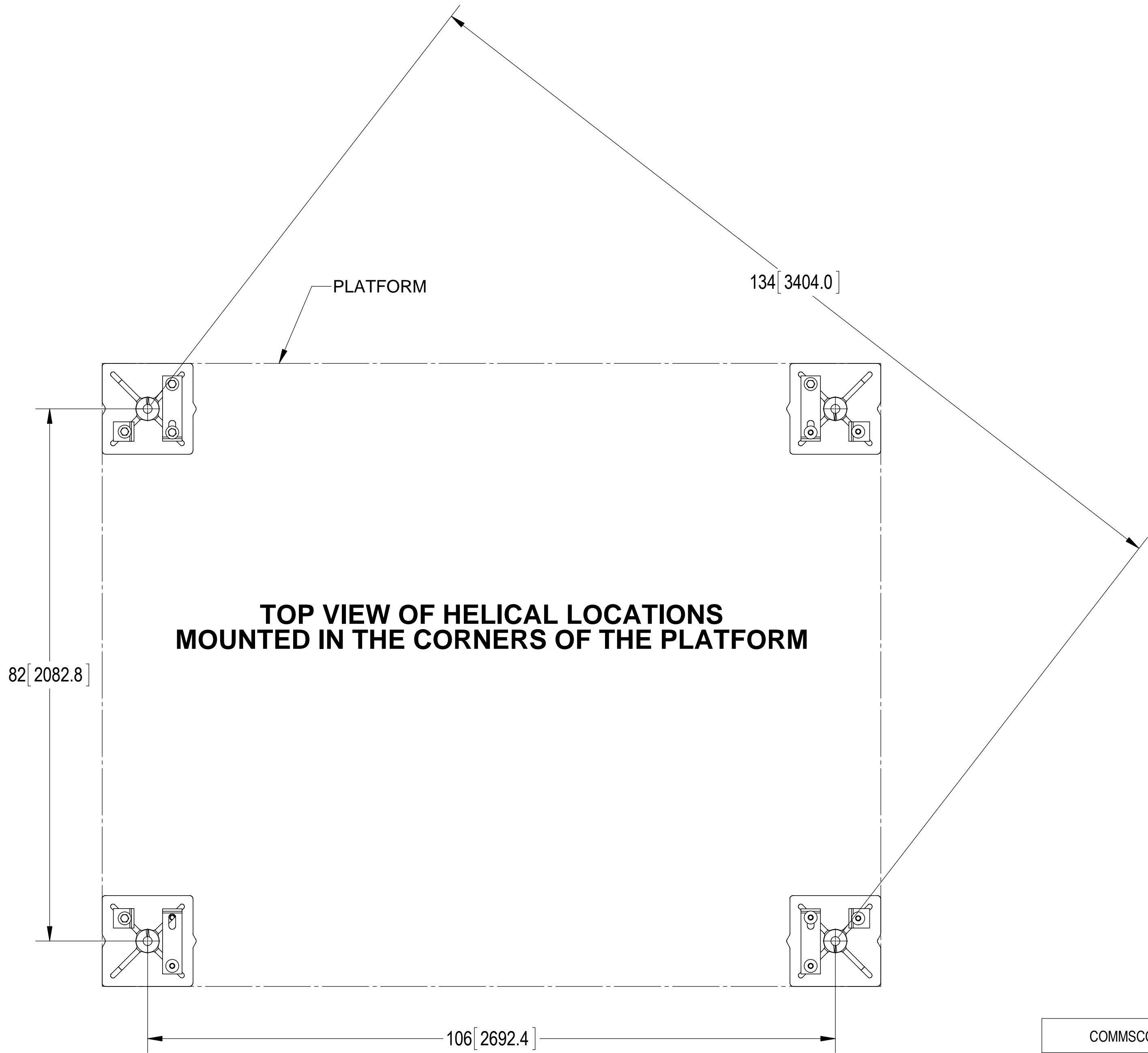
C

B

B

A

A



**TOP VIEW OF HELICAL LOCATIONS  
MOUNTED IN THE CORNERS OF THE PLATFORM**

COMMSCOPE, INC. OF NORTH CAROLINA

TITLE  
**8X10 PLATFORM, 2-STEP, (4) 7"X4" OD  
HLCL**

SIZE <b>C</b>	SCALE <b>1:12</b>	DOCUMENT NO. <b>MTC39790704</b>
------------------	----------------------	------------------------------------

DRAWING	VERSION	STATUS	REVISION	SHEET 3 OF 4
			<b>B</b>	

© 2015 CommScope, Inc. Confidential

4

3

2

1

4

3

2

1

NOTES:

D

D

C

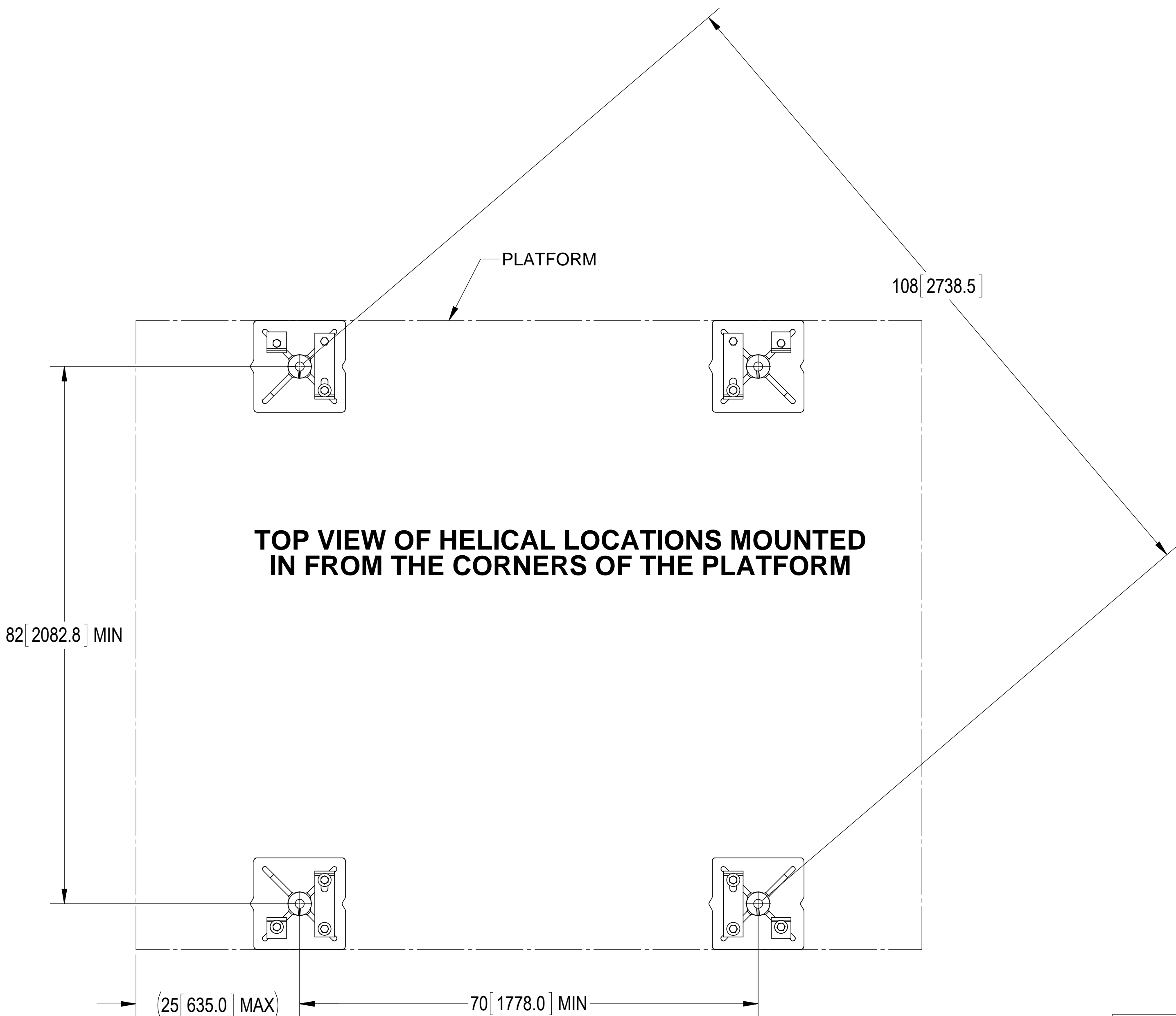
C

B

B

A

A



**TOP VIEW OF HELICAL LOCATIONS MOUNTED  
IN FROM THE CORNERS OF THE PLATFORM**

PLATFORM

108 [2738.5]

82 [2082.8] MIN

(25 [635.0] MAX)

70 [1778.0] MIN

COMMSCOPE, INC. OF NORTH CAROLINA

TITLE  
**8X10 PLATFORM, 2-STEP, (4) 7"X4" OD  
HLCL**

SIZE <b>C</b>	SCALE <b>1:12</b>	DOCUMENT NO. <b>MTC39790704</b>
------------------	----------------------	------------------------------------

DRAWING VERSION	STATUS	REVISION	SHEET 4 OF 4
		B	

© 2015 CommScope, Inc. Confidential

4

3

2

1