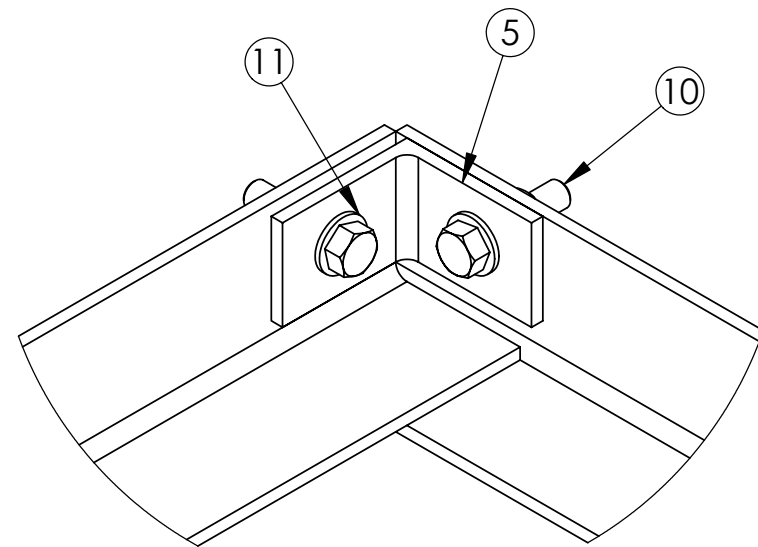
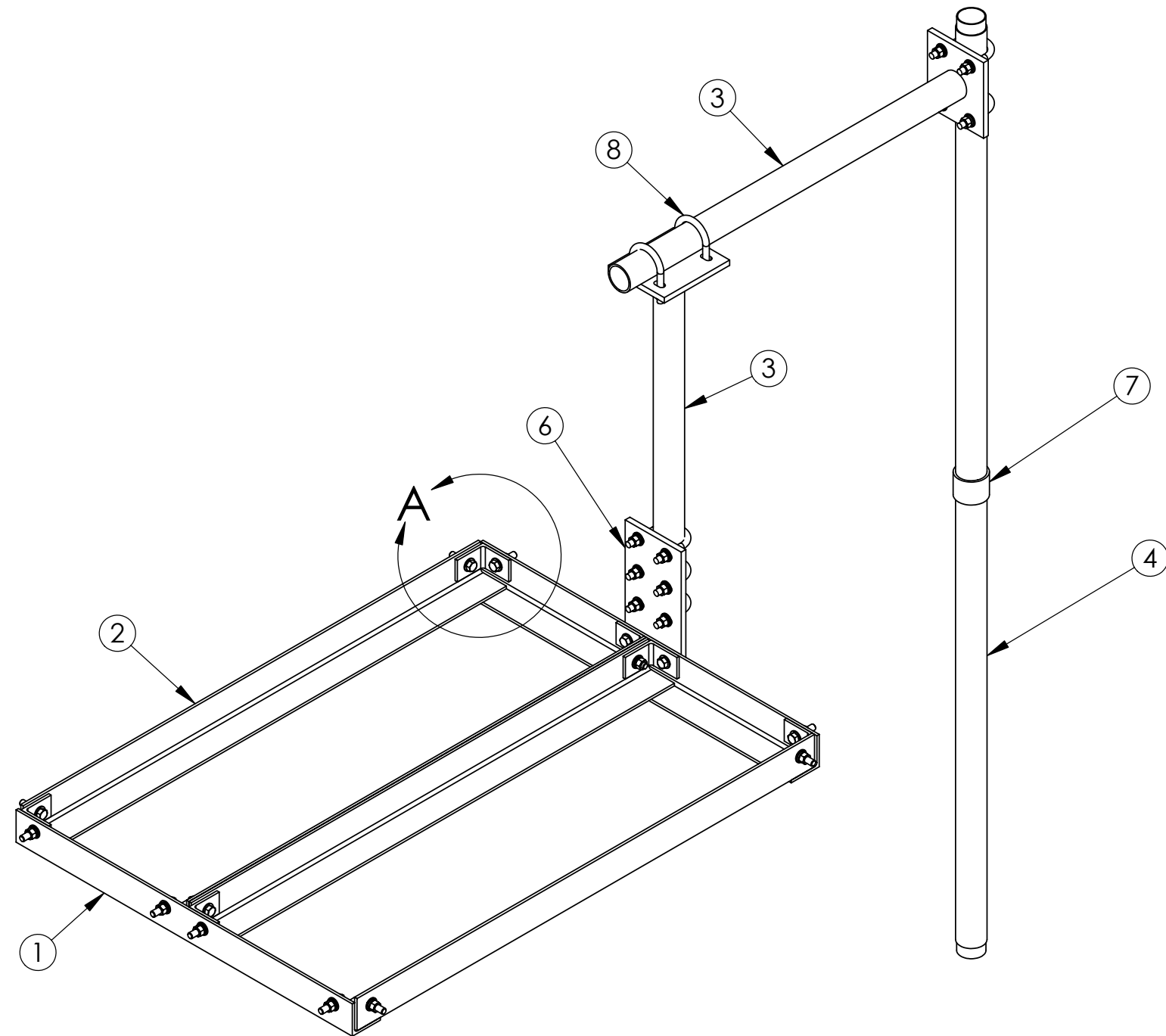


ITEM	PART NO.	DESCRIPTION	QTY.	WEIGHT
1	MTC9234.03	ALUM ANGLE .25 X 3 X 3	2	5.09 LBS
2	MTC9234.04	ALUM ANGLE .25 X 3 X 3	4	6.96 LBS
3	MTC9234.01	PIPE WELDMENT	2	5.75 LBS
4	MT423.01	EXTENSION PIPE 43.25" LG.	2	4.40 LBS
5	MTC9234H	HARDWARE KIT ITEM# 6-11	1	
6	MTC9234.06	ANGLE CLIP	8	0.26 LBS
7	MTC9234.05	.50 X 6 ALUM BAR	1	3.33 LBS
8	MT423.04	ALUMINUM PIPE COUPLER	1	0.43 LBS
9	GUB-4240	1/2" X 2-1/2" X 4" GALV U-BOLT KIT	7	0.56 LBS
10	GB-04205	1/2" X 2" GALV BOLT KIT	14	0.16 LBS
11	GWF-04	1/2" GALV FLAT WASHER	28	0.03 LBS


REVISIONS				
REV.	ZONE	DESCRIPTION	BY	DATE
A		INITIAL RELEASE	AW	06/23/06



DETAIL A



NOTES:
1. WELDING WORKMANSHIP PER AWS D1.1, TABLE 6.1.

<small>These drawings and specifications are the proprietary property of ANDREW CORPORATION and may be used only for the specific purpose authorized in writing by Andrew Corporation.</small> <small>ALL DIMENSIONS ARE IN INCHES U.O.S. TOLERANCES UNLESS OTHERWISE SPECIFIED:</small> .X = ± .06 ANGLES ± 2° .XX = ± .03 FRACTIONS ± 1/32 .XXX = ± .010 <small>REMOVE BURRS AND BREAK EDGES .005</small> DO NOT SCALE THIS PRINT	<small>DRAWN BY:</small> AW	<small>SHEET:</small> 1 of 1	<small>PART NUMBER:</small> RF-PM86
	<small>CHECKED BY:</small> TP	<small>SCALE:</small> NTS	<small>DESCRIPTION:</small> NON-PENETRATING PARAPET MOUNT
	<small>DATE:</small> 06/23/06	<small>MATERIAL:</small> ALUM	<small>DRAWING TYPE:</small> ASSEMBLY DRAWING
	<small>REVISION:</small> A	<small>FINISH:</small> NONE <small>WEIGHT:</small> 72.44 LBS	 ORLAND PARK, IL. 60462 U.S.A.