

# EGR-65D-R3N43



6-port sector antenna, 2x 694-862, 2x 880-960, 2x 694-960, 65° HPBW, 3 x RET

- Retractable tilt indicator rods
- All Internal RET actuators are connected in “Cascaded SRET” configuration
- Antenna shape optimized for wind load reduction

## General Specifications

<b>Antenna Type</b>	Sector
<b>Band</b>	Multiband
<b>Color</b>	Light Gray (RAL 7035)
<b>Grounding Type</b>	RF connector inner conductor and body grounded to reflector and mounting bracket
<b>Performance Note</b>	Outdoor usage
<b>Radome Material</b>	Fiberglass, UV resistant
<b>Reflector Material</b>	Aluminum
<b>RF Connector Interface</b>	4.3-10 Female
<b>RF Connector Location</b>	Bottom
<b>RF Connector Quantity, low band</b>	6
<b>RF Connector Quantity, total</b>	6

## Remote Electrical Tilt (RET) Information

<b>RET Hardware</b>	CommRET v2
<b>RET Interface</b>	8-pin DIN Female   8-pin DIN Male
<b>RET Interface, quantity</b>	2 female   2 male
<b>Input Voltage</b>	10–30 Vdc
<b>Internal RET</b>	Low band (3)
<b>Power Consumption, active state, maximum</b>	8 W
<b>Power Consumption, idle state, maximum</b>	1 W
<b>Protocol</b>	3GPP/AISG 2.0 (Single RET)

## Dimensions

<b>Width</b>	430 mm   16.929 in
--------------	--------------------

# EGR-65D-R3N43

<b>Depth</b>	197 mm   7.756 in
<b>Length</b>	2769 mm   109.016 in
<b>Net Weight, without mounting kit</b>	45.5 kg   100.31 lb

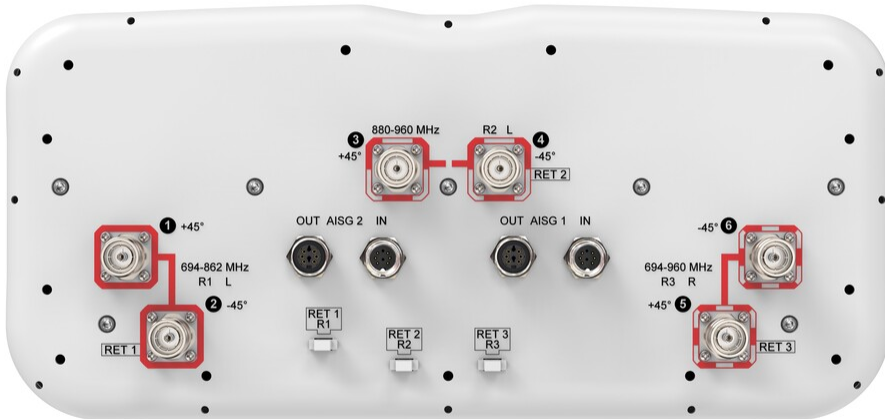
## Array Layout



Array	Freq (MHz)	Conns	RET (SRET)	AISG RET UID
R1	694-862	1-2	1	CPxxxxxxxxxxxxxxxxR1
R2	880-960	3-4	2	CPxxxxxxxxxxxxxxxxR2
R3	694-960	5-6	3	CPxxxxxxxxxxxxxxxxR3

Left Bottom Right (Sizes of colored boxes are not true depictions of array sizes)

## Port Configuration



## Electrical Specifications

# EGR-65D-R3N43

<b>Impedance</b>	50 ohm
<b>Operating Frequency Band</b>	694 – 862 MHz   694 – 960 MHz   880 – 960 MHz
<b>Polarization</b>	±45°
<b>Total Input Power, maximum</b>	700 W @ 50 °C

## Electrical Specifications

	<b>R1</b>	<b>R2</b>	<b>R3</b>
<b>Frequency Band, MHz</b>	<b>694–862</b>	<b>880–960</b>	<b>694–960</b>
<b>Gain, dBi</b>	15.8	16.3	16.7
<b>Beamwidth, Horizontal, degrees</b>	59	53	57
<b>Beamwidth, Vertical, degrees</b>	7.3	6.2	6.9
<b>Beam Tilt, degrees</b>	2–12	2–12	2–12
<b>USLS (First Lobe), dB</b>	16	16	14
<b>Front-to-Back Ratio at 180°, dB</b>	29	25	27
<b>Isolation, Cross Polarization, dB</b>	27	27	27
<b>Isolation, Inter-band, dB</b>	27	27	27
<b>VSWR   Return loss, dB</b>	1.5   14.0	1.5   14.0	1.5   14.0
<b>PIM, 3rd Order, 2 x 20 W, dBc</b>	-153	-153	-153
<b>Input Power per Port at 50°C, maximum, watts</b>	250	250	250

## Electrical Specifications, BASTA

	<b>694–862</b>	<b>880–960</b>	<b>694–960</b>
<b>Frequency Band, MHz</b>	<b>694–862</b>	<b>880–960</b>	<b>694–960</b>
<b>Gain by all Beam Tilts, average, dBi</b>	15.4	16	16
<b>Gain by all Beam Tilts Tolerance, dB</b>	±0.7	±0.6	±0.8
<b>Gain by Beam Tilt, average, dBi</b>	2°   15.4 6°   15.4 12°   15.3	2°   15.9 6°   16.1 12°   15.9	2°   16.0 6°   16.1 12°   16.0
<b>Beamwidth, Horizontal Tolerance, degrees</b>	±8.7	±3.8	±7.6
<b>Beamwidth, Vertical Tolerance, degrees</b>	±0.8	±0.4	±1
<b>USLS, beampeak to 20° above beampeak, dB</b>	13	13	12
<b>Front-to-Back Total Power at 180° ± 30°, dB</b>	23	22	23
<b>CPR at Boresight, dB</b>	24	24	23
<b>CPR at Sector, dB</b>	11	8	11

## Mechanical Specifications

<b>Wind Loading @ Velocity, frontal</b>	680.0 N @ 150 km/h (152.9 lbf @ 150 km/h)
-----------------------------------------	-------------------------------------------

# EGR-65D-R3N43

<b>Wind Loading @ Velocity, lateral</b>	347.0 N @ 150 km/h (78.0 lbf @ 150 km/h)
<b>Wind Loading @ Velocity, maximum</b>	1,020.0 N @ 150 km/h (229.3 lbf @ 150 km/h)
<b>Wind Loading @ Velocity, rear</b>	434.0 N @ 150 km/h (97.6 lbf @ 150 km/h)
<b>Wind Speed, maximum</b>	241 km/h (150 mph)

## Packaging and Weights

<b>Width, packed</b>	530 mm   20.866 in
<b>Depth, packed</b>	356 mm   14.016 in
<b>Length, packed</b>	2897 mm   114.055 in
<b>Weight, gross</b>	65.7 kg   144.844 lb

## Regulatory Compliance/Certifications

<b>Agency</b>	<b>Classification</b>
CHINA-ROHS	Below maximum concentration value
ISO 9001:2015	Designed, manufactured and/or distributed under this quality management system
REACH-SVHC	Compliant as per SVHC revision on <a href="http://www.commscope.com/ProductCompliance">www.commscope.com/ProductCompliance</a>
ROHS	Compliant
UK-ROHS	Compliant/Exempted



## Included Products

BSAMNT-4	-	Wide Profile Antenna Downtilt Mounting Kit for 2.4 - 4.5 in (60 - 115 mm) OD round members. Kit contains one scissor top bracket set and one bottom bracket set.
BSAMNT-M4	-	Middle Downtilt Mounting Kit for Long Antennas for 2.4 - 4.5 in (60 - 115 mm) OD round members. Kit contains one scissor bracket set.

## \* Footnotes

<b>Performance Note</b>	Severe environmental conditions may degrade optimum performance
-------------------------	-----------------------------------------------------------------