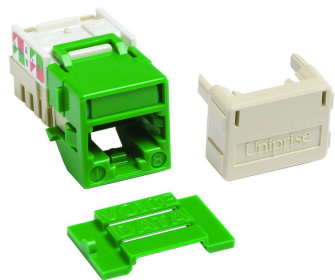


760149963 | UNJ10GT-GN



M-Series Modular Jack, RJ45, Cat6A Unshielded, Green

Product Classification

Regional Availability	North America
Portfolio	Uniprise®
Product Type	Modular jack
Product Brand	Ultra 10®
Product Series	UNJ Series

General Specifications

ANSI/TIA Category	6A
Cable Type	Unshielded
Color	Green
Conductor Type	Solid Stranded
Integrated Dust Cover Type	None
Termination Type	IDC
Wiring	T568A T568B

Dimensions

Height	20.32 mm 0.8 in
Width	20.32 mm 0.8 in
Depth	30.48 mm 1.2 in
Compatible Conductor Gauge, solid	22 AWG 24 AWG
Compatible Conductor Gauge, stranded	22 AWG 24 AWG

Electrical Specifications

Contact Resistance Variation, maximum	20 mOhm
--	---------

760149963 | UNJ10GT-GN

Contact Resistance, maximum	100 mOhm
Current Rating at Temperature	1.5 A @ 20 °C 1.5 A @ 68 °F
Dielectric Withstand Voltage, RMS, conductive surface	1,500 Vac @ 60 Hz
Dielectric Withstand Voltage, RMS, contact-to-contact	1,000 Vac @ 60 Hz
Insulation Resistance, minimum	500 MOhm
PoE Durability	Supports IEEE 802.3bt Type 4 (90 W) applications after 3000 plug to jack mating cycles

Material Specifications

Contact Plating Material	Precious metals
Material Type	Copper alloy High-impact, flame retardant, thermoplastic
Termination Contact Plating	Nickel

Mechanical Specifications

Plug Retention Force, minimum	133 N 29.9 lbf
Plug to Jack Mating Cycles	Complies to IEC 60603-7 series

Environmental Specifications

Operating Temperature	-10 °C to +60 °C (+14 °F to +140 °F)
Storage Temperature	-40 °C to +70 °C (-40 °F to +158 °F)
Relative Humidity	Up to 95%, non-condensing
Flammability Rating	UL 94 V-0
Safety Standard	UL cUL

Packaging and Weights

Packaging quantity	1
---------------------------	---

Regulatory Compliance/Certifications

Agency	Classification
CHINA-ROHS	Below maximum concentration value
ISO 9001:2015	Designed, manufactured and/or distributed under this quality management system
REACH-SVHC	Compliant as per SVHC revision on www.commscope.com/ProductCompliance
ROHS	Compliant
UK-ROHS	Compliant

