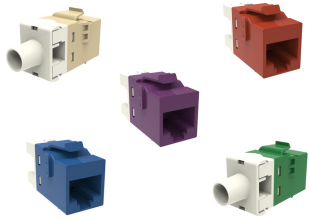


Base Product



KJ-Series Modular Jack, RJ45, Cat6 Unshielded

Product Classification

Regional Availability	Asia Australia/New Zealand EMEA Latin America
Portfolio	NETCONNECT®
Product Type	Modular jack
Product Series	KJ Series

General Specifications

ANSI/TIA Category	6
Cable Type	Unshielded
Conductor Type	Solid Stranded
Mounting	Hubbell® faceplates Leviton® faceplates Panduit® faceplates
Outlet Type	Keystone
Termination Tool	110 Punchdown tool SL Termination tool
Termination Type	IDC
Transmission Standards	ANSI/TIA-568-C.2 ISO/IEC 11801 Class E
Wiring	T568A T568B

Dimensions

Panel Cutout, recommended	14.79 x 19.31 mm (0.58 x 0.76 in)
Panel Thickness, recommended	1.6 mm 0.063 in
Height	16.13 mm 0.635 in
Width	16.48 mm 0.649 in
Depth	30.48 mm 1.2 in
Compatible Insulated Conductor Diameter, maximum	1.27 mm 0.05 in
Contact Plating Thickness	1.27 µm
Compatible Conductor Gauge, solid	24–22 AWG

2291216

Compatible Conductor Gauge, stranded

26–24 AWG

Electrical Specifications

Remote Powering

Fully supports the safe delivery of power over LAN cabling described by IEEE 802.3bt (Type 4) and complies with the unmating under electrical load requirements prescribed by IEC 60512-99-002

PoE Durability

Supports IEEE 802.3bt Type 4 (90 W) applications greater than 3000 plug to jack mating cycles

Material Specifications

Contact Base Material

Beryllium copper

Contact Plating Material

Gold

Material Type

Polycarbonate

Mechanical Specifications

Plug to Jack Mating Cycles

Complies to IEC 60603-7 series

Environmental Specifications

Flammability Rating

UL 94 V-0