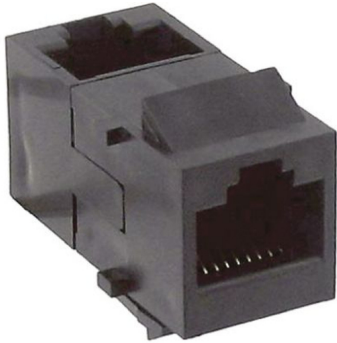


555051-1



RJ45 Coupler Assembly, category 3, 8-position, right-angle, black

OBSOLETE

This product was discontinued on: August 31, 2022

Product Classification

Regional Availability	Asia Latin America North America
Portfolio	CommScope®
Product Type	Modular jack coupler

General Specifications

ANSI/TIA Category	3
Cable Type	Unshielded
Color	Black
Conductor Type	Solid Stranded
Integrated Dust Cover Type	None
Outlet Type	Right angle
Termination Type	IDC
Transmission Standards	ANSI/TIA-568-C.2 ISO/IEC 11801 Class C
Wiring	T568A T568B

Dimensions

Panel Cutout, recommended	14.86 x 19.30 mm (0.59 x 0.76 in)
Panel Thickness, recommended	1.6 mm 0.063 in
Height	19.05 mm 0.75 in
Width	14.48 mm 0.57 in
Depth	30.73 mm 1.21 in

555051-1

Contact Plating Thickness 1.27 µm

Electrical Specifications

PoE Durability Supports IEEE 802.3bt Type 4 (90 W) applications after 3000 plug to jack mating cycles

Material Specifications

Contact Base Material Phosphor Bronze

Contact Plating Material Gold

Material Type Polycarbonate

Mechanical Specifications

Plug to Jack Mating Cycles Complies to IEC 60603-7 series

Environmental Specifications

Flammability Rating UL 94 V-0

Packaging and Weights

Packaging quantity 1

Regulatory Compliance/Certifications

Agency	Classification
CHINA-ROHS	Below maximum concentration value
REACH-SVHC	Compliant as per SVHC revision on www.commscope.com/ProductCompliance
ROHS	Compliant
UK-ROHS	Compliant

