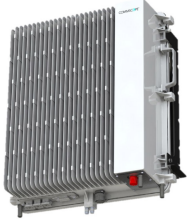


# 7830127-0002 | CAP MX F-DC



Carrier Access Point with 11-Band Support from 600 MHz to 2700 MHz for Medium Power Applications, Fiber Fed, DC Powered

## Product Classification

<b>Product Type</b>	Access point
<b>Product Brand</b>	ERA®
<b>Product Series</b>	CAP MX

## General Specifications

<b>Fan Kit</b>	Not included
<b>Fed Type</b>	Fiber fed
<b>Note</b>	Detailed Product Specifications are available. Please contact your local CommScope representative.
<b>Powering Type</b>	Internal DC powered

## Electrical Specifications

<b>License Band</b>	AWS 1700   B 70   BRS 2500   CEL 850   LMR 750   PCS 1900   SMR 800   USA 600   USA 700   USA 700E   USA 750   WCS 2300
<b>Voltage Range</b>	-60 to -36 Vdc

## Regulatory Compliance/Certifications

<b>Agency</b>	<b>Classification</b>
CHINA-ROHS	Above maximum concentration value
ROHS	Compliant/Exempted
UK-ROHS	Compliant/Exempted

