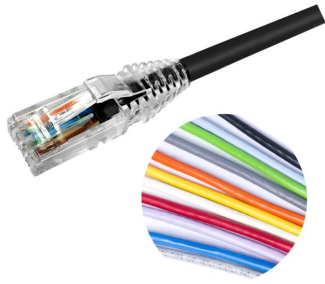


CO155E2



Category 5e U/UTP Patch Cord, RJ45 to RJ45, 4-pair, LSZH

Product Classification

Regional Availability	EMEA
Portfolio	CommScope®
Product Type	Twisted pair patch cord
Product Series	CO
Ordering Note	Cords < 1 m are valid elements for use in a channel or as an equipment interconnect but due to their limited length are not guaranteed to meet component compliance requirements that were developed to assess the quality of longer cords Cords > 1 m are authorized for use in channels and are an effective standalone method used to connect active devices

General Specifications

ANSI/TIA Category	5e
Cable Type	U/UTP (unshielded)
Conductor Type	Stranded
Interface, Connector A	RJ45 plug
Interface Feature, connector A	Standard
Interface, Connector B	RJ45 plug
Interface Feature, connector B	Standard
Jacket Color	Black Blue Green Orange Red Slate White Yellow
Pairs, quantity	4
Transmission Standards	IEC 61156-6 IEEE 802.3bt Type 4
Wiring	T568B

Dimensions

Cable Assembly Length Range (m)	1 – 30
Cable Assembly Length Range (ft)	1 – 100

CO155E2

Cable Assembly Length Range (cm)	15 – 999
Cable Assembly Length Range (in)	6 – 999
Diameter Over Jacket	5.97 mm 0.235 in
Compatible Conductor Gauge, stranded	24 AWG

Wiring Diagram

	Connector A	Connector B
Position 1	White/Orange	White/Orange
Position 2	Orange	Orange
Position 3	Lt. Green	Lt. Green
Position 4	Blue	Blue
Position 5	Lt. Blue	Lt. Blue
Position 6	Green	Green
Position 7	Lt. Brown	Lt. Brown
Position 8	Brown	Brown

Electrical Specifications

dc Resistance, maximum	0.3 ohm
Safety Voltage Rating	300 V

Ordering Tree

CO155E2

CO -

Outlet Color

9	0	Not applicable
	1	Black
	2	Blue
	3	Gray
	4	Green
	5	Ivory
	6	Orange
	7	Red
	8	White
	9	Yellow
	B	Lilac

Jacket Color

10	1	Black
	2	Light blue
	3	Dark gray
	4	Spring green
	5	Ivory
	6	Orange
	7	Red
	8	White
	9	Yellow
	B	Lilac
	C	Gray
	K	Pink
	L	Violet
	M	Green
	Z	Blue

UOM

11	F	Foot
	M	Meter
	N	Inch
	C	Centimeter

Length

12	XXX
----	-----

Notes

- Cords > 1m are authorized for use in channels and are an effective standalone method used to connect active devices
- Cords < 1m are also valid elements for use in a channel or as an equipment interconnect but due to their limited length are not guaranteed to meet component compliance requirements that were developed to assess the quality of longer cords

Material Specifications

Contact Plating Material

Gold in remating area | Nickel underplating

Material Type

Phosphor Bronze | Polycarbonate

Mechanical Specifications

Plug Insertion Life, minimum

750 times

Plug Retention Force, minimum

133 N | 29.9 lbf

Environmental Specifications

Operating Temperature

-10 °C to +60 °C (+14 °F to +140 °F)

Environmental Space

Low Smoke Zero Halogen (LSZH)

Flammability Rating

IEC 60332-3-22 | IEC 61034-2

Safety Standard

ETL | cETL

Packaging and Weights

Packaging quantity

1

Regulatory Compliance/Certifications

Agency

ISO 9001:2015

Classification

Designed, manufactured and/or distributed under this quality management system

C0155E2

