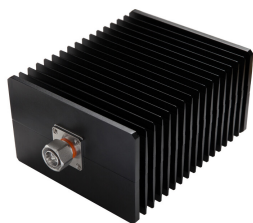


T-100-UW-43-M



Termination Load, 0–6000 MHz

Product Classification

Regional Availability	Asia Australia/New Zealand EMEA Latin America North America
Product Type	Termination Load

General Specifications

Device Type	Termination Load
Application	Indoor/Outdoor
Color	Black
Inner Contact Plating	Silver
Interface	4.3-10 Male
Outer Contact Plating	Trimetal

Dimensions

Height	89 mm 3.504 in
Width	140 mm 5.512 in
Length	190 mm 7.48 in

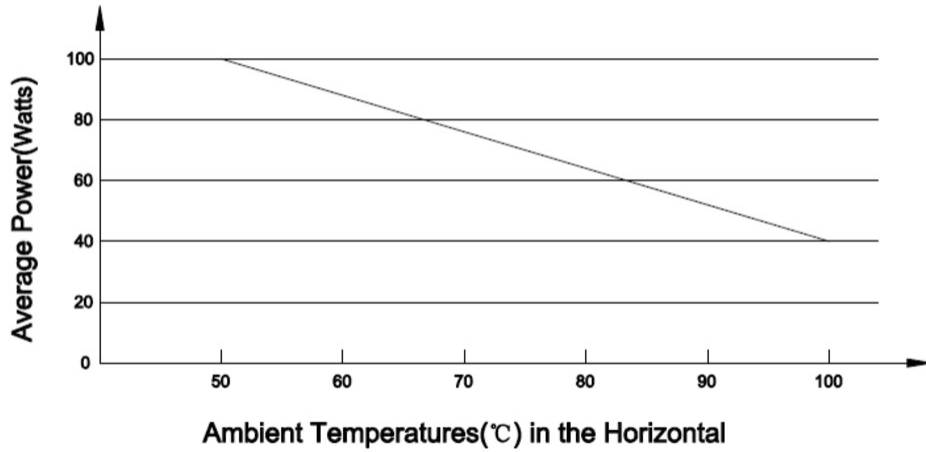
Electrical Specifications

Average Power, maximum	100 W
Impedance	50 ohm
Operating Frequency Band	0 – 6000 MHz
VSWR	1.2

Derating Curve

T-100-UW-43-M

T-100 Power Derating for ambient temperatures above 50°C



Environmental Specifications

Operating Temperature	-25 °C to +50 °C (-13 °F to +122 °F)
Relative Humidity	Up to 100%
Ingress Protection Test Method	IEC 60529:2001, IP65

Packaging and Weights

Height, packed	160 mm 6.299 in
Width, packed	235 mm 9.252 in
Length, packed	380 mm 14.961 in
Weight, gross	2.45 kg 5.401 lb
Weight, net	2 kg 4.409 lb

Regulatory Compliance/Certifications

Agency	Classification
CHINA-ROHS	Above maximum concentration value
ISO 9001:2015	Designed, manufactured and/or distributed under this quality management system
ROHS	Compliant/Exempted
UK-ROHS	Compliant/Exempted

T-100-UW-43-M

