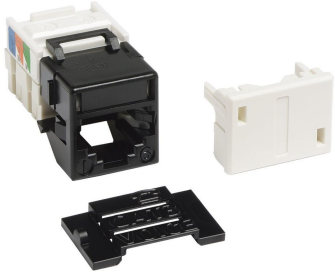


107322133 | M1AH-003 Module



M1 Modular 6 Conductor Telecommunications Outlet, black

OBSOLETE

This product was discontinued on: August 31, 2022

Replaced By:

108232695
MPS100E-003

PowerSUM MPS100E Category 5e U/UTP Information Outlet, black

Product Classification

Regional Availability

Asia | Australia/New Zealand | EMEA | Latin America | North America

Portfolio

CommScope®

Product Type

Modular jack

Product Series

M1AH

General Specifications

ANSI/TIA Category

3

Cable Type

Unshielded

Color

Black

Conductor Type

Solid | Stranded

Integrated Dust Cover Type

None

Mounting Note

Color matches with M-series Black Faceplates and Surface Mount Boxes

Outlet Type

M Series

Termination Type

IDC

Wiring

T568A | T568B

Dimensions

107322133 | M1AH-003 Module

Height	20.32 mm 0.8 in
Width	20.32 mm 0.8 in
Depth	30.48 mm 1.2 in
Compatible Conductor Gauge, solid	22 AWG 24 AWG
Compatible Conductor Gauge, stranded	22 AWG 24 AWG

Electrical Specifications

Contact Resistance Variation, maximum	20 mOhm
Contact Resistance, maximum	100 mOhm
Current Rating at Temperature	1.5 A @ 20 °C 1.5 A @ 68 °F
Dielectric Withstand Voltage, RMS, conductive surface	1,500 Vac @ 60 Hz
Dielectric Withstand Voltage, RMS, contact-to-contact	1,000 Vac @ 60 Hz
Insulation Resistance, minimum	501 MOhm

Material Specifications

Contact Plating Material	Precious metals
Material Type	Copper alloy High-impact, flame retardant, thermoplastic
Termination Contact Plating	Nickel

Mechanical Specifications

Plug Insertion Life, minimum	750 times
Plug Insertion Life, test plug	IEC 60603-7 compliant plug
Plug Retention Force, minimum	133 N 29.9 lbf

Environmental Specifications

Operating Temperature	-10 °C to +60 °C (+14 °F to +140 °F)
Storage Temperature	-40 °C to +70 °C (-40 °F to +158 °F)
Relative Humidity	Up to 95%, non-condensing
Flammability Rating	UL 94 V-0
Safety Standard	UL cUL

Packaging and Weights

Packaging quantity	1
---------------------------	---

Regulatory Compliance/Certifications

Agency	Classification
CHINA-ROHS	Below maximum concentration value
ISO 9001:2015	Designed, manufactured and/or distributed under this quality management system
REACH-SVHC	Compliant as per SVHC revision on www.commscope.com/ProductCompliance
ROHS	Compliant

