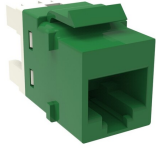


1499925-9 | SL110-6-HD-GN



SL-Series Modular Jack High Density, RJ45, Cat6 Unshielded, Green

OBSOLETE

This product was discontinued on: August 31, 2024

Replaced By:

1499925-GN
SL110-6-HD-GN

SL-Series Modular Jack High Density, RJ45, Cat6 Unshielded, Green

Product Classification

Regional Availability	Asia Latin America North America
Portfolio	NETCONNECT®
Product Type	Modular jack
Product Series	SL Series

General Specifications

ANSI/TIA Category	6
Application	Used in UDDM-SL-1U-48 type panels only
Cable Type	Unshielded
Color	Green
Conductor Type	Solid Stranded
Integrated Dust Cover Type	None
Outlet Feature	Inverted jack face
Outlet Type	Standard
Termination Tool	SL Termination tool
Termination Type	IDC
Transmission Standards	ANSI/TIA-568-C.2 ISO/IEC 11801 Class E
Wiring	T568A T568B

Dimensions

1499925-9 | SL110-6-HD-GN

Panel Thickness, recommended	1.6 mm 0.063 in
Height	16.26 mm 0.64 in
Width	14.48 mm 0.57 in
Depth	30.48 mm 1.2 in
Compatible Insulated Conductor Diameter, maximum	1.45 mm 0.057 in
Contact Plating Thickness	1.27 µm
Compatible Conductor Gauge, solid	24–22 AWG
Compatible Conductor Gauge, stranded	26–24 AWG

Electrical Specifications

PoE Durability	Supports IEEE 802.3bt Type 4 (90 W) applications greater than 3000 plug to jack mating cycles
-----------------------	---

Material Specifications

Contact Base Material	Beryllium copper
Contact Plating Material	Gold
Material Type	Polycarbonate

Mechanical Specifications

Plug to Jack Mating Cycles	Complies to IEC 60603-7 series
-----------------------------------	--------------------------------

Environmental Specifications

Flammability Rating	UL 94 V-0
----------------------------	-----------

Packaging and Weights

Packaging quantity	1
Packaging Type	Bag

Regulatory Compliance/Certifications

Agency	Classification
CHINA-ROHS	Below maximum concentration value
REACH-SVHC	Compliant as per SVHC revision on www.commscope.com/ProductCompliance
ROHS	Compliant
UK-ROHS	Compliant

