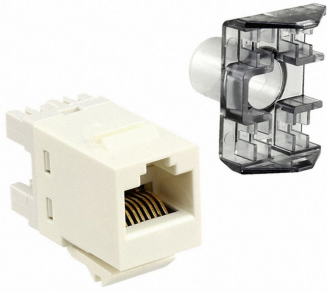


2-1375055-1



SL110 Series Modular Jack, RJ45, category 6, T568A/T568B, unshielded, without dust cover, bag of 25, light almond

Product Classification

Regional Availability	Asia Latin America
Portfolio	NETCONNECT®
Product Type	Modular jack
Product Series	SL Series

General Specifications

ANSI/TIA Category	6
Cable Type	Unshielded
Color	Almond
Conductor Type	Solid Stranded
Integrated Dust Cover Type	None
Mounting	SL Series faceplates and panels
Mounting Note	Color matches with SL-style Almond Faceplates and Surface Mount Boxes
Outlet Feature	Inverted jack face
Outlet Type	Standard
Termination Punchdowns, minimum	200 times
Termination Tool	SL Termination tool
Termination Type	IDC
Transmission Standards	ANSI/TIA-568.2-D ISO/IEC 11801 Class E
Wiring	T568A T568B

Dimensions

Panel Cutout, recommended	14.78 x 20.07 mm (0.58 x 0.79 in)
----------------------------------	-----------------------------------

2-1375055-1

Panel Thickness, recommended	1.6 mm 0.063 in
Height	16.13 mm 0.635 in
Width	14.48 mm 0.57 in
Depth	30.48 mm 1.2 in
Compatible Cable Diameter, maximum	5.8 mm 0.228 in
Compatible Insulated Conductor Diameter, maximum	1.45 mm 0.057 in
Contact Plating Thickness	1.27 μ m
Compatible Conductor Gauge, solid	24–22 AWG
Compatible Conductor Gauge, stranded	26–24 AWG

Electrical Specifications

Contact Resistance Variation, maximum	20 mOhm
Contact Resistance, maximum	100 mOhm
Current Rating at Temperature	1.5 A @ 20 °C 1.5 A @ 68 °F
Dielectric Withstand Voltage, RMS, conductive surface	1,500 Vac @ 60 Hz
Dielectric Withstand Voltage, RMS, contact-to-contact	1,000 Vac @ 60 Hz
Insulation Resistance, minimum	500 mOhm
Remote Powering	Fully supports the safe delivery of power over LAN cabling described by IEEE 802.3bt (Type 4) and complies with the unmating under electrical load requirements prescribed by IEC 60512-99-002
PoE Durability	Supports IEEE 802.3bt Type 4 (90 W) applications after 3000 plug to jack mating cycles
Safety Voltage Rating	150 Vac

Material Specifications

Contact Base Material	Beryllium copper
Contact Plating Material	Gold
Material Type	Polycarbonate
Termination Contact Plating	Tin

Mechanical Specifications

Plug Retention Force, minimum	50 N 11.24 lbf
Plug to Jack Mating Cycles	Complies to IEC 60603-7 series

2-1375055-1

Environmental Specifications

Operating Temperature	-10 °C to +60 °C (+14 °F to +140 °F)
Storage Temperature	-40 °C to +70 °C (-40 °F to +158 °F)
Flammability Rating	UL 94 V-0
Safety Standard	UL cUL

Packaging and Weights

Included	Strain relief cap
Packaging quantity	25
Packaging Type	Bag

Regulatory Compliance/Certifications

Agency	Classification
CHINA-ROHS	Below maximum concentration value
REACH-SVHC	Compliant as per SVHC revision on www.commscope.com/ProductCompliance
ROHS	Compliant
UK-ROHS	Compliant

