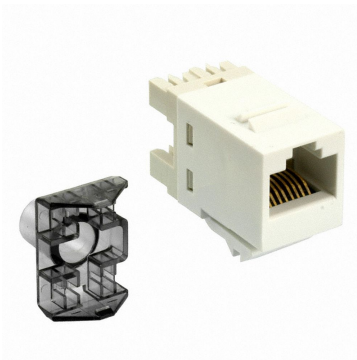


# 2-1375055-3



SL110 Series Modular Jack, RJ45, category 6, T568A/T568B, unshielded, without dust cover, bag of 25, white

**OBSOLETE**

This product was discontinued on: June 13, 2018

## Product Classification

**Regional Availability**

Asia | Latin America

**Portfolio**

NETCONNECT®

**Product Type**

Modular jack

**Product Series**

SL Series

## General Specifications

**ANSI/TIA Category**

6

**Cable Type**

Unshielded

**Color**

White

**Conductor Type**

Solid | Stranded

**Integrated Dust Cover Type**

None

**Mounting**

SL Series faceplates and panels

**Outlet Feature**

Inverted jack face

**Outlet Type**

Standard

**Termination Punchdowns, minimum**

200 times

**Termination Tool**

SL Termination tool

**Termination Type**

IDC

**Transmission Standards**

ANSI/TIA-568.2-D | ISO/IEC 11801 Class E

**Wiring**

T568A | T568B

# 2-1375055-3

---

## Dimensions

<b>Panel Cutout, recommended</b>	14.78 x 20.07 mm (0.58 x 0.79 in)
<b>Panel Thickness, recommended</b>	1.6 mm   0.063 in
<b>Height</b>	16.13 mm   0.635 in
<b>Width</b>	14.48 mm   0.57 in
<b>Depth</b>	30.48 mm   1.2 in
<b>Compatible Cable Diameter, maximum</b>	5.8 mm   0.228 in
<b>Compatible Insulated Conductor Diameter, maximum</b>	1.45 mm   0.057 in
<b>Contact Plating Thickness</b>	1.27 µm
<b>Compatible Conductor Gauge, solid</b>	24–22 AWG
<b>Compatible Conductor Gauge, stranded</b>	26–24 AWG

## Electrical Specifications

<b>Contact Resistance Variation, maximum</b>	20 mOhm
<b>Contact Resistance, maximum</b>	100 mOhm
<b>Current Rating at Temperature</b>	1.5 A @ 20 °C   1.5 A @ 68 °F
<b>Dielectric Withstand Voltage, RMS, conductive surface</b>	1,500 Vac @ 60 Hz
<b>Dielectric Withstand Voltage, RMS, contact-to-contact</b>	1,000 Vac @ 60 Hz
<b>Insulation Resistance, minimum</b>	500 mOhm
<b>Remote Powering</b>	Fully supports the safe delivery of power over LAN cabling described by IEEE 802.3bt (Type 4) and complies with the unmating under electrical load requirements prescribed by IEC 60512-99-002
<b>PoE Durability</b>	Supports IEEE 802.3bt Type 4 (90 W) applications after 3000 plug to jack mating cycles
<b>Safety Voltage Rating</b>	150 Vac

## Material Specifications

<b>Contact Base Material</b>	Beryllium copper
<b>Contact Plating Material</b>	Gold
<b>Material Type</b>	Polycarbonate
<b>Termination Contact Plating</b>	Tin

## Mechanical Specifications

<b>Plug Retention Force, minimum</b>	50 N   11.24 lbf
--------------------------------------	------------------

# 2-1375055-3

---

**Plug to Jack Mating Cycles**

Complies to IEC 60603-7 series

## Environmental Specifications

**Operating Temperature**

-10 °C to +60 °C (+14 °F to +140 °F)

**Flammability Rating**

UL 94 V-0

**Safety Standard**

UL | cUL

## Packaging and Weights

**Included**

Strain relief cap

**Packaging quantity**

25

**Packaging Type**

Bag

## Regulatory Compliance/Certifications

**Agency**

**Classification**

CHINA-ROHS

Below maximum concentration value

REACH-SVHC

Compliant as per SVHC revision on [www.commscope.com/ProductCompliance](https://www.commscope.com/ProductCompliance)

ROHS

Compliant

UK-ROHS

Compliant

