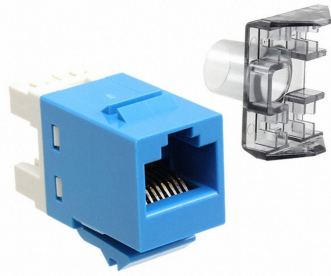


# 2-1375187-6



SL110 Series Modular Jack, 8-position, RJ45, category 6, with dust cover, bag of 25, blue

## Product Classification

<b>Regional Availability</b>	Asia   Australia/New Zealand   EMEA   Latin America
<b>Portfolio</b>	NETCONNECT®
<b>Product Type</b>	Modular jack
<b>Product Series</b>	SL Series

## General Specifications

<b>ANSI/TIA Category</b>	6
<b>Cable Type</b>	Unshielded
<b>Color</b>	Blue
<b>Conductor Type</b>	Solid   Stranded
<b>Integrated Dust Cover Type</b>	Hinged
<b>Mounting</b>	SL Series faceplates and panels
<b>Outlet Type</b>	Standard
<b>Termination Punchdowns, minimum</b>	200 times
<b>Termination Tool</b>	SL Termination tool
<b>Termination Type</b>	IDC
<b>Transmission Standards</b>	ANSI/TIA-568-C.2   ISO/IEC 11801 Class E
<b>Wiring</b>	T568A   T568B

## Dimensions

<b>Panel Cutout, recommended</b>	14.78 x 20.07 mm (0.58 x 0.79 in)
<b>Panel Thickness, recommended</b>	1.6 mm   0.063 in
<b>Height</b>	16.26 mm   0.64 in
<b>Width</b>	14.48 mm   0.57 in

# 2-1375187-6

---

<b>Depth</b>	30.48 mm   1.2 in
<b>Compatible Insulated Conductor Diameter, maximum</b>	1.45 mm   0.057 in
<b>Contact Plating Thickness</b>	1.27 µm
<b>Compatible Conductor Gauge, solid</b>	24–22 AWG
<b>Compatible Conductor Gauge, stranded</b>	26–24 AWG

## Electrical Specifications

<b>PoE Durability</b>	Supports IEEE 802.3bt Type 4 (90 W) applications after 3000 plug to jack mating cycles
<b>Safety Voltage Rating</b>	150 Vac

## Material Specifications

<b>Contact Base Material</b>	Beryllium copper
<b>Contact Plating Material</b>	Gold
<b>Material Type</b>	Polycarbonate

## Mechanical Specifications

<b>Plug Retention Force, minimum</b>	89 N   20.008 lbf
<b>Plug to Jack Mating Cycles</b>	Complies to IEC 60603-7 series

## Environmental Specifications

<b>Operating Temperature</b>	-40 °C to +70 °C (-40 °F to +158 °F)
<b>Flammability Rating</b>	UL 94 V-0
<b>Safety Standard</b>	CSA   cUL

## Packaging and Weights

<b>Included</b>	Shutter   Strain relief cap
<b>Packaging quantity</b>	25
<b>Packaging Type</b>	Bag

## Regulatory Compliance/Certifications

<b>Agency</b>	<b>Classification</b>
CHINA-ROHS	Below maximum concentration value
REACH-SVHC	Compliant as per SVHC revision on <a href="https://www.commscope.com/ProductCompliance">www.commscope.com/ProductCompliance</a>
ROHS	Compliant

# 2-1375187-6

---

UK-ROHS

Compliant

