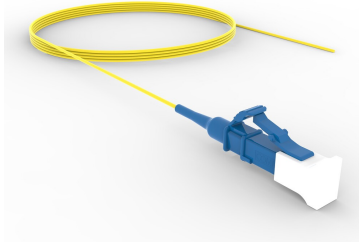


FAWLCUC01

Base Product



TeraSPEED® LC/UPC to Unconnectorized, Fiber Pigtail, 0.9 mm Tight Buffer

Product Classification

Regional Availability	Asia Australia/New Zealand China Europe India Latin America Middle East/Africa North America
Portfolio	CommScope®
Product Type	Fiber pigtail, unjacketed
Product Brand	SYSTIMAX InstaPATCH® 360
Product Series	FAW
Ordering Note	Minimum length may vary based on cable configuration

General Specifications

Color, boot A	Blue
Color, connector A	Blue
Interface, Connector A	LC/UPC
Jacket Color	Yellow
Total Fibers, quantity	1

Dimensions

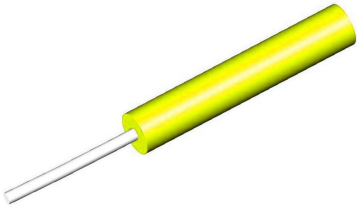
Cable Assembly Length Range (m)	1 – 20
Cable Assembly Length Range (ft)	1 – 66

Ordering Tree

FAWLCUC01

- 760038570 - TeraSPEED® 900µm Tight Buffered Fiber
- X-TB-8W-YL-F/G
- 860657283 - LC/UPC Connector, Singlemode, Blue

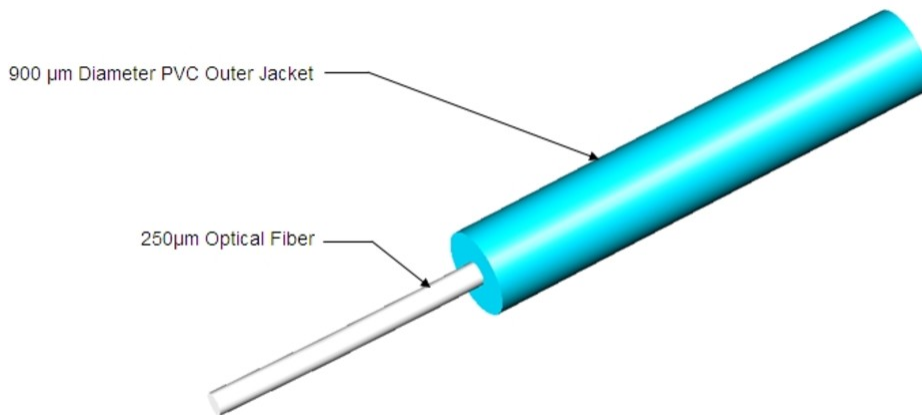
TeraSPEED® 900µm Tight Buffered Fiber



Product Classification

Regional Availability	Asia Australia/New Zealand EMEA Latin America North America
Portfolio	CommScope®
Product Type	Fiber indoor cable

Representative Image

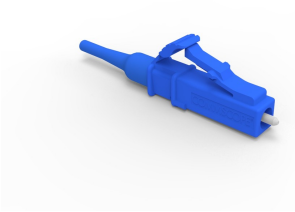


Regulatory Compliance/Certifications

Agency	Classification
CHINA-ROHS	Below maximum concentration value
ISO 9001:2015	Designed, manufactured and/or distributed under this quality management system
REACH-SVHC	Compliant as per SVHC revision on www.commscope.com/ProductCompliance
ROHS	Compliant
UK-ROHS	Compliant

760038570 | X-TB-8W-YL-F/G





LC/UPC Connector, Singlemode, Blue

Product Classification

Regional Availability	Asia Australia/New Zealand EMEA Latin America North America
Portfolio	CommScope®
Product Type	Fiber connector

General Specifications

Color, boot	Blue
Color, housing	Blue
Interface	LC/UPC

Dimensions

Length	39.6 mm 1.559 in
Compatible Cable Diameter	0.9 mm 0.035 in

Material Specifications

Ferrule Material	Zirconia
-------------------------	----------

Mechanical Specifications

Cable Retention Strength, maximum	1.00 lb @ 0 °
--	---------------

Optical Specifications

Fiber Mode	Singlemode
Insertion Loss Change, mating	0.2 dB
Optical Components Standard	ANSI/TIA-568. 3-D IEC 61753-1
Insertion Loss Change, temperature	0.2 dB
Insertion Loss, maximum	0.34 dB
Return Loss, minimum	50 dB

Regulatory Compliance/Certifications

Agency	Classification
CHINA-ROHS	Below maximum concentration value
REACH-SVHC	Compliant as per SVHC revision on www.commscope.com/ProductCompliance
ROHS	Compliant
UK-ROHS	Compliant



* Footnotes

Insertion Loss Change, mating TIA-568: Maximum insertion loss change after 500 matings

Insertion Loss Change, temperature Maximum insertion loss change from -10 °C to +60 °C (+14 °F to +140 °F)