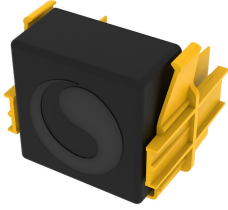


FGS-HMEC-CA



FiberGuide® Modified End Cap Kit for Hinged Cover, 2x2in, Black

Product Classification

Regional Availability	Asia Australia/New Zealand EMEA Latin America North America
Portfolio	CommScope®
Product Type	End cap
Product Brand	FiberGuide®
Product Series	FGS

General Specifications

Product Feature	Snap-together design
Color	Black
Orientation	Horizontal
Section Type	End cap

Dimensions

System Dimensions	102 mm x 102 mm (4 in x 4 in) 51 mm x 51 mm (2 in x 2 in)
--------------------------	---

Ordering Tree

FGS-HMEC-CA

FGS - HMEC - ¹⁰A - ¹¹Y

Section Size

10	A	4 x 4 in
	B	4 x 6 in
	C	2 x 2 in
	CA	2 x 2 in, for vertical slotted duct
	D	4 x 4 in, for vertical slotted duct
	E	4 x 2 in, for vertical slotted duct
	F	4 x 12 in
	G	2 x 6 in
	H	4 x 24 in
	M	4 x 18 in
	24	2 x 4 in, for vertical duct
	44	2 x 4 in, snap-on for vertical duct

Section Color

11	empty	black
	Y	yellow

Material Specifications

Material Type Engineering Thermoplastic

Environmental Specifications

Flammability Rating CSA S143 | UL 2024 | UL 94 V-0

Halogen Characteristics Blue Angel | TCO '99 | WEEE

Safety Standard CSA | UL

Packaging and Weights

Weight, net 0.083 kg | 0.183 lb

Regulatory Compliance/Certifications

Agency

CHINA-ROHS

REACH-SVHC

ROHS

UK-ROHS

Classification

Below maximum concentration value

Compliant as per SVHC revision on www.commscope.com/ProductCompliance

Compliant

Compliant

