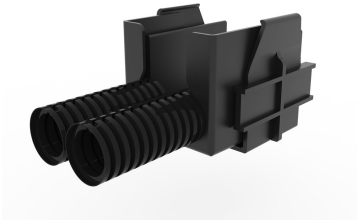


FGSB-KT03-C-15F



FiberGuide® Dual 7/8in Flex Tube Attachment, 2x2in, 15ft Length, Black

Product Classification

Regional Availability	Asia Australia/New Zealand EMEA Latin America North America
Portfolio	CommScope®
Product Type	Convoluted tube
Product Brand	FiberGuide®
Product Series	FGS

General Specifications

Product Feature	Round
Color	Black
Orientation	Vertical
Section Type	Adapter

Dimensions

Length	4572 mm 180 in
Tube Outer Diameter	22.35 mm 0.88 in
System Dimensions	51 mm x 51 mm (2 in x 2 in)

Environmental Specifications

Flammability Rating	CSA S143 UL 2024 UL 94 V-0
Halogen Characteristics	Blue Angel TCO '99 WEEE
Safety Standard	CSA UL

Packaging and Weights

Weight, net	0.051 kg 0.112 lb
--------------------	---------------------

Regulatory Compliance/Certifications

Agency	Classification
--------	----------------

FGSB-KT03-C-15F

CHINA-ROHS	Below maximum concentration value
REACH-SVHC	Compliant as per SVHC revision on www.commscope.com/ProductCompliance
ROHS	Compliant
UK-ROHS	Compliant

