

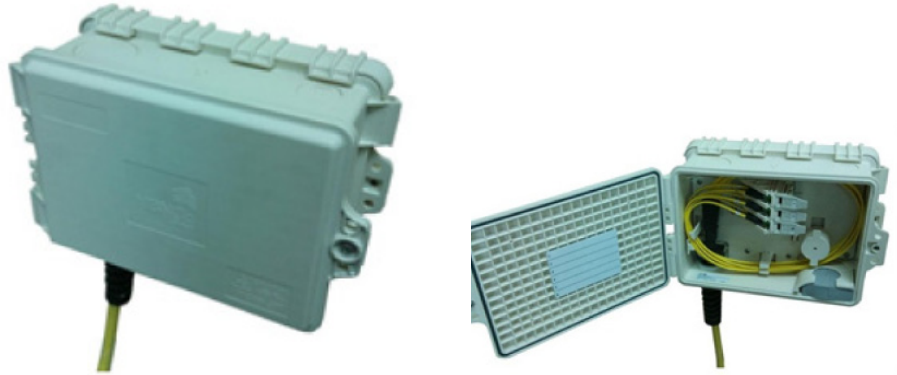
FCD

Fiber Collector Device

PERFORMANCE REQUIREMENTS

(1310 nm, 1490 nm, 1550 nm, 1625 nm):

- Insertion loss (intermated): 0.5 dB max.
- Return loss (intermated): 65dB min.

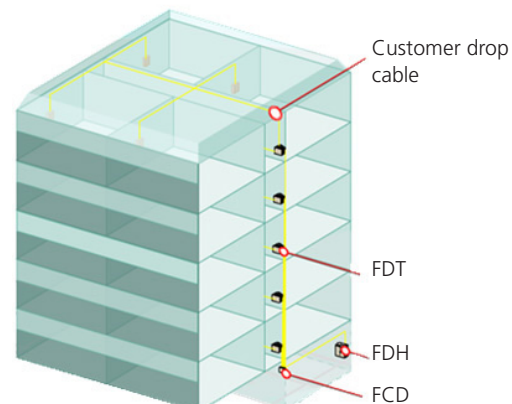


This specification summarizes the performance requirements for CommScope's Fiber Collector Device (FCD) terminated to a 72-fiber ribbon tail. This specification is focused on the FCD only.

The FCD Collector Box serves as zoned, intermediate distribution points within the MDU for designs using MPO cable stubs instead of splices.

The FCD is an internally rated wall box designed to facilitate the use with CommScope Rapid MDU products to provide a quick and cost-effective method of deploying an FTTP network within MDU environments. The FCD can be supplied in four possible configurations with a pre-installed stub cable of 50, 100, 300, 500 and 1000 ft. The stub cable is preterminated to 6 x 12F MPO connectors inside the FCD. The other end of the stub cable terminates into an FDH.

The FCD is supplied with a mounting bracket, which provides simple installation procedures and allows the FCD to be securely fastened to the wall of the building. Foam sealing technology is used within the FCD to provide dust protection to the internally housed connectors. Each MPO connector housed within the FCD utilizes a shuttered MPO through adapter mounted to a "sliding pack" patching panel. The sliding pack provides simple access to each individual connector while the spring-loaded dust cap protects the user from any potentially harmful invisible laser radiation.



General mechanical specifications

Parameter	Specification
Optical port connector	MPO (pinned)
MPO connector	Per GR-1435-CORE (high performance grade)
Cable	Indoor and Indoor/Outdoor OFNR
Cable color	Yellow or Black
Cable lengths	50, 100, 300, 500 and 1000 ft
Fiber	G.657.A2
Dimensions	(W)281 mm x (H)192 mm x (D)105 mm
Min bend radius loaded	300 mm
Min bend radius installed	155 mm
Tensile loads short term	2670 N
Fiber attenuation (1310 nm)	0.40 dB/km
Fiber attenuation (1550 nm)	0.30 dB/km
Color	Almond

Environmental specifications

Operating temperature	-10° C to 65° C
Temperature (storage)	-10° to +75° C
Temperature (installation)	-10° to +60° C
Sealing	IP54

Ordering information

Description	CommScope descriptor
Six-port FCD with 50 ft tail	FCD-72R-xx-MPO-50F
Six-port FCD with 100 ft tail	FCD-72R-xx-MPO-100
Six-port FCD with 300 ft tail	FCD-72R-xx-MPO-300
Six-port FCD with 500 ft tail	FCD-72R-xx-MPO-500
Six-port FCD with 1000 ft tail	FCD-72R-xx-MPO-1000

Note: xx = S2 for indoor OFNR cable or IO for Indoor/Outdoor OFNR cable.



commscope.com

Visit our website or contact your local CommScope representative for more information.

© 2020 CommScope, Inc. All rights reserved.

Unless otherwise noted, all trademarks identified by ® or ™ are registered trademarks, respectively, of CommScope, Inc. This document is for planning purposes only and is not intended to modify or supplement any specifications or warranties relating to CommScope products or services. CommScope is committed to the highest standards of business integrity and environmental sustainability with a number of CommScope's facilities across the globe certified in accordance with international standards, including ISO 9001, TL 9000, and ISO 14001.

Further information regarding CommScope's commitment can be found at www.commscope.com/About-Us/Corporate-Responsibility-and-Sustainability.

PA-1112291-EN (12/20)