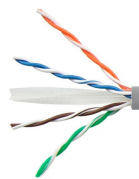


5-1427071-4 | CS30CM GRY C6 4/24 U/UTP RIB 305M



Copper Cable, category 6, 4 pair, UTP, CM rated, 24 AWG, 305 m reel in box, gray

Product Classification

Regional Availability	Asia Latin America
Portfolio	NETCONNECT®
Product Type	Twisted pair cable

General Specifications

Product Number	CS30CM
ANSI/TIA Category	6
Cable Component Type	Horizontal
Cable Type	U/UTP (unshielded)
Conductor Type, singles	Solid
Conductors, quantity	8
Jacket Color	Gray
Pairs, quantity	4
Transmission Standards	ABNT/NBR 14703 ANSI/TIA-568.2-D Anatel CENELEC EN 50288-6-1 ISO/IEC 11801 Class E

Dimensions

Cable Length	304.8 m 1000 ft
Diameter Over Insulated Conductor	0.978 mm 0.038 in
Diameter Over Jacket, nominal	5.588 mm 0.22 in
Conductor Gauge, singles	24 AWG

Electrical Specifications

Characteristic Impedance	100 ohm
dc Resistance Unbalance, maximum	5 %
dc Resistance, maximum	9.38 ohms/100 m 2.859 ohms/100 ft
Delay Skew, maximum	45 ns

5-1427071-4 | CS30CM GRY C6 4/24 U/UTP RIB 305M

Dielectric Strength, minimum	1500 Vac 2500 Vdc
Mutual Capacitance at Frequency	5.6 nF/100 m @ 1 kHz
Nominal Velocity of Propagation (NVP)	67 %
Operating Frequency, maximum	250 MHz
Operating Voltage, maximum	80 V
Propagation Delay, maximum	536 ns/100m @250MHz
Remote Powering	Fully complies with the recommendations set forth by IEEE 802.3bt (Type 4) for the safe delivery of power over LAN cable when installed according to ISO/IEC 14763-2, CENELEC EN 50174-1, CENELEC EN 50174-2 or TIA TSB-184-A

Material Specifications

Conductor Material	Bare copper
Insulation Material	Polyolefin
Jacket Material	PVC

Mechanical Specifications

Minimum Bend Radius Note	4 times the outer cable diameter
---------------------------------	----------------------------------

Environmental Specifications

Installation temperature	0 °C to +60 °C (-32 °F to +140 °F)
Operating Temperature	-20 °C to +60 °C (-4 °F to +140 °F)
Storage Temperature	-20 °C to +80 °C (-4 °F to +176 °F)
Environmental Space	Non-plenum
Flame Test Method	ABNT/NBR 14705 CM

Packaging and Weights

Cable weight	33.335 kg/km 22.4 lb/kft
Packaging Type	Reel in box

Regulatory Compliance/Certifications

Agency	Classification
CHINA-ROHS	Below maximum concentration value
REACH-SVHC	Compliant as per SVHC revision on www.commscope.com/ProductCompliance
ROHS	Compliant
UK-ROHS	Compliant

5-1427071-4 | CS30CM GRY C6 4/24 U/UTP RIB
305M

