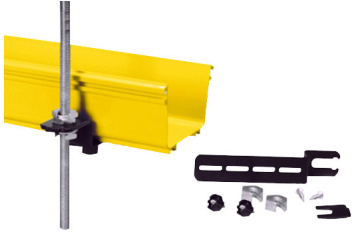


FGS-HETR

Base Product



FiberGuide® Existing Threaded Rod Bracket Kit

- Engineers and installers can benefit from the large suite of available FiberGuide design tools
- FiberGuide is an optical raceway system for central office, mobile switching center and data center applications
- FiberGuide maintains a minimum bend radius throughout the entire system, regardless the system size
- FiberGuide products are designed and manufactured to ensure total off-frame fiber cable protection

Available in the following system dimensions:

- 102 mm x 102 mm (4 in x 4 in)
- 102 mm x 152 mm (4 in x 6 in)
- 102 mm x 305 mm (4 in x 12 in)

Product Classification

Regional Availability	Asia Australia/New Zealand EMEA Latin America North America
Portfolio	CommScope®
Product Type	Support mounting kit
Product Brand	FiberGuide®
Product Series	FGS
Ordering Note	No threaded rods included - to be ordered separately

General Specifications

Color	Black
Orientation	Horizontal
Section Type	Bracket

Ordering Tree

FGS-HETR



For Section Size

9	empty	4 x 4 in, 4 x 6 in
	F	4 x 12 in

For Threaded Rod Size

10	1/2	1/2 in
	12MM	12 mm
	16MM	16 mm
	3/8	3/8 in
	5/8	5/8 in
	5/8-A	5/8 in, modified

Material Specifications

Material Type Steel

Packaging and Weights

Included Mounting hardware

Regulatory Compliance/Certifications

Agency

REACH-SVHC

Classification

Compliant as per SVHC revision on www.commscope.com/ProductCompliance