

# HLO017-000 | FOSC-ACC-A-TRAY-12-SMV60

---

FOSC® Fiber Optic Splice Tray Kit, includes 13 splice protection sleeves

## Product Classification

<b>Regional Availability</b>	North America
<b>Product Type</b>	Fiber splice tray
<b>Product Brand</b>	FOSC®
<b>Product Series</b>	FOSC 450

## General Specifications

<b>Application</b>	For use with FOSC-450 Fiber closures
--------------------	--------------------------------------

## Packaging and Weights

<b>Packaging quantity</b>	1
---------------------------	---

## Regulatory Compliance/Certifications

<b>Agency</b>	<b>Classification</b>
REACH-SVHC	Compliant as per SVHC revision on <a href="http://www.commscope.com/ProductCompliance">www.commscope.com/ProductCompliance</a>

## Included Products

369305-000 SMOUV-1120-01	- SMOUV Fiber Optic Splice Heat Shrink Protective Sleeve, pack of 100 pcs
-----------------------------	---



## SMOUV Fiber Optic Splice Heat Shrink Protective Sleeve, pack of 100 pcs

- Provide mechanical and environmental protection for fusion splices
- Optimal design for simple and correct fiber entrance
- Hot melt adhesive especially developed for optimal flow
- Transparent heat shrinkable tube for simple installation verification
- Short installation cycle and compatible with most common ovens

## Product Classification

<b>Regional Availability</b>	Asia   Australia/New Zealand   EMEA   Latin America   North America
<b>Product Type</b>	Fiber protection sleeve
<b>Product Brand</b>	SMOUV®
<b>Product Series</b>	SMOUV
<b>Ordering Note</b>	Minimum order quantity (MOQ) is 1,000 pcs

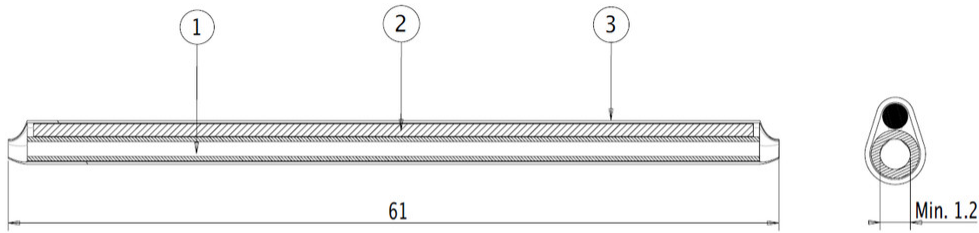
## General Specifications

<b>Application</b>	single fusion splices
<b>Splicing Type</b>	Heat shrink, single fiber fusion

## Dimensions

<b>Length</b>	61 mm   2.402 in
---------------	------------------

## Outline Drawing



- 1 Hot melt adhesive
- 2 Stainless steel rod
- 3 Heat shrinkable tube

## Environmental Specifications

**Environmental Space** Indoor | Outdoor

## Packaging and Weights

**Packaging quantity** 100

**Packaging Type** Bag | Carton

## Regulatory Compliance/Certifications

<b>Agency</b>	<b>Classification</b>
CHINA-ROHS	Below maximum concentration value
ISO 9001:2015	Designed, manufactured and/or distributed under this quality management system
REACH-SVHC	Compliant as per SVHC revision on <a href="http://www.commscope.com/ProductCompliance">www.commscope.com/ProductCompliance</a>
ROHS	Compliant
UK-ROHS	Compliant

