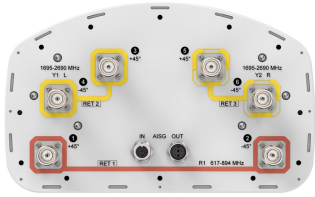


# FVV-65B-R3-V1



6-port sector antenna, 2x 617-894 and 4x 1695-2690 MHz, 65° HPBW, 3x RET, 600 MHz-Ready Antenna Technology

## General Specifications

<b>Antenna Type</b>	Sector
<b>Band</b>	Multiband
<b>Color</b>	Light Gray (RAL 7035)
<b>Grounding Type</b>	RF connector inner conductor and body grounded to reflector and mounting bracket
<b>Performance Note</b>	Outdoor usage
<b>Radome Material</b>	Fiberglass, UV resistant
<b>Reflector Material</b>	Aluminum
<b>RF Connector Interface</b>	4.3-10 Female
<b>RF Connector Location</b>	Bottom
<b>RF Connector Quantity, high band</b>	4
<b>RF Connector Quantity, low band</b>	2
<b>RF Connector Quantity, total</b>	6

## Remote Electrical Tilt (RET) Information

<b>RET Hardware</b>	CommRET v2
<b>RET Interface</b>	8-pin DIN Female   8-pin DIN Male
<b>RET Interface, quantity</b>	1 female   1 male
<b>Input Voltage</b>	10-30 Vdc
<b>Internal RET</b>	High band (2)   Low band (1)
<b>Power Consumption, active state, maximum</b>	8 W
<b>Power Consumption, idle state, maximum</b>	1 W
<b>Protocol</b>	3GPP/AISG 2.0

## Dimensions

<b>Width</b>	300 mm   11.811 in
--------------	--------------------

# FVV-65B-R3-V1

<b>Depth</b>	181 mm   7.126 in
<b>Length</b>	1828 mm   71.969 in
<b>Net Weight, without mounting kit</b>	20.7 kg   45.636 lb

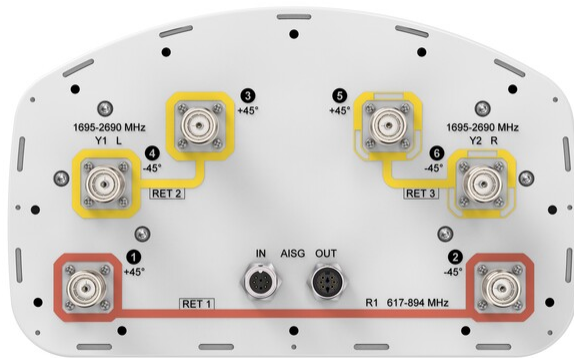
## Array Layout



Array ID	Frequency (MHz)	RF Connector	RET (SRET)	AISG No.	AISG RET UID
R1	617-894	1 - 2	1	AISG1	CPxxxxxxxxxxxxxxxxR1
Y1	1695-2690	3 - 4	2	AISG1	CPxxxxxxxxxxxxxxxxY1
Y2	1695-2690	5 - 6	3	AISG1	CPxxxxxxxxxxxxxxxxY2

(Sizes of colored boxes are not true depictions of array sizes)

## Port Configuration



## Electrical Specifications

<b>Impedance</b>	50 ohm
<b>Operating Frequency Band</b>	1695 – 2690 MHz   617 – 894 MHz
<b>Polarization</b>	±45°
<b>Total Input Power, maximum</b>	900 W @ 50 °C

# FVV-65B-R3-V1

## Electrical Specifications

Frequency Band, MHz	617-698	698-894	1695-1880	1850-1990	1920-2200	2300-2500	2500-2690
Gain, dBi	14.3	14.7	17.5	18.1	18.4	18.7	18.7
Beamwidth, Horizontal, degrees	71	70	66	64	64	63	60
Beamwidth, Vertical, degrees	14.5	12.2	5.6	5.3	5	4.4	4.2
Beam Tilt, degrees	2-14	2-14	2-12	2-12	2-12	2-12	2-12
USLS (First Lobe), dB	20	19	18	18	19	20	20
Front-to-Back Ratio at 180°, dB	25	29	37	35	31	28	32
Isolation, Cross Polarization, dB	25	25	25	25	25	25	25
Isolation, Inter-band, dB	28	28	28	28	28	28	28
VSWR   Return loss, dB	1.5 14.0	1.5 14.0	1.5 14.0	1.5 14.0	1.5 14.0	1.5 14.0	1.5 14.0
PIM, 3rd Order, 2 x 20 W, dBc	-150	-150	-150	-150	-150	-150	-150
Input Power per Port at 50°C, maximum, watts	250	250	200	200	200	200	200

## Electrical Specifications, BASTA

Frequency Band, MHz	617-698	698-894	1695-1880	1850-1990	1920-2200	2300-2500	2500-2690
Gain by all Beam Tilts, average, dBi	14	14.3	17	17.6	18.1	18.4	18.4
Gain by all Beam Tilts Tolerance, dB	±0.4	±0.5	±0.7	±0.5	±0.5	±0.4	±0.4
Beamwidth, Horizontal Tolerance, degrees	±2	±3.3	±3.5	±2.7	±2.9	±6.7	±7.5
Beamwidth, Vertical Tolerance, degrees	±1.3	±1.5	±0.4	±0.2	±0.3	±0.2	±0.2
USLS, beampeak to 20° above beampeak, dB		17	15	17	17	17	13
Front-to-Back Total Power at 180° ± 30°, dB	20	22	24	26	26	24	27
CPR at Boresight, dB	16	15	17	18	19	18	16
CPR at Sector, dB	9	9	8	9	6	4	3

## Mechanical Specifications

Effective Projective Area (EPA), frontal	0.26 m <sup>2</sup>   2.799 ft <sup>2</sup>
Effective Projective Area (EPA), lateral	0.22 m <sup>2</sup>   2.368 ft <sup>2</sup>

# FVV-65B-R3-V1

---

<b>Wind Loading @ Velocity, frontal</b>	278.0 N @ 150 km/h (62.5 lbf @ 150 km/h)
<b>Wind Loading @ Velocity, lateral</b>	230.0 N @ 150 km/h (51.7 lbf @ 150 km/h)
<b>Wind Loading @ Velocity, maximum</b>	537.0 N @ 150 km/h (120.7 lbf @ 150 km/h)
<b>Wind Loading @ Velocity, rear</b>	282.0 N @ 150 km/h (63.4 lbf @ 150 km/h)
<b>Wind Speed, maximum</b>	241 km/h (150 mph)

## Packaging and Weights

<b>Width, packed</b>	560 mm   22.047 in
<b>Depth, packed</b>	337 mm   13.268 in
<b>Length, packed</b>	1973 mm   77.677 in
<b>Weight, gross</b>	27 kg   59.525 lb

## Regulatory Compliance/Certifications

<b>Agency</b>	<b>Classification</b>
CHINA-ROHS	Above maximum concentration value
ISO 9001:2015	Designed, manufactured and/or distributed under this quality management system
ROHS	Compliant/Exempted
UK-ROHS	Compliant/Exempted



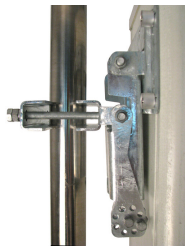
## Included Products

BSAMNT-3	–	Wide Profile Antenna Downtilt Mounting Kit for 2.4 - 4.5 in (60 - 115 mm) OD round members. Kit contains one scissor top bracket set and one bottom bracket set.
----------	---	--

## \* Footnotes

<b>Performance Note</b>	Severe environmental conditions may degrade optimum performance
-------------------------	---

# BSAMNT-3



Wide Profile Antenna Downtilt Mounting Kit for 2.4 - 4.5 in (60 - 115 mm) OD round members. Kit contains one scissor top bracket set and one bottom bracket set.

## Product Classification

**Product Type** Downtilt mounting kit

## General Specifications

**Application** Outdoor

**Color** Silver

## Dimensions

**Compatible Diameter, maximum** 115 mm | 4.528 in

**Compatible Diameter, minimum** 60 mm | 2.362 in

**Weight, net** 6.2 kg | 13.669 lb

## Material Specifications

**Material Type** Galvanized steel

## Packaging and Weights

**Included** Brackets | Hardware

**Packaging quantity** 1

**Weight, gross** 6.4 kg | 14.11 lb

## Regulatory Compliance/Certifications

Agency	Classification
CE	Compliant with the relevant CE product directives
CHINA-ROHS	Below maximum concentration value
ISO 9001:2015	Designed, manufactured and/or distributed under this quality management system
REACH-SVHC	Compliant as per SVHC revision on <a href="http://www.commscope.com/ProductCompliance">www.commscope.com/ProductCompliance</a>
ROHS	Compliant
UK-ROHS	Compliant

# BSAMNT-3

---

