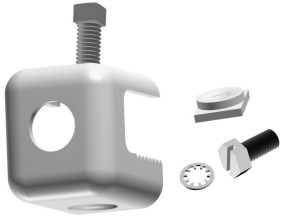


# 252130

---



Angle Adapter, universal, 3/8 in tapped hole (insert included)

## Product Classification

<b>Product Type</b>	Adapter
<b>Product Brand</b>	I-Line
<b>Ordering Note</b>	ANDREW® non-standard product

## General Specifications

<b>Adapter Type</b>	Angle adapter
<b>Mounting</b>	3/8 in tapped hole

## Dimensions

<b>Inside Width</b>	16.002 mm   0.63 in
<b>Outside Width</b>	38.1 mm   1.5 in
<b>Inside Length</b>	16.002 mm   0.63 in
<b>Outside Length</b>	46.99 mm   1.85 in
<b>Material Thickness</b>	2.972 mm   0.117 in

## Material Specifications

<b>Material Type</b>	Stainless steel
----------------------	-----------------

## Mechanical Specifications

<b>Installation Torque, maximum</b>	13 ft lb   17.626 N-m
<b>Installation Torque, minimum</b>	11 ft lb   14.914 N-m
<b>Maximum Loading</b>	Double stack, 1-5/8 in cable

## Packaging and Weights

<b>Height, packed</b>	23.2 cm   9.134 in
<b>Width, packed</b>	13.3 cm   5.236 in
<b>Length, packed</b>	10.5 cm   4.134 in

# 252130

---

**Packaging quantity** 10  
**Weight, gross** 0.11 kg | 0.243 lb

## Regulatory Compliance/Certifications

<b>Agency</b>	<b>Classification</b>
REACH-SVHC	Compliant as per SVHC revision on <a href="http://www.commscope.com/ProductCompliance">www.commscope.com/ProductCompliance</a>
ROHS	Compliant
UK-ROHS	Compliant

## Included Products

UAAI – Universal Angle Adapter Insert