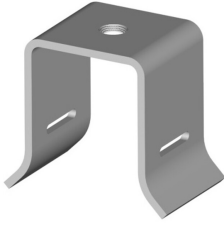


294561



Stand-off Adapter, 3/8 in tapped hole. Provides 2 inches of standoff from round member.

Product Classification

Product Type	Adapter
Product Brand	I-Line
Ordering Note	ANDREW® non-standard product

General Specifications

Adapter Type	Stand-off adapter
Mounting	3/8 in tapped hole

Dimensions

Inside Width	44.45 mm 1.75 in
Outside Width	57.15 mm 2.25 in
Inside Length	60.452 mm 2.38 in
Outside Length	38.1 mm 1.5 in
Material Thickness	2.667 mm 0.105 in

Material Specifications

Material Type	Stainless steel
----------------------	-----------------

Mechanical Specifications

Installation Torque, maximum	15 ft lb 20.337 N-m
Installation Torque, minimum	11 ft lb 14.914 N-m
Maximum Loading	Double stack, 1-5/8 in cable

Packaging and Weights

Height, packed	17 cm 6.693 in
Width, packed	13 cm 5.118 in
Length, packed	10 cm 3.937 in

294561

Packaging quantity 10
Weight, gross 1.7 kg | 3.748 lb

Regulatory Compliance/Certifications

Agency	Classification
REACH-SVHC	Compliant as per SVHC revision on www.commscope.com/ProductCompliance
ROHS	Compliant
UK-ROHS	Compliant