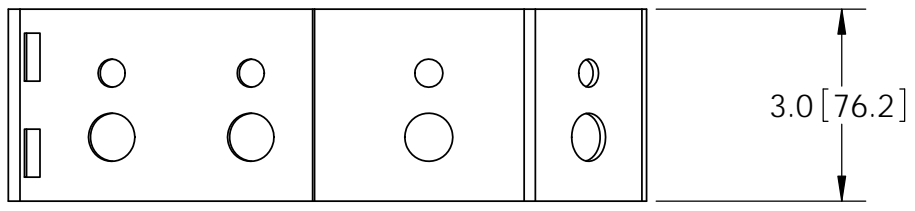
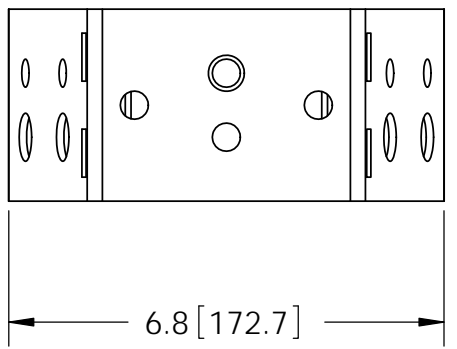
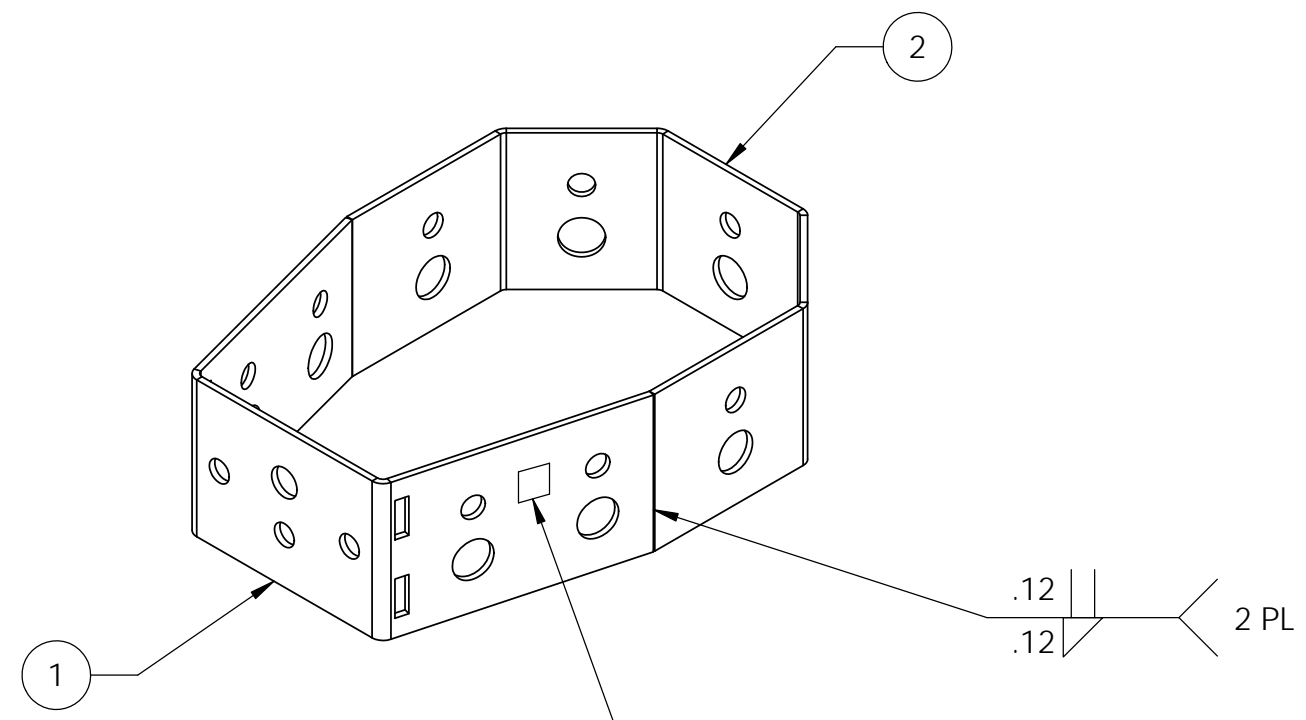
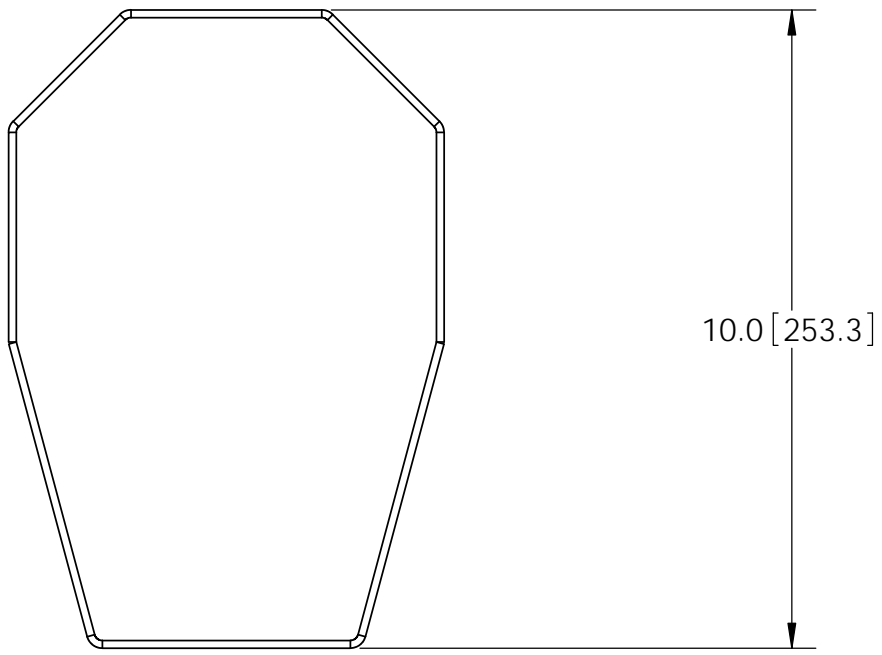



ITEM	PART NO.	DESCRIPTION	QTY.	WEIGHT
1	CSB03	CLUSTER SUPPORT BRACKET "A"	1	1.27 LBS
2	CSB04	CLUSTER SUPPORT BRACKET "B"	1	1.40 LBS

REVISIONS				
REV.	ZONE	DESCRIPTION	BY	DATE
A		INITIAL RELEASE	MSM	07/13/09
B	8000015711	ADDED WELD TAG LOCATION	DRR	08/18/16



- NOTES:
1. ALL METRIC DIMENSIONS ARE IN BRACKETS.
  2. STAMP PART IDENTIFICATION NUMBER.
  3. WELDING WORKMANSHIP PER AWS D1.1, TABLE 6.1.

<small>These drawings and specifications are the proprietary property of ANDREW CORPORATION and may be used only for the specific purpose authorized in writing by Andrew Corporation.</small> ALL DIMENSIONS ARE IN INCHES U.O.S. TOLERANCES UNLESS OTHERWISE SPECIFIED: .X = ± .12      ANGLES      ±2° .XX = ± .06      FRACTIONS      ±1/32 .XXX = ± .03 REMOVE BURRS AND BREAK EDGES .005 DO NOT SCALE THIS PRINT	DRAWN BY: MSM	SHEET: 1 of 1	PART NUMBER: B2211
	CHECKED BY: TP	SCALE: NTS	DESCRIPTION: CLUSTER SUPPORT BRACKET, LARGE
	DATE: 07/13/09	MATERIAL: A568	DRAWING TYPE: ASSEMBLY DRAWING
	REVISION: <b>B</b>	FINISH: GALV A123	 WESTCHESTER, IL. 60154 U.S.A.
	WEIGHT: 2.67 LBS		