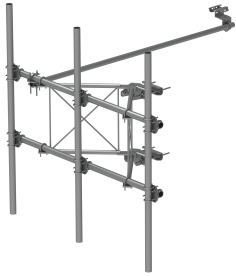


MTC3975083



Custom G2 Series High Capacity Sector Frame, 8 ft x2.88 in OD face pipes, includes three 96 in x2.88 OD antenna pipes

Product Classification

Portfolio	CommScope®
Product Type	High capacity Tower sector frame
Ordering Note	CommScope® non-standard product
Warranty	One year

General Specifications

Mounting	Angle 90°, 152.4 mm (6 in) Straight or tapered legs up to 203.2 mm (8 in) OD
Patent Number	Patent pending
Pipe, quantity	3
Sectors, quantity	1
Tower Taper	Non-tapered Tapered

Dimensions

Height	2,438.4 mm 96 in
Face Width	2.438 m 8 ft
Pipe Length	2,438.4 mm 96 in
Face Support Pipe Diameter	73.152 mm 2.88 in
Mounting Diameter, maximum	222.25 mm 8.75 in
Mounting Diameter, minimum	38.1 mm 1.5 in
Pipe Outer Diameter	73.152 mm 2.88 in
Stand-off Distance	889 mm 35 in

Material Specifications

Material Type	Hot dip galvanized steel
----------------------	--------------------------

MTC3975083

Mechanical Specifications

Wind Rating	For Specifications, please contact steelproducts@commscope.com or call 800-255-1479
Wind Rating Test Method	TIA/EIA-222-G

Packaging and Weights

Included	Frame Pipe mounts Plain end pipes (3) Stiff arm Tower attachment
Packaging quantity	1
Weight, net	159.665 kg 352 lb

* Footnotes

Warranty	For more information, please consult our Product Warranty guidelines
Wind Rating	BWS—Base Wind Speed; FBC—Florida Building Code