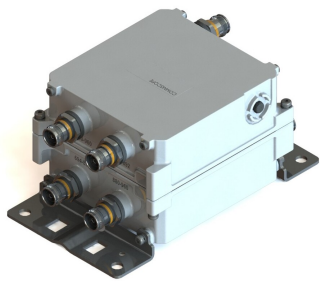


# E14F06P45



Twin Diplexer,694–862 MHz/880–960 MHz, DC SMART bypass all, with 4.3-10 connectors

- New 4.3-10 connectors for improved PIM performance and size reduction
- Minimal Insertion Loss
- DC/AISG SMART bypass functionality

## Product Classification

**Product Type** Diplexer

## General Specifications

**Color** Gray

**Modularity** 2-Twin

**Mounting** Pole | Wall

**Mounting Pipe Hardware** Band clamps (2)

**RF Connector Interface** 4.3-10 Female

**RF Connector Interface Body Style** Long neck

## Dimensions

**Height** 110 mm | 4.331 in

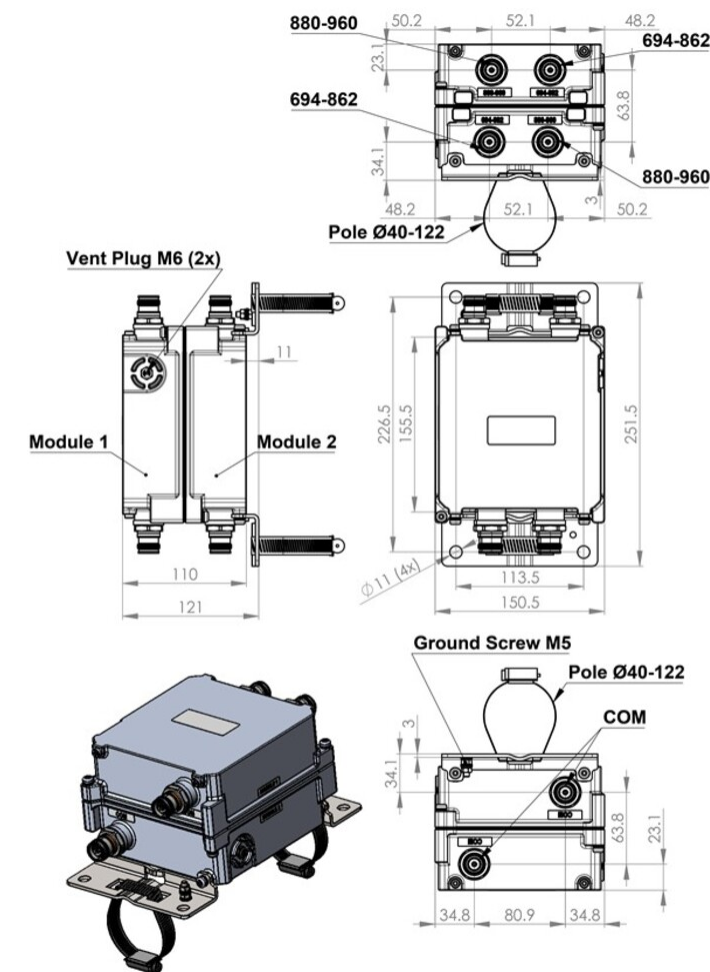
**Width** 150.5 mm | 5.925 in

**Depth** 155.5 mm | 6.122 in

**Mounting Pipe Diameter Range** 43–122 mm

## Outline Drawing

# E14F06P45



## Electrical Specifications

Impedance	50 ohm
License Band, Band Pass	APT 700   CEL 900   EDD 800   LMR 750   LMR 800   LMR 900   USA 700   USA 750

## Electrical Specifications, dc Power/Alarm

dc/AISG Pass-through, combiner	dc Smart Bypass
dc/AISG Pass-through, demultiplexer	dc Smart Bypass
Lightning Surge Current	5 kA
Lightning Surge Current Waveform	8/20 waveform

## Electrical Specifications

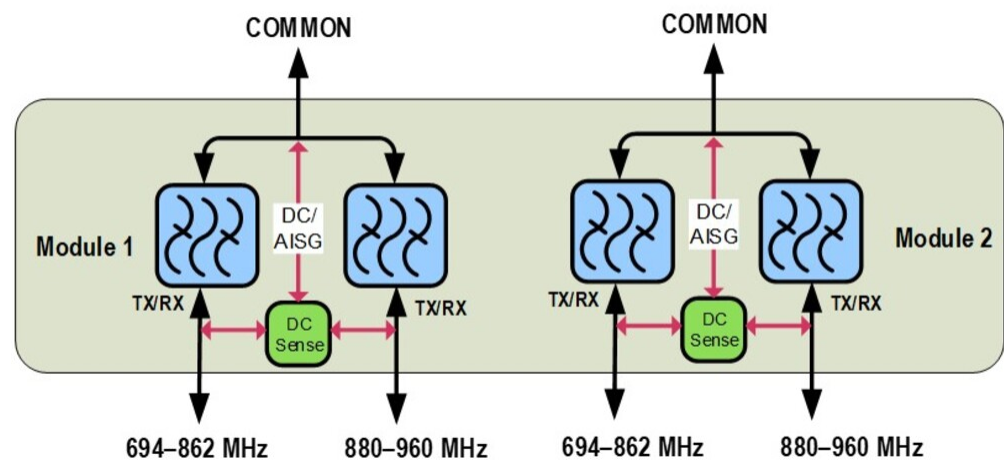
# E14F06P45

Sub-module	1   2	1   2
Branch	1	2
Port Designation	PORT 1 694-862	PORT 2 880-960
License Band	APT 700, Band Pass LMR 750, Band Pass LMR 800, Band Pass USA 700, Band Pass USA 750, Band Pass EDD 800, Band Pass	LMR 900, Band Pass CEL 900, Band Pass

## Electrical Specifications, Band Pass

Frequency Range, MHz	694–862	880–960
Insertion Loss, typical, dB	0.2	0.2
Return Loss, typical, dB	22	22
Isolation, minimum, dB	50	50
Input Power, RMS, maximum, W	300	300
Input Power, PEP, maximum, W	3000	3000
3rd Order PIM, typical, dBc	-160	-160
3rd Order PIM Test Method	2 x 20 W CW tones	2 x 20 W CW tones

## Block Diagram



## Environmental Specifications

Operating Temperature	-40 °C to +65 °C (-40 °F to +149 °F)
Corrosion Test Method	IEC 60068-2-11, 30 days
Ingress Protection Test Method	IEC 60529:2001, IP67

# E14F06P45

---

## Packaging and Weights

Included	Mounting hardware
Volume	2.7 L
Weight, net	3.7 kg   8.157 lb
Weight, without mounting hardware	3.3 kg   7.275 lb

## Regulatory Compliance/Certifications

Agency	Classification
ISO 9001:2015	Designed, manufactured and/or distributed under this quality management system