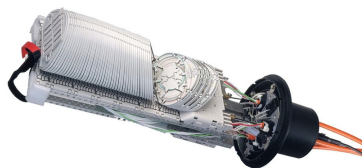


FIST-GCOG2-6-SERIES



FIST® GCOG2 Fiber Optic Splice Closure, Gel Cable sealing

The generic gel closure FIST-GCOG2 6-series is the environmentally sealed, fully mechanical enclosure for the fiber management system that provides the functions of splicing and passive component integration in the external network.

Key features for the FIST-GCOG2 6-series:

- Single-ended design
- Base and dome are sealed with a clamp and O-ring system
- 6 round cable ports are provided in a wrap-around block with pre-installed gel profile for cable sealing. This block can be opened and closed repeatedly without the need to remove or replace the gel
- The UMS (Universal Mounting System) profiles provide the foundation for mounting combinations of SOSA2 (Splice Only Sub-Assembly) and/or SASA2 (Splitter Array Sub-Assembly) modules, which consists of a modular grooveplate and trays
- Compatible with most common cable types: e.g. loose tube, central core, slotted core
- Uncut fibers can be stored as single circuits in trays and/or as cable elements in the storage space between the profiles. Storage baskets are available for mass storage of fibers of central core cable constructions
- The closure can be used as well in aerial, pedestal and underground (up to 5 meters) environment

Product Classification

Regional Availability	EMEA
Product Type	Single-ended, round fiber closure
Product Brand	FIST®
Product Series	FIST-GCOG2

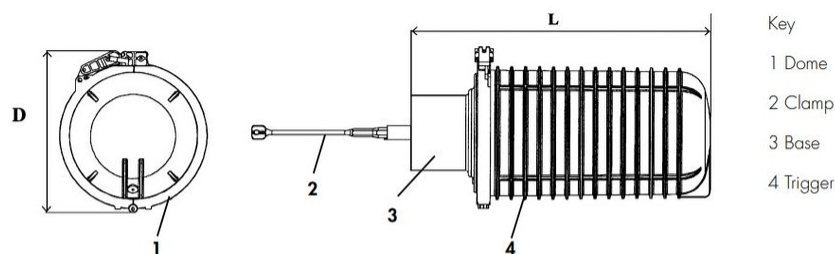
General Specifications

Cable Entry Drop Port Style	Round
Cable Entry Main Port Style	Oval
Cable Ports Quantity, total	6 round ports
Cable Sealing Type	Compressed gel
Closure Sealing Type	Dome-to-base clamp with O-ring
Closure Style	Single-ended
Color	Black
Mounting	Pole Strand Wall
Network Area Type	Distribution
Splice Tray Included, quantity	0

FIST-GCOG2-6-SERIES

Splice Tray Type Included	No trays
Splicing Type, Supported	Mass fusion Single fusion

Dimension Drawing

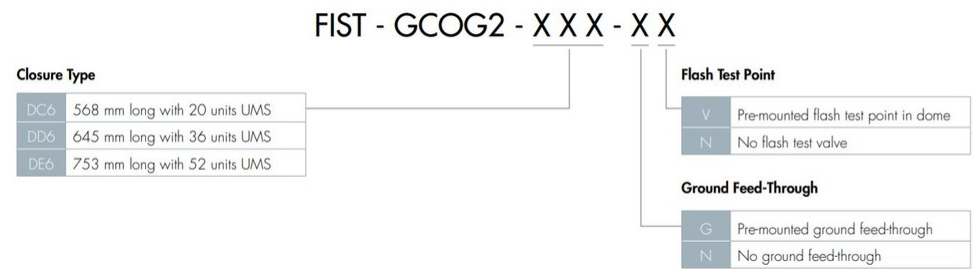


		GCOG2-DC6	GCOG2-DD6	GCOG2-DE6
Dimensions	L (excl. trigger)	568	645	753
	D	247	247	247
	D with clamp	291	291	291

Splicing Configuration

	GCOG2-DC6		GCOG2-DD6		GCOG2-DE6	
	Fibers	Trays	Fibers	Trays	Fibers	Trays
Single Circuit Splicing Capacity	80	40	144	72	208	104
Single Element Splicing Capacity	240	20	432	36	624	52
R4/R8 Splicing Capacity	160	20	288	36	416	52
R12 Splicing Capacity	144	12	288	24	384	32

Ordering Tree



Material Specifications

Material Type	Impact-resistant polymer
---------------	--------------------------

FIST-GCOG2-6-SERIES

Environmental Specifications

Environmental Space	Below ground Buried
Qualification Standards	IEC 61300, 5 m waterhead

Regulatory Compliance/Certifications

Agency	Classification
ISO 9001:2015	Designed, manufactured and/or distributed under this quality management system

