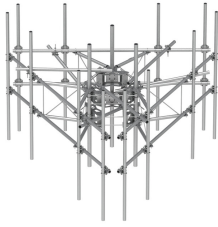


MCG23RHDX-14M1596



G23RHDX Monopole Sector Frame with spine extension for RRU Mounting, 14.5 ft x 2.88 in OD face pipes, includes fifteen 2.88 OD x 96 in antenna pipes

- Extended spine for MCG23 RHDX mounts that decrease PIM from radio relocation
- Increased versatility and stability
- Updated frame provides higher loading
- More RRU mounting available, reducing need for additional mounts
- Better load management
- Less structure stress
- Can be used in combination with APEX RRU mounts

Product Classification

| | |
|-----------------------|-------------------------------------|
| Product Type | High capacity monopole sector frame |
| Product Series | G2 |

General Specifications

| | |
|--------------------------|-------------------------------------|
| Mounting | Monopole, 381–1270 mm (15–50 in) OD |
| Pipe, quantity | 15 |
| Sectors, quantity | 3 |

Dimensions

| | |
|-------------------------------------|----------------------|
| Height | 2,438.4 mm 96 in |
| Face Width | 4.42 m 14.5 ft |
| Width | 4,419.6 mm 174 in |
| Pipe Length | 2,438.4 mm 96 in |
| Face Support Pipe Diameter | 73.025 mm 2.875 in |
| Mounting Diameter 2, maximum | in |
| Mounting Diameter, maximum | 1270 mm 50 in |
| Mounting Diameter, minimum | 381 mm 15 in |
| Pipe Outer Diameter | 73.025 mm 2.875 in |
| Stand-off Distance | 1,066.8 mm 42 in |

Material Specifications

| | |
|----------------------|--------------------------|
| Material Type | Hot dip galvanized steel |
|----------------------|--------------------------|

Mechanical Specifications

| | |
|--------------------|--|
| Wind Rating | For Specifications, please contact steelproducts@commscope.com or call 800-255-1479 |
|--------------------|--|

MCG23RHDX-14M1596

Wind Rating Test Method TIA/EIA-222

Packaging and Weights

Included Mounting hardware | Pipe mounts | Plain end pipes | Ring mounts (2) | Sector frames (3) | Stiff arm

Packaging quantity 1

* Footnotes

Wind Rating BWS—Base Wind Speed; FBC—Florida Building Code