

Storage Basket for FOSC 400 and 450 A and B Closures

1. General Product Information

When splicing a mid-span section of loose buffer tube, central core tube, or ribbon cable in a FOSC closure, the unspliced buffer tubes, bare fibers, or ribbons can be stored in the basket for added protection. The FOSC ACC basket can be installed in a FOSC 400 or 450 closure mounted open side up or open side down depending on local practice.

Note: Mounting the FOSC ACC basket open side up may diminish tray holding capacity by blocking space that could otherwise be used for splice trays.

2. Kit Components

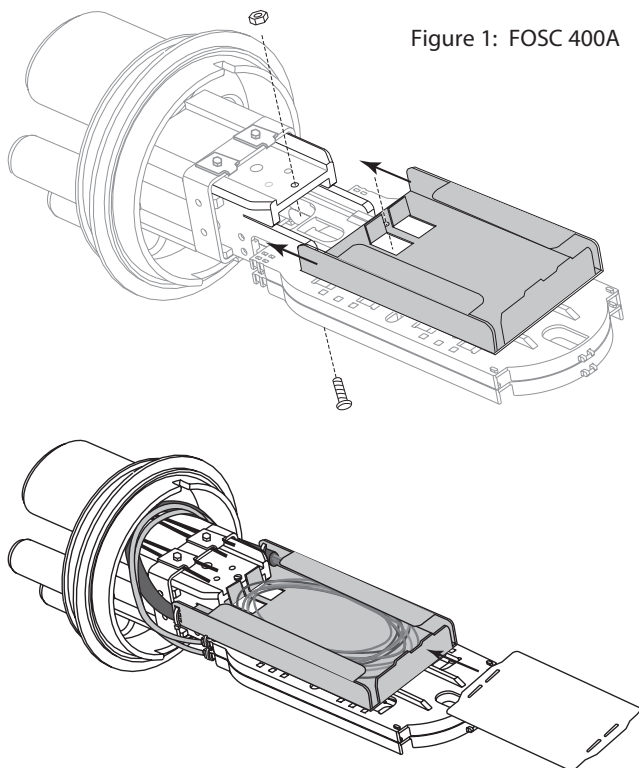
- Basket
- Tie wraps
- Installation Instructions
- Mounting hardware

3. Basket Installation Instructions:  
FOSC 400 A4, A8, B2, or B4 Closures

3.1 FOSC 400 A4 Closure

1. Insert the basket open side down in the slot in the tray holder bracket under the trays. The hole in the basket will align with the hole in the tray holder bracket. (Figure 1)
2. Insert the spacer between the metal basket and the black plastic tray holder bracket so that it aligns with the holes. Insert the screw from the top of the bracket (tray side) through the holes in the basket, spacer, and bracket, and secure the nut in place inside the basket. (Figure 1)

Figure 1: FOSC 400A



### 3.2 FOSC 400 A8 Closure

**Note:** If the basket is mounted open side up it occupies one tray position.

Insert two screws through the holes in the bottom of the basket, and through the two corresponding holes in tray bracket. Tighten screws completely down. (Figure 2)

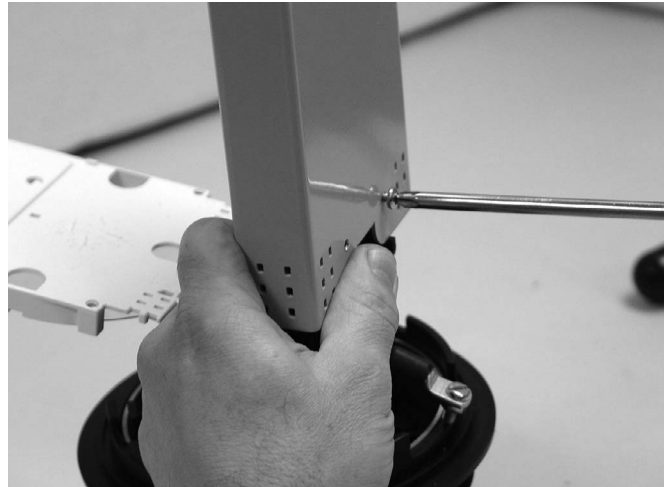


Figure 2: FOSC 400 A8

### 3.3 FOSC 400 B2/B4 Closures

1. Remove two screws that hold metal bracket to bottom of splice organizer tray.
2. Slide the basket open side down between the splice organizer tray and the black plastic bracket. Reinstall the metal bracket with two screws supplied in poly bag. (Figure 3)
3. For open side up installation, remove the two screws and metal bracket that hold down splice organizer tray.
4. Remove the two screws that hold the tray hinge to the base.
5. Install plate/stud assembly through the same holes, so that the studs protrude from the bottom of the base. Place nylon spacer over each stud.
6. Install the basket open side up over the studs and spacers, and attach the nuts.

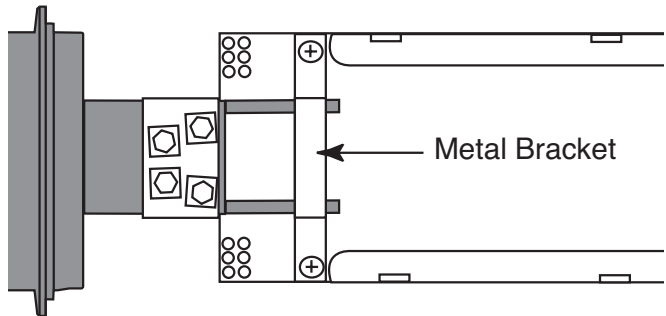


Figure 3: FOSC 400 B2 or B4

## 4. Basket Installation Instructions: FOSC 450 A4, BS, or B6 Closures

### 4.1 FOSC 450 A4 Closure Standard Basket

1. With the basket open side up align holes of basket with holes on tray bracket. Insert two screws through the holes in the bottom of the basket and through the corresponding holes in tray bracket. Tighten screws completely down. (Figure 4)

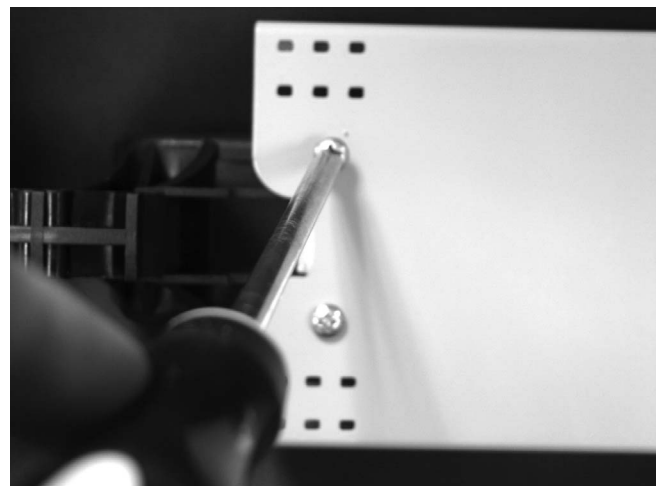


Figure 4: FOSC 450 A4, BS, or B6

## 4.2 FOSC 450 A4 Closure with Tall Basket

1. With basket position open side up insert the tab of the basket through the slot in the tray bracket. (Figure 5)
2. Insert two screws through the holes in the bottom of the basket and through the corresponding two holes in the tray bracket. Tighten screws completely down. (Figure 5)

**Note:** *If the basket is mounted open side up, the A4 standard basket occupies one tray position, and the A4 tall basket occupies two tray positions.*

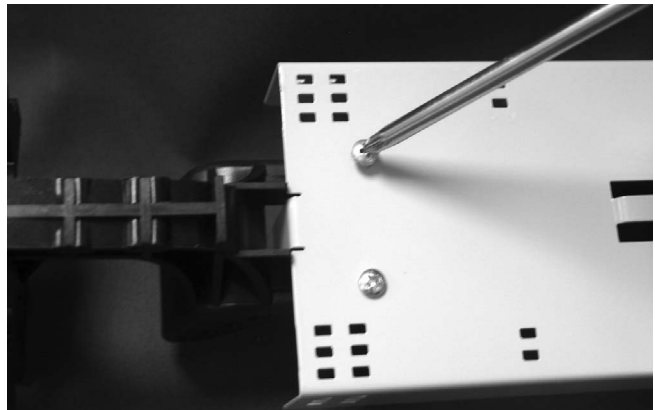
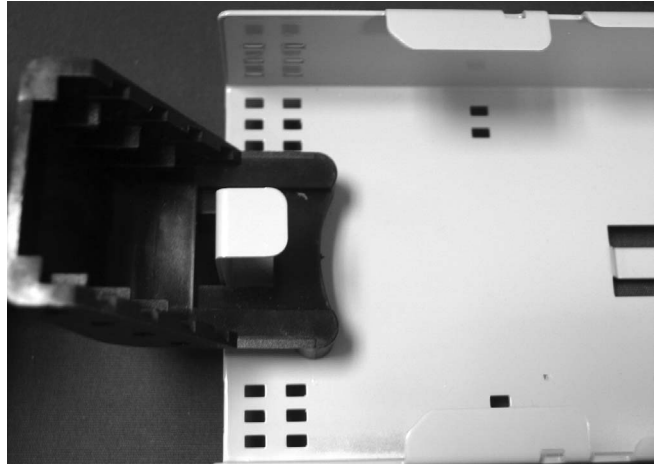


Figure 5: FOSC 450 A4 with Tall Basket

## 4.3 FOSC 450 BS Closure Basket

**Note:** *This process applies for either the tall or the standard basket in the FOSC 450 BS closure. The standard basket is shown in Figure 6.*

1. Insert basket mounting plate through two holes in the bottom of tray bracket. (Figure 6)
2. Place basket wedge, basket open side up, and fixture plate. (Figure 6)
3. Place nuts and secure completely down.

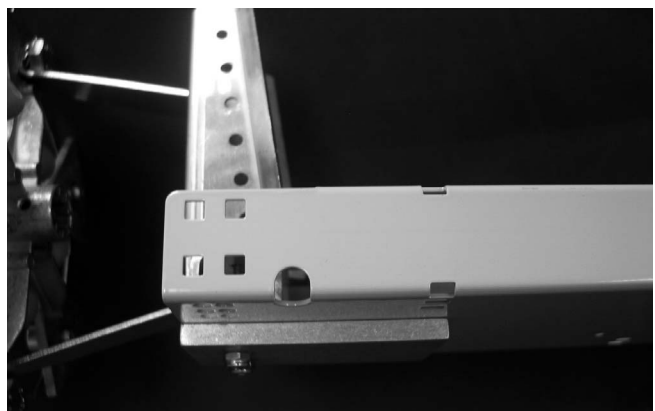
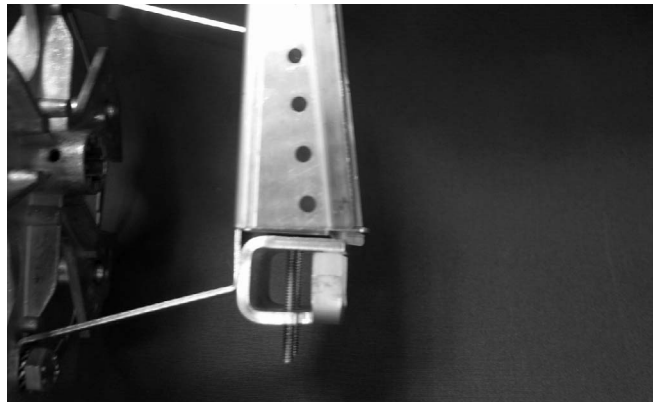


Figure 6: FOSC 450 BS Basket

#### 4.4 FOSC 450 B Closure, Old Style Tray Bracket

1. Slide basket wedge between black plastic tray bracket. The holes in the wedge should align with the hole in the tray holder bracket. Insert mounting plate through the holes in the tray bracket and wedge. (Figure 7)
2. Place basket open side up and fixture and secure into place. Place nuts and secure completely down. (Figure 7)

#### 4.5 FOSC 450 B Closure, New Style Tray Bracket

1. Slide basket open-side-up into the slot on the tray bracket. (Figure 8)
2. Align the two holes in the basket with the holes in the tray bracket. Insert the two supplied screws and tighten. (Figure 8a)

Note: The Tall basket occupies two tray positions.

Refer to fiber optic closure installation instructions for cable routing and tray installation.

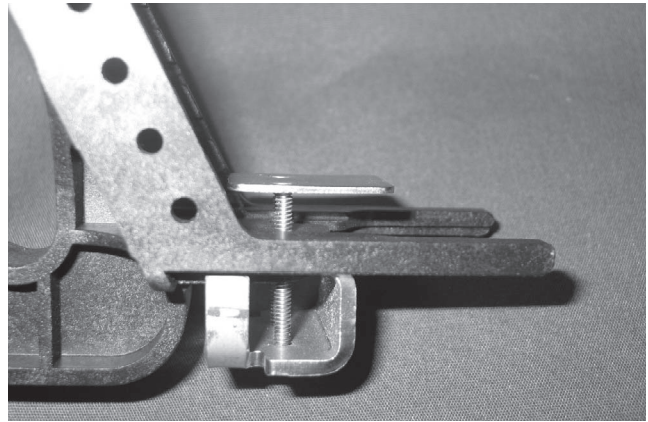


Figure 7: FOSC 450 B6 with Old Style Tray Bracket

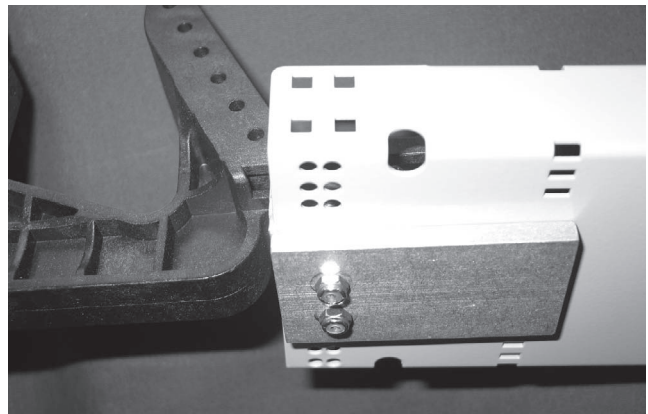


Figure 7a: Standard Basket Shown

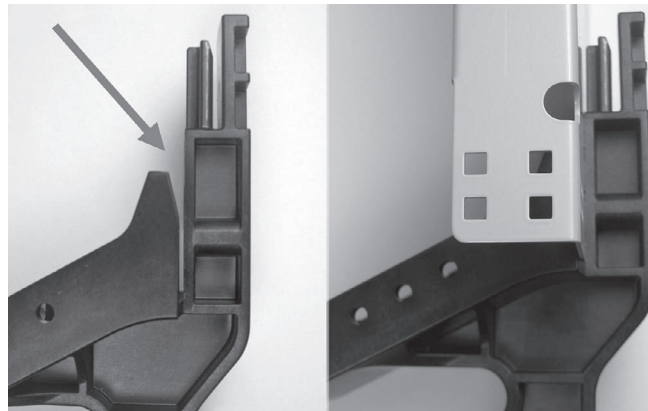


Figure 8: FOSC 450 B6 with New Style Tray Bracket

#### Technical Assistance Center (TAC)

Tel.: 800.830.5056

Email: TAC.Americas@commscope.com

www.commscope.com

FOSC 400, FOSC 450, CommScope, and the CommScope logo are trademarks.

The information given herein, including drawings, illustrations and schematics which are intended for illustration purposes only, is believed to be reliable. However, CommScope makes no warranties as to its accuracy or completeness and disclaims any liability in connection with its use. CommScope's obligations shall only be as set forth in CommScope's Standard Terms and Conditions of Sale for this product and in no case will CommScope be liable for any incidental, indirect or consequential damages arising out of the sale, resale, use or misuse of the product. Users of CommScope products should make their own evaluation to determine the suitability of each such product for the specific application.

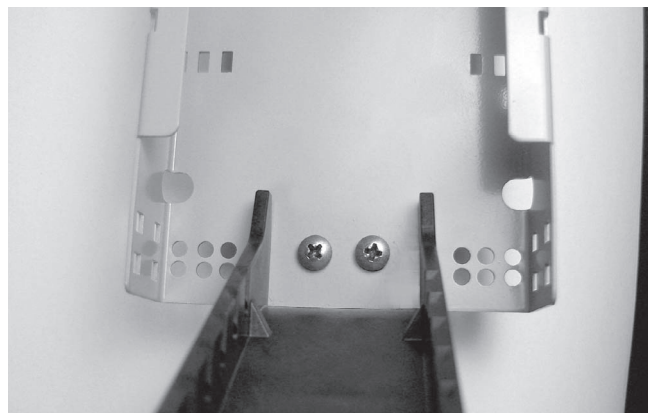


Figure 8a