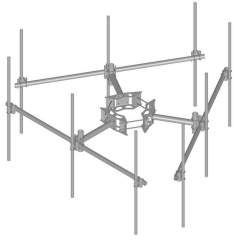


MC-K12M-9-96



Monopole Co-location T-Frame kit, 12 in to 50 in OD, 12 ft 6 in face, includes pipe

Product Classification

Product Type Monopole T-frame kit

General Specifications

Mounting Monopole, 304.8–1270 mm (12–50 in) OD
Pipe, quantity 9
Sectors, quantity 3

Dimensions

Height 2,438.4 mm | 96 in
Face Width 3.81 m | 12.5 ft
Width 3810 mm | 150 in
Length 914.4 mm | 36 in
Pipe Length 2,438.4 mm | 96 in
Mounting Diameter, maximum 1270 mm | 50 in
Mounting Diameter, minimum 304.8 mm | 12 in
Pipe Outer Diameter 60.96 mm | 2.4 in
Stand-off Distance 914.4 mm | 36 in
Mounting Circumference, maximum 3,990.34 mm | 157.1 in
Mounting Circumference, minimum 1,196.34 mm | 47.1 in

Material Specifications

Material Type Hot dip galvanized steel

Mechanical Specifications

Wind Rating 120 mph (BWS) at 150 ft AGL | 140 mph (3-second gust) at 150 ft AGL using Exposure D per FBC
Wind Rating Criteria Four 72 in x 8 in panel antennas per sector

MC-K12M-9-96

Wind Rating Test Method

TIA/EIA-222-G

Packaging and Weights

Included

Cellular pipe frames | Pipe mounts | Ring mount | Stand-off arms

Packaging quantity

1

Weight, net

542.088 kg | 1,195.1 lb

Regulatory Compliance/Certifications

Agency

ISO 9001:2015

Classification

Designed, manufactured and/or distributed under this quality management system



* Footnotes

Wind Rating

BWS—Base Wind Speed; FBC—Florida Building Code