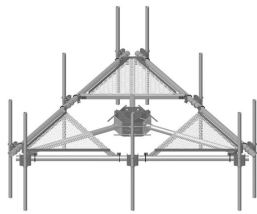


# MC-PK12S-12-96



Low-Profile Co-location Platform Kit, 12 ft face, 10 in to 30 in OD, includes pipe

## OBSOLETE

This product was discontinued on: August 18, 2022

### Replaced By:

MC-PK12M-12-96

Low-Profile Co-location Platform Kit, 12 ft face, 12 in to 50 in OD, includes twelve 96 in pipes

## Product Classification

**Product Type** Monopole platform kit

## General Specifications

**Mounting** Monopole, 254–762 mm (10–30 in) OD

**Pipe, quantity** 12

**Sectors, quantity** 3

## Dimensions

**Height** 2,438.4 mm | 96 in

**Face Width** 3.81 m | 12.5 ft

**Width** 3810 mm | 150 in

**Length** 914.4 mm | 36 in

**Pipe Length** 2,438.4 mm | 96 in

**Face Support Pipe Diameter** 88.9 mm | 3.5 in

**Mounting Diameter, maximum** 762 mm | 30 in

**Mounting Diameter, minimum** 254 mm | 10 in

**Pipe Outer Diameter** 60.325 mm | 2.375 in

**Mounting Circumference, maximum** 2,392.68 mm | 94.2 in

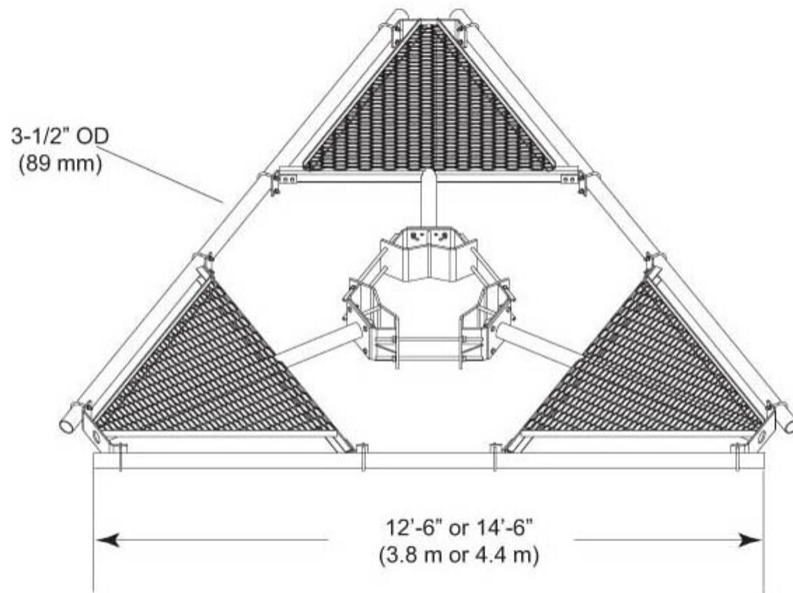
# MC-PK12S-12-96

---

**Mounting Circumference, minimum**      797.56 mm | 31.4 in

# MC-PK12S-12-96

## Outline Drawing



## Material Specifications

**Material Type** Hot dip galvanized steel

## Mechanical Specifications

**Wind Rating** 120 mph (BWS) at 150 ft AGL | 140 mph (3-second gust) at 150 ft AGL using Exposure D per FBC

**Wind Rating Criteria** Four 72 in x 8 in panel antennas per sector

**Wind Rating Test Method** TIA/EIA-222

## Packaging and Weights

**Included** Pipe mounts | Platform | Ring mount

**Packaging quantity** 1

**Weight, net** 731.599 kg | 1,612.9 lb

## Regulatory Compliance/Certifications

Agency	Classification
ISO 9001:2015	Designed, manufactured and/or distributed under this quality management system

# MC-PK12S-12-96

---

## Included Products

- MC-PK12S-B – Low-Profile Co-location Platform Kit, 12 ft face, 10 in to 30 in OD, pipe ordered separately
- MT-219-H – Pipe Mount Kit - 2-3/8" TO 3-1/2" PIPE - pipe not included
- MT-651-96 – Plain End Pipe, 2-3/8 in OD x 96 in .120" A500C 46Ksi

## \* Footnotes

### Wind Rating

BWS—Base Wind Speed; FBC—Florida Building Code