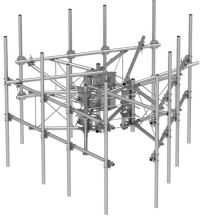


MCG23HDX-10M-9-126



G23HDX High Capacity 3-Sector Monopole Frame, 10.5 ft 2.88 in OD face pipes, includes nine 2.88 OD 126 in pipes; For patents, see www.cs-pat.com.

OBSOLETE

This product was discontinued on: July 29, 2022

Replaced By:

MCG23HDX-10M9120 G23HDX High Capacity 3-Sector Monopole Sector Frame, 10.5 ft x 2.88 in OD face pipes, includes nine 2.88 OD x 120 in pipes

Product Classification

Product Type High capacity monopole sector frame

General Specifications

Mounting Monopole, 381–1270 mm (15–50 in) OD

Pipe, quantity 9

Sectors, quantity 3

Dimensions

Height 3,200.4 mm | 126 in

Face Width 3.2 m | 10.5 ft

Width 3,200.4 mm | 126 in

Pipe Length 3,200.4 mm | 126 in

Face Support Pipe Diameter 73.025 mm | 2.875 in

Mounting Diameter, maximum 1270 mm | 50 in

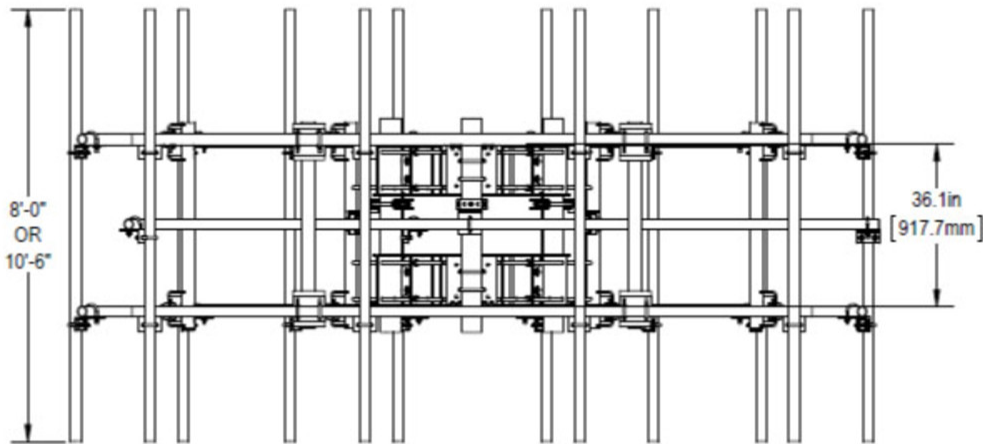
Mounting Diameter, minimum 381 mm | 15 in

Pipe Outer Diameter 73.025 mm | 2.875 in

Stand-off Distance 1,165.86 mm | 45.9 in

Outline Drawing

MCG23HDX-10M-9-126



Material Specifications

Material Type Hot dip galvanized steel

Mechanical Specifications

Wind Rating For Specifications, please contact your local ANDREW representative

Wind Rating Test Method TIA/EIA-222

Packaging and Weights

Included Pipe mounts | Plain end pipes (9) | Ring mounts (2) | Sector frames (3) | Stiff arm

Packaging quantity 1

Weight, net 1,199.525 kg | 2,644.5 lb

Regulatory Compliance/Certifications

Agency	Classification
ISO 9001:2015	Designed, manufactured and/or distributed under this quality management system

* Footnotes

Wind Rating BWS—Base Wind Speed; FBC—Florida Building Code