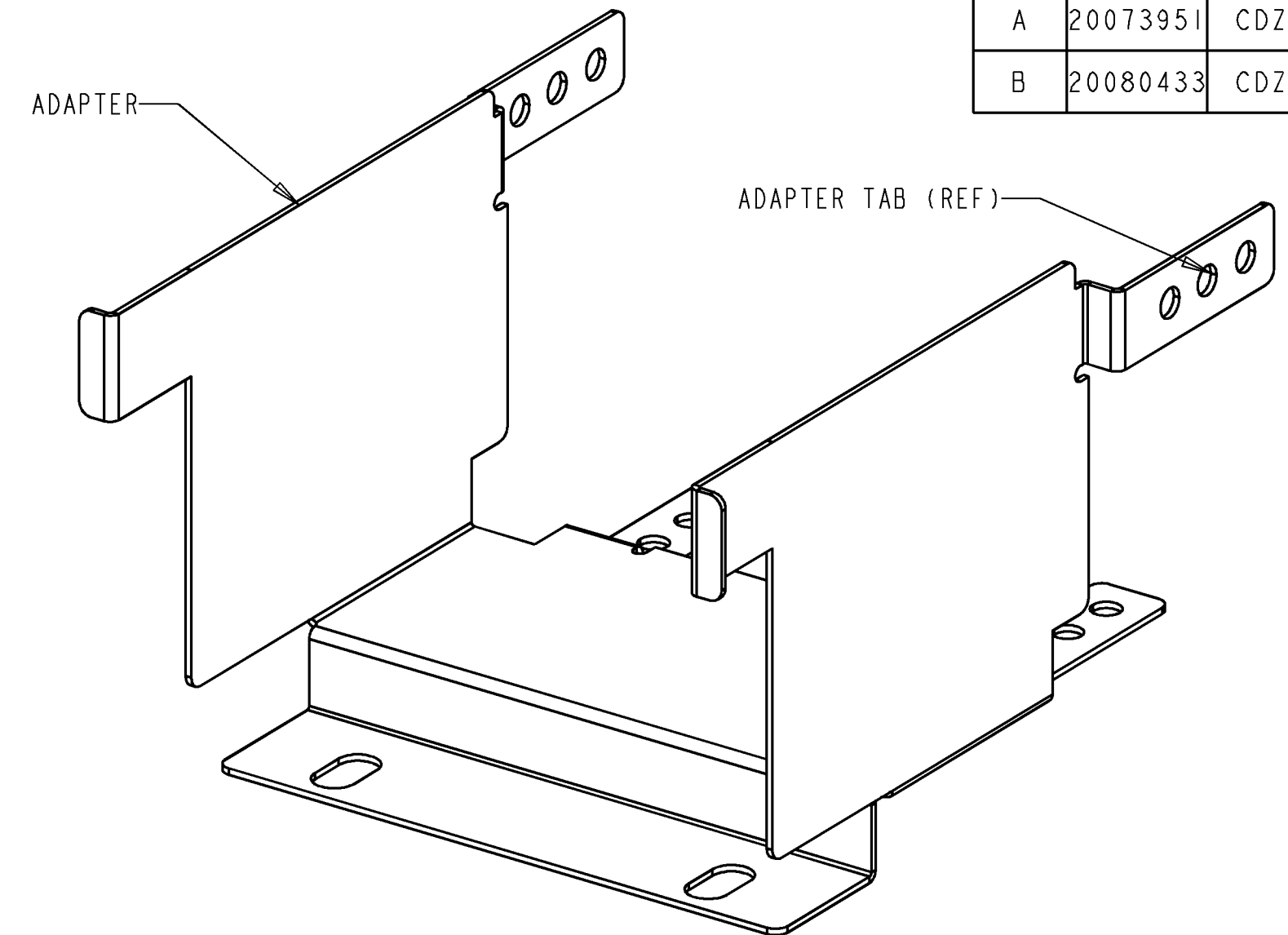
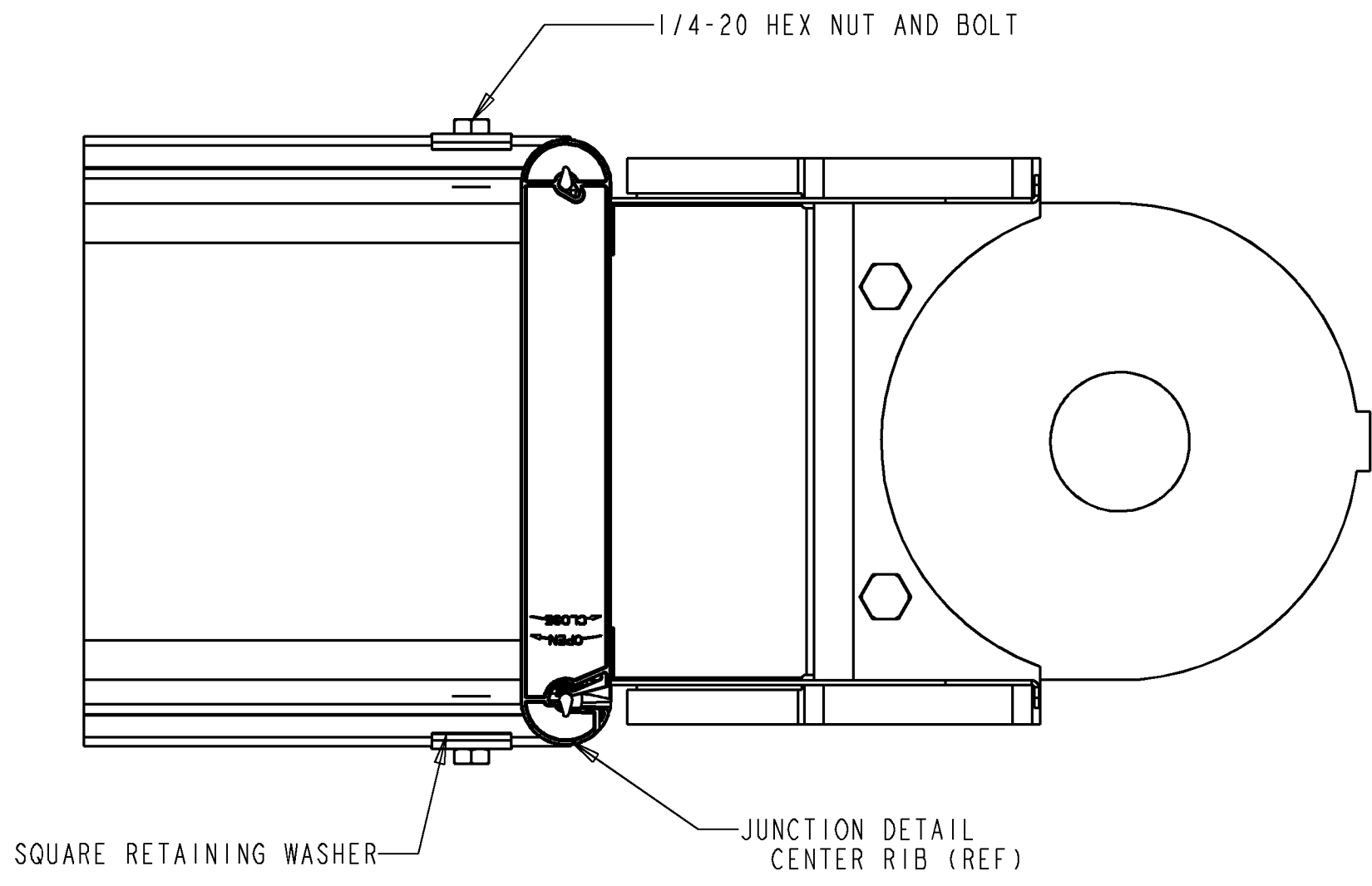
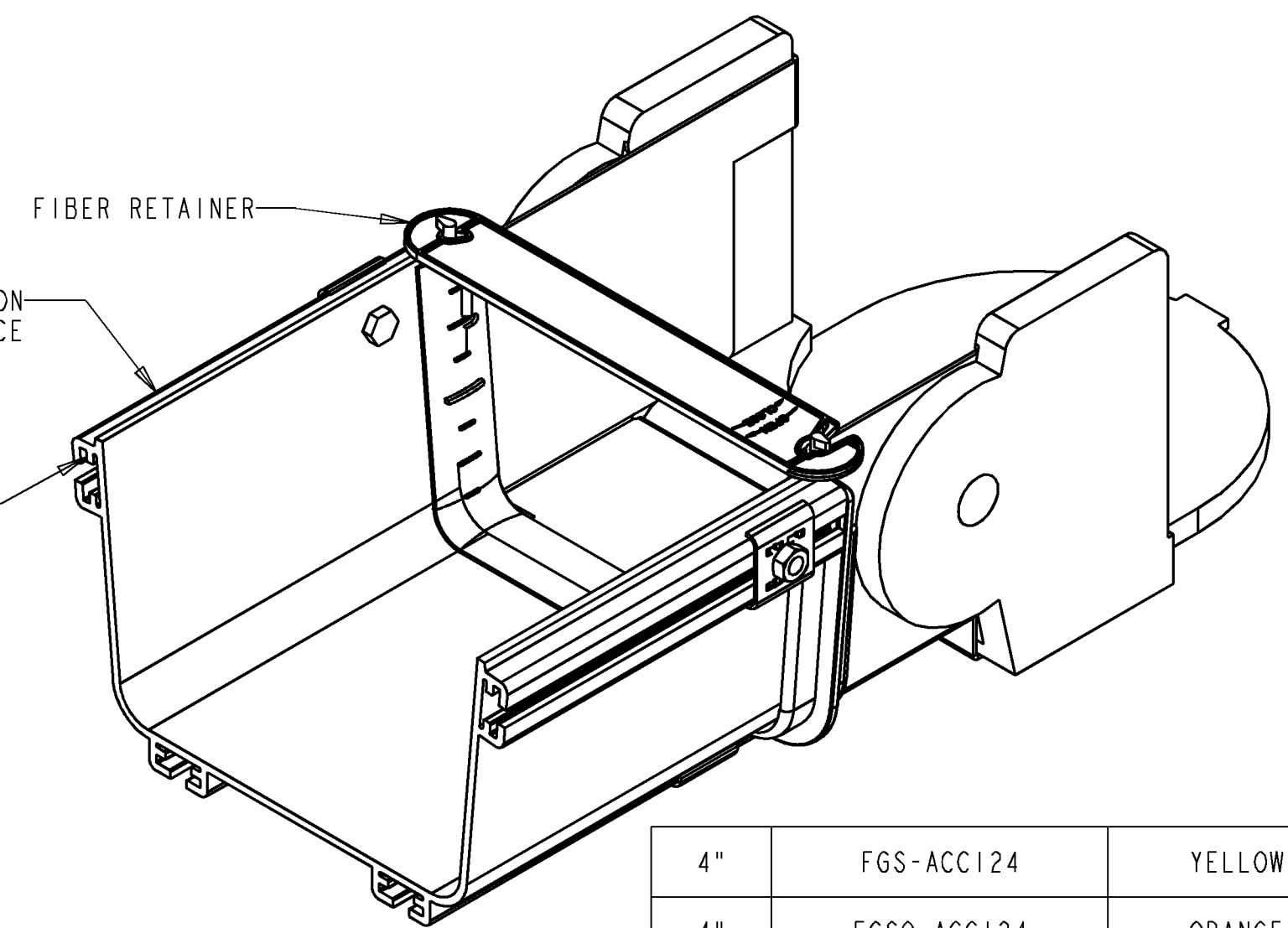
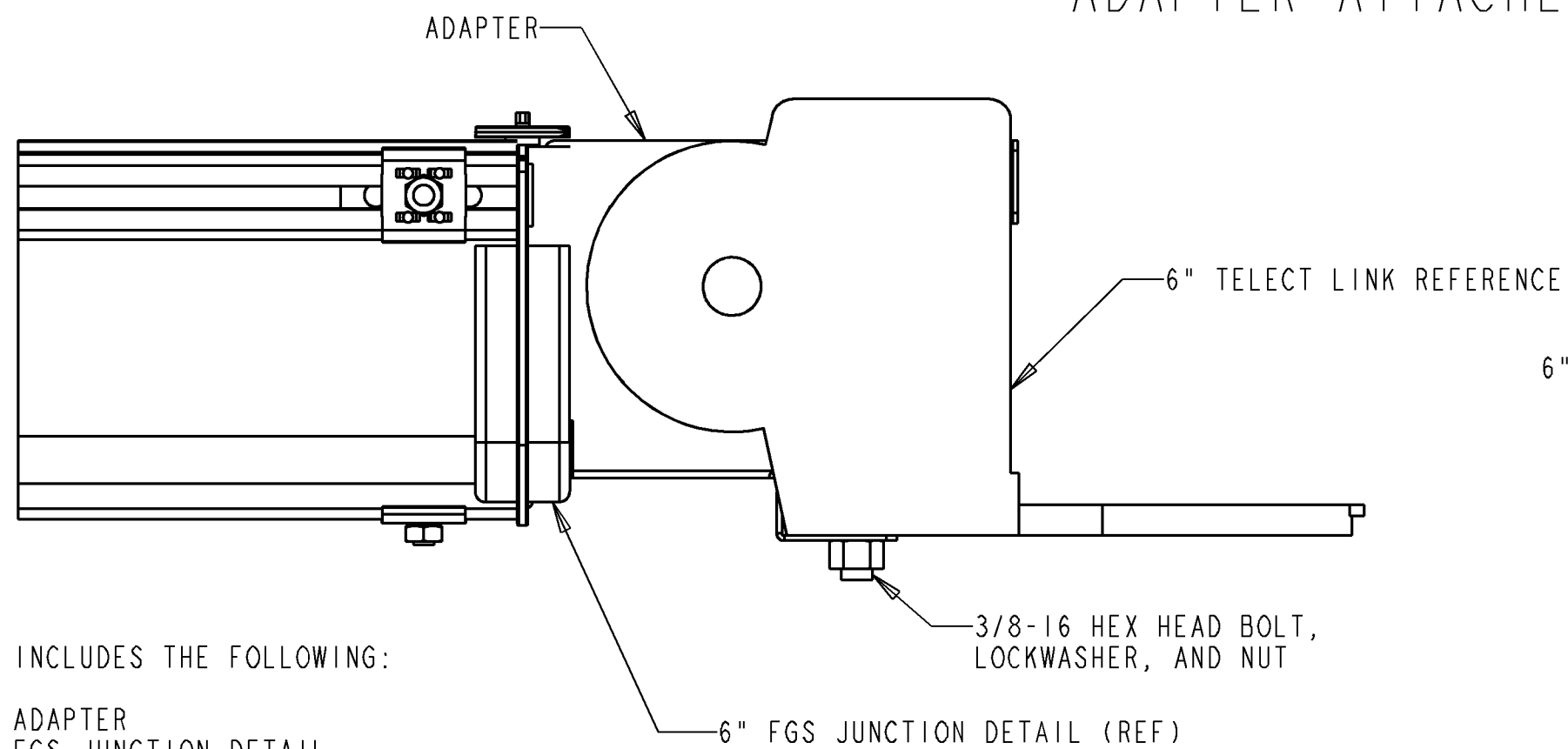


REV	ECO	DWN	DATE
A	20073951	CDZ	10-NOV-00
B	20080433	CDZ	24-JAN-01



ADAPTER ATTACHED TO FIBERGUIDE STRAIGHT SECTION  
(6" SHOWN FOR REFERENCE)



NOTES:

1. KIT INCLUDES THE FOLLOWING:

- (1) ADAPTER
- (1) FGS JUNCTION DETAIL
- (1) FIBER RETAINER STRAP, BLACK
- (4) 1/4-20 BOLT
- (4) 1/4-20 NUT
- (4) SQUARE RETAINING WASHER
- (4) 1/4 SPLITLOCK WASHER
- (4) 1/4 FLAT WASHER
- (2) 3/8-16 BOLT
- (2) 3/8-16 NUT
- (2) 3/8 SPLITLOCK WASHER

ATTACHING THE ADAPTER TO THE TELECT LINK:

2. MATE THE ADAPTER TO THE TELECT LINK COMPONENT AS SHOWN. SIDES OF ADAPTER WILL NEED TO BE SQUEEZED INWARD SLIGHTLY.
3. INSERT (2) 3/8-16 HEX HEAD BOLTS INTO THE BOLT HOLES IN THE TELECT PART, ENSURING THAT THE BOLTS PROTRUDE THROUGH THE SLOTS IN THE ADAPTER.
4. ASSEMBLE (2) SPLITLOCK WASHER AND (2) 3/8-16 HEX NUT TO THE (2) ASSEMBLED BOLTS.
5. ENSURE ADAPTER IS CLOSELY MATED TO THE TELECT COMPONENT, AND TIGHTEN (2) 3/8-16 HEX NUTS COMPLETELY.

ATTACHING THE ADAPTER TO A FIBERGUIDE STRAIGHT SECTION:

6. FULLY INSERT TABS ON ADAPTER INTO TAB SLOTS IN JUNCTION DETAIL. ENSURE THAT CENTER RIB ON JUNCTION DETAIL IS MATED FLUSH WITH 90 DEGREE BEND ON ADAPTER TABS.
7. INSERT (4) 1/4-20 HEX HEAD BOLT INTO THE CENTER HOLE IN EACH OF THE TABS ON THE ADAPTER. ENSURE THAT BOLT HEADS ARE ON THE INSIDE OF THE TABS.
8. INSERT TABS WITH SCREWS INTO THE OUTER T-CHANNEL ON THE FGS STRAIGHT SECTION. ENSURE FGS STRAIGHT SECTION IS FULLY INSERTED INTO JUNCTION DETAIL.
9. ASSEMBLE (4) SQUARE RETAINING WASHERS AND (4) 1/4-20 HEX NUTS ONTO (4) 1/4-20 HEX HEAD CAP SCREWS INSERTED IN THE TABS. TIGHTEN ALL HARDWARE COMPLETELY.
10. ATTACH BLACK FIBER RETAINER STRAP AS SHOWN.

4"	FGS-ACC124	YELLOW
4"	FGSO-ACC124	ORANGE
6"	FGS-ACC123	YELLOW
6"	FGSO-ACC123	ORANGE
SIZE	ADC CATALOG NUMBER	FGS COLOR



INFORMATION ON THIS DOCUMENT IS PROPRIETARY TO ADC AND SHALL NOT BE USED, COPIED, REPRODUCED OR DISCLOSED IN WHOLE OR IN PART WITHOUT WRITTEN CONSENT OF ADC.

TOLERANCE UNLESS OTHERWISE SPECIFIED: .XX: ±.02  
.XXX: ±.010  
ANGULAR: ±2°

THIRD ANGLE PROJECTION  
DO NOT SCALE DRAWING

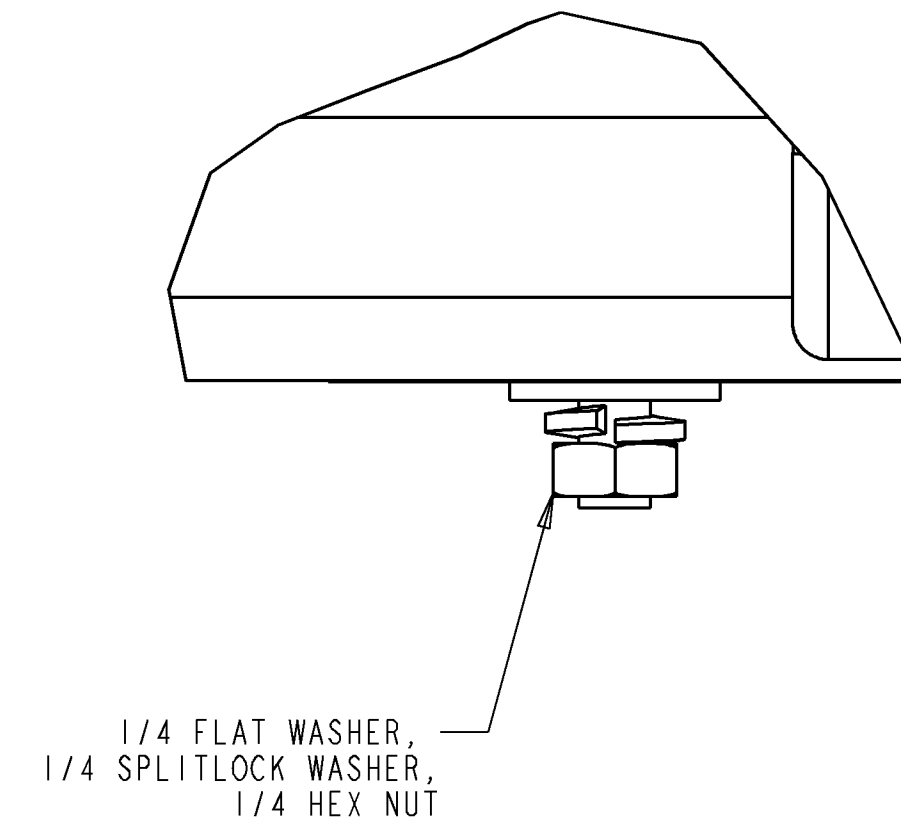
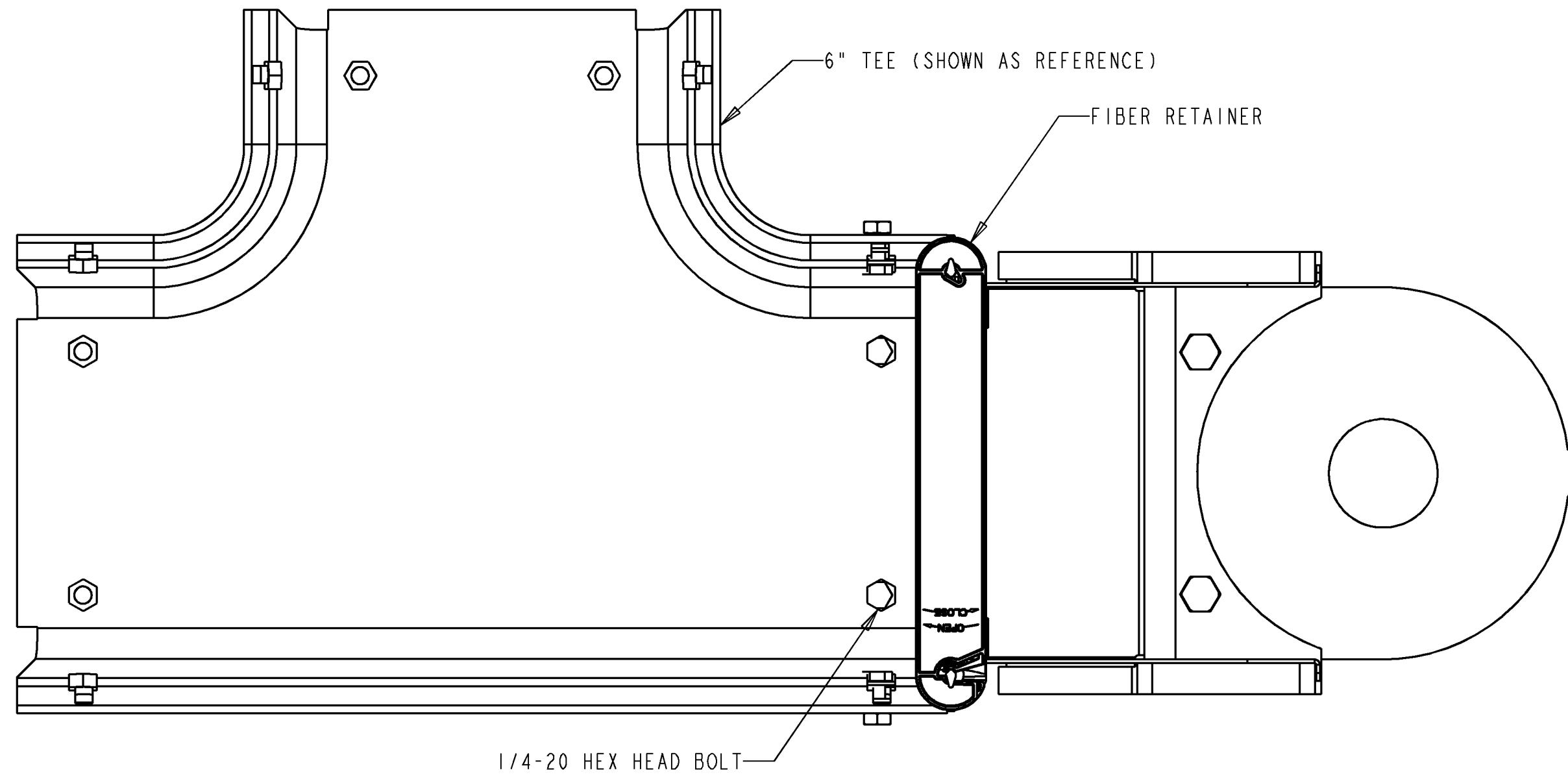
TITLE  
FGS TO TELECT ADAPTER

DRAWING NUMBER  
1139484

ENGR: KEVIN HRUBY  
DWN: CRAIG ZELASKO

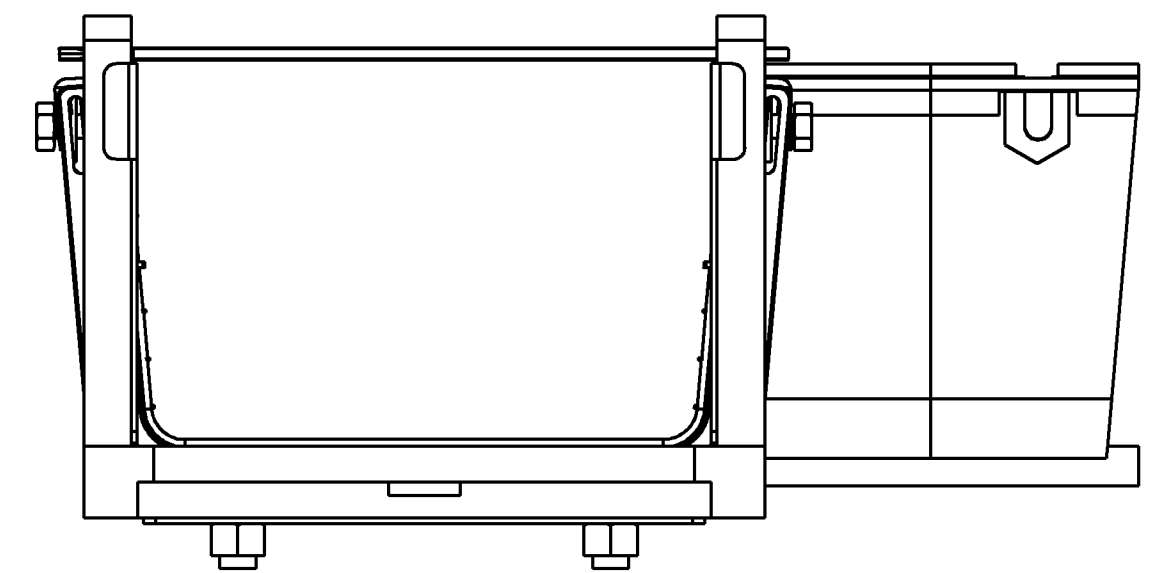
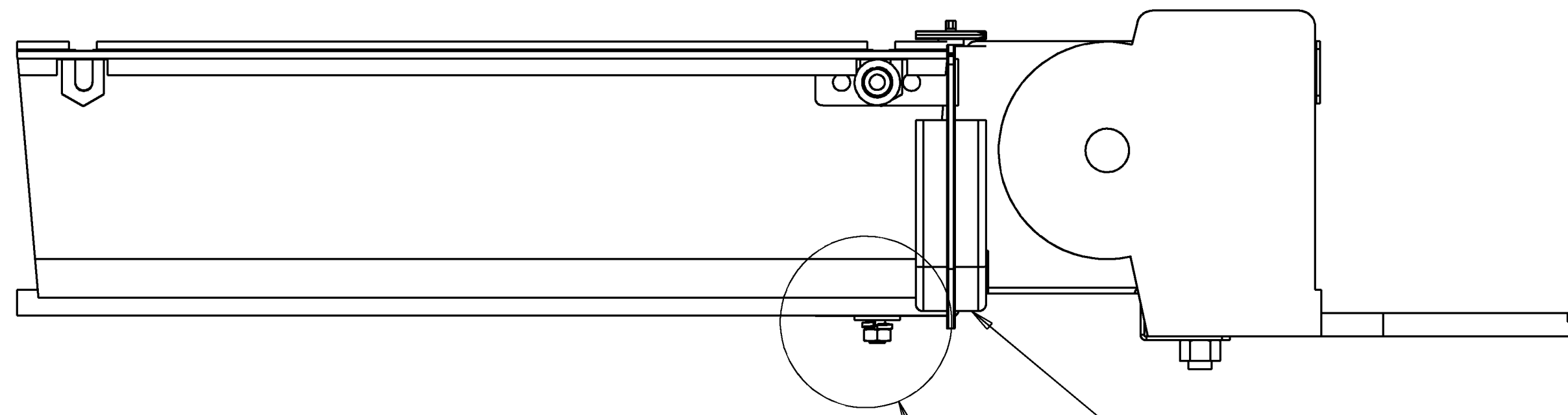
SHT. 1 OF 2

REV	ECO	DWN	DATE



DETAIL A  
SCALE 1.500

ADAPTER ATTACHED TO FIBERGUIDE FITTING  
(6" SHOWN FOR REFERENCE)



ATTACHING THE ADAPTER TO A FIBERGUIDE FITTING:

11. FULLY INSERT TABS ON ADAPTER INTO TAB SLOTS IN JUNCTION DETAIL. ENSURE THAT CENTER RIB ON JUNCTION DETAIL IS MATED FLUSH WITH 90 DEGREE BEND ON ADAPTER TABS.
12. ASSEMBLE THE ADAPTER TO THE FIBERGUIDE FITTING AS SHOWN. ENSURE FITTING IS FULLY INSERTED INTO JUNCTION DETAIL, AND CENTER HOLES IN ADAPTER TABS ARE ALIGNED WITH HOLES IN FITTING.
13. INSERT (4) 1/4-20 HEX HEAD BOLT INTO SOCKET HOLE IN FITTING, WITH BOLT THREADS PROTRUDING THROUGH CENTER HOLE IN ADAPTER TAB.
14. ASSEMBLE (4) 1/4 FLAT WASHER, THEN 1/4 SPLITLOCK WASHER ONTO BOLT THREADS. THEN ASSEMBLE 1/4-20 HEX NUT ONTO THREADS, AND TIGHTEN COMPLETELY.

6" FGS JUNCTION DETAIL (REF)

SEE DETAIL A



INFORMATION ON THIS DOCUMENT IS PROPRIETARY TO ADC AND SHALL NOT BE USED, COPIED, REPRODUCED OR DISCLOSED IN WHOLE OR IN PART WITHOUT WRITTEN CONSENT OF ADC.		TITLE FGS TO TELECT ADAPTER	
TOLERANCE UNLESS OTHERWISE SPECIFIED .XX:±N/A .XXX:±N/A ANGULAR:±N/A	C SIZE	DRAWING NUMBER 1139484	B REV
THIRD ANGLE PROJECTION DO NOT SCALE DRAWING	ENGR: KEVIN HRUBY DWN: CRAIG ZELASKO	SHT. 2 OF 2	